

THIS DRAWING IS UNPUBLISHED.

RELEASED FOR PUBLICATION

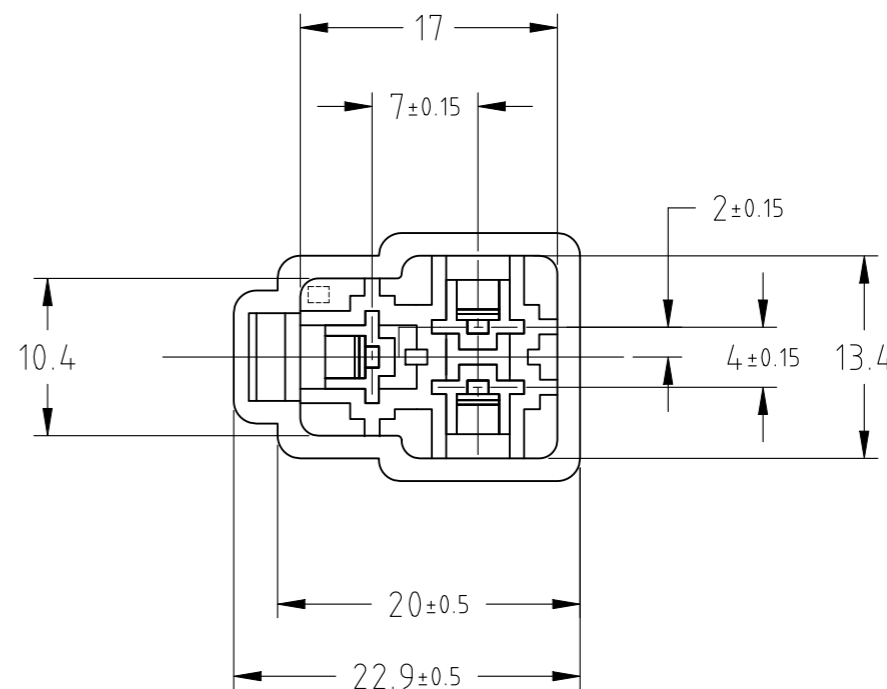
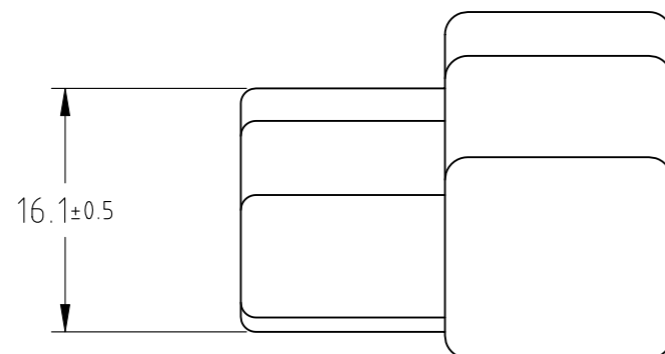
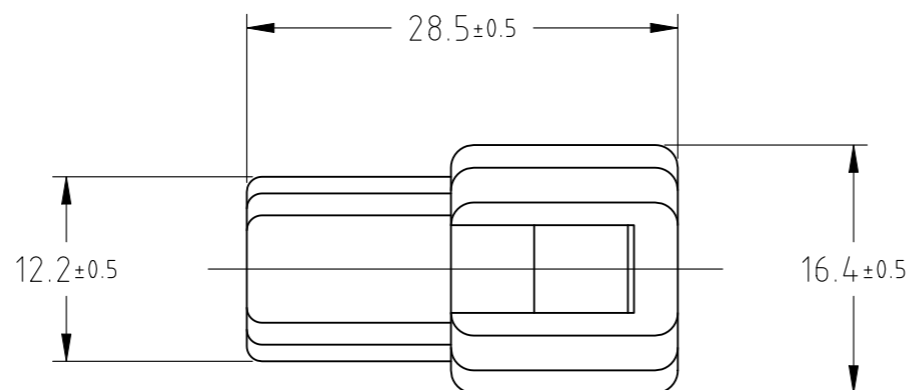
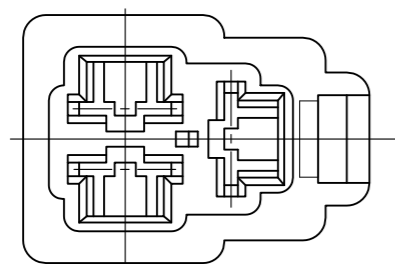
© COPYRIGHT - By -

ALL RIGHTS RESERVED.

REVISIONS

変更

P	LTR	DESCRIPTION	DATE	DWN	APVD
	E7	REVISED PER ECR-23-171872	11APR2023	SS	RE



Material	Color	Part Number
△4	BLUE	2-172131-5
△4	NATURAL	2-172131-1
△5	OBSOLETE	↑ LIGHT GRAY 6-172131-6
	OBSOLETE	↑ RED -9
△5	OBSOLETE	ORANGE -8
	OBSOLETE	YELLOW -7
		GRAY -6
		BLUE -5
		GREEN -4
△5	OBSOLETE	BROWN -3
		BLACK -2
OBSOLETE	△3 NATURAL	172131-1
	材料 MATERIAL	色調 COLOR
		型番 PART NUMBER

注記

- 1. かん合する相手ハウジングは型番172132
- 2. 使用端子は型番170340,170341,170349
- △3 材料: 6/6ナイロン (UL94V-2)
- △4 材料: 6/6ナイロン (UL94V-0)

NOTES

- 1. THE MATING PLUG HOUSING P/N : 172132
- 2. APPLIED CONTACT P/N : 170340,170341,170349
- △3 MATERIAL : 6/6NYLON (UL94V-2)
- △4 MATERIAL : 6/6NYLON (UL94V-0)
- △5 OBSOLETE PARTS: OBSOLETE CIS STREAMLINING PER D.RENAUD/D.SINISI

THIS DRAWING IS A CONTROLLED DOCUMENT.		DWN J.SATO 14OCT2008	TE Connectivity													
		CHK S.MANABE 14OCT2008														
		APVD S.MANABE 14OCT2008	NAME 250 SERIES HOUSING LANCE CONNECTOR 3POS CAP HOUSING													
DIMENSIONS: 単位: 耗 mm		PRODUCT SPEC 製品規格	SIZE A3	CAGE CODE 00779												
TOLERANCES UNLESS OTHERWISE SPECIFIED: 一般公差		APPLICATION SPEC 取付適用規格	DRAWING NO C-172131	RESTRICTED TO												
<table border="1"> <tr><td>0 PLC</td><td>± 0.2</td></tr> <tr><td>1 PLC</td><td>± 0.25</td></tr> <tr><td>2 PLC</td><td>± 0.3</td></tr> <tr><td>3 PLC</td><td>±</td></tr> <tr><td>4 PLC</td><td>±</td></tr> <tr><td>ANGLES</td><td>± 3°</td></tr> </table>		0 PLC	± 0.2	1 PLC	± 0.25	2 PLC	± 0.3	3 PLC	±	4 PLC	±	ANGLES	± 3°	WEIGHT	SCALE 尺度 2:1	SHEET 1 OF 1
0 PLC	± 0.2															
1 PLC	± 0.25															
2 PLC	± 0.3															
3 PLC	±															
4 PLC	±															
ANGLES	± 3°															
MATERIAL 材料 SEE NOTE		FINISH 仕上	REV E7													
		CUSTOMER DRAWING														