

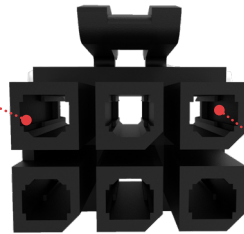
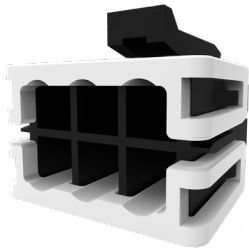
# Micro-Fit+ Connector

# molex

The Micro-Fit+ connector is a wire-to-board system which offers a 3.00mm pitch, a higher-current rating of 12.5A and superior design options for flexibility and efficient assembly

## Features and Advantages

**Fully isolated contacts on each side of the interface**  
Prevents potential arcing



**Unique keying design**  
Prevents mis-mating; different than standard Micro-Fit 3.0

**Reduced Mating Force by 40%**

Allows for ease of work, reducing operator fatigue during assembly with its unique design compared to standard Micro-Fit 3.0

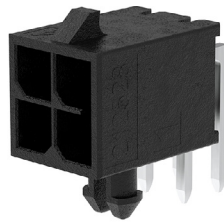
# 40%



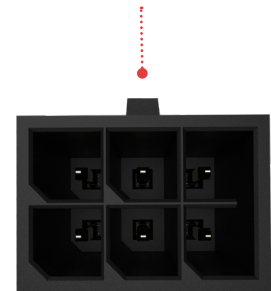
**Fully polarized housings**

Assures proper mating orientation; not compatible with standard Micro-Fit 3.0 Connectors

**Enhanced TPA design**  
Provides stability and security for the terminals inside the receptacle; offers easy assembly for operators



**Reflow options available**  
Reduces labor costs, saves time and resources



**Smaller PCB footprint**  
Provides design flexibility

**V-0/Glow Wire combination resin**  
Reduces the cost of materials and labor and allows customers to meet the European standard for electrical requirements

## Applications

### Consumer

- Washers and dryers
- Freezers
- Gaming machines
- Printers
- Refrigerators
- Scanners
- Security systems
- Vending machines
- White goods

### Medical

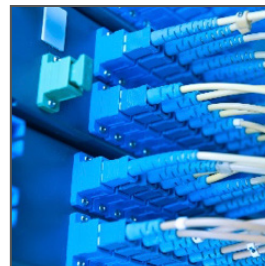
- Diagnostic equipment
- Patient monitors

### Sustainable Energy

- Solar power

### Automotive

- Harness manufacturers
- Non-sealed applications
- Inside devices
- Charging stations



Routers



Appliances

### Telecommunications/Networking

- Routers and switches
- Servers
- Storage



Charging Stations

## Specifications

### REFERENCE INFORMATION

Packaging: Bag, Tray, Reel  
 UL File No.: E29179  
 CSA File No.: LR19980  
 Mates With:  
     Series: 206832 Series: 206461  
 Use With:  
     Series: 206460 Series: 206461  
     Series: 206461 Series: 206462  
 Terminal Used:  
     Series: 206460  
 Designed In: Millimeters  
 RoHS: Yes  
 Halogen Free: Yes  
 Glow Wire Capable: Yes

### ELECTRICAL

Voltage (max.): 600V AC (RMS) or DC  
 Current (max.): 12.5A  
 Contact Resistance: 10 milliohms Maximum  
 Dielectric Withstanding Voltage: No breakdown;  
 current leakage < 5mA  
 Insulation Resistance: 1000 Megohms Minimum

### MECHANICAL

Pitch: 3.00mm  
 Contact Insertion Force: 14.7N (3.3 lbf)  
     Maximum insertion force  
 Contact Retention to Housing: 24.5N  
 Insertion Force to PCB: 13.7N (3.1 lbf)  
     Minimum retention force  
 Mating Force: 8N per circuit  
 Unmating Force: 3.7N per circuit  
 Durability (min.): Mate connectors up to 25 cycles  
     at a maximum rate of 10 cycles per minute.

### PHYSICAL

Housing: Glass Filled Liquid Crystal Polymer  
 Contact: High Copper Alloy  
 Plating: Gold(Au) or Tin(Sn) over Nickel overall  
 PCB Thickness: Standard 1.57mm  
 Operating Temperature: -40 to +105°C

## Ordering Information

### TERMINALS

Series	Description	AWG
<a href="#">206460</a>	Female Crimp Terminal	16, 18, 20 to 24, 26 to 30

### RECEPTACLES

Series	Description	Circuit
<a href="#">206461</a>	Receptacle Housing	2 to 24

### HEADERS

Series No.	Description	Orientation	Circuit	Plating
<a href="#">206832</a>	Header Housing	Vertical	2 to 24	Gold(Au) or Tin(Sn) over Nickel overall

### TPA

Series	Description	Circuit
<a href="#">206462</a>	TPA	2 to 24

[www.molex.com/link/microfitplus.html](http://www.molex.com/link/microfitplus.html)