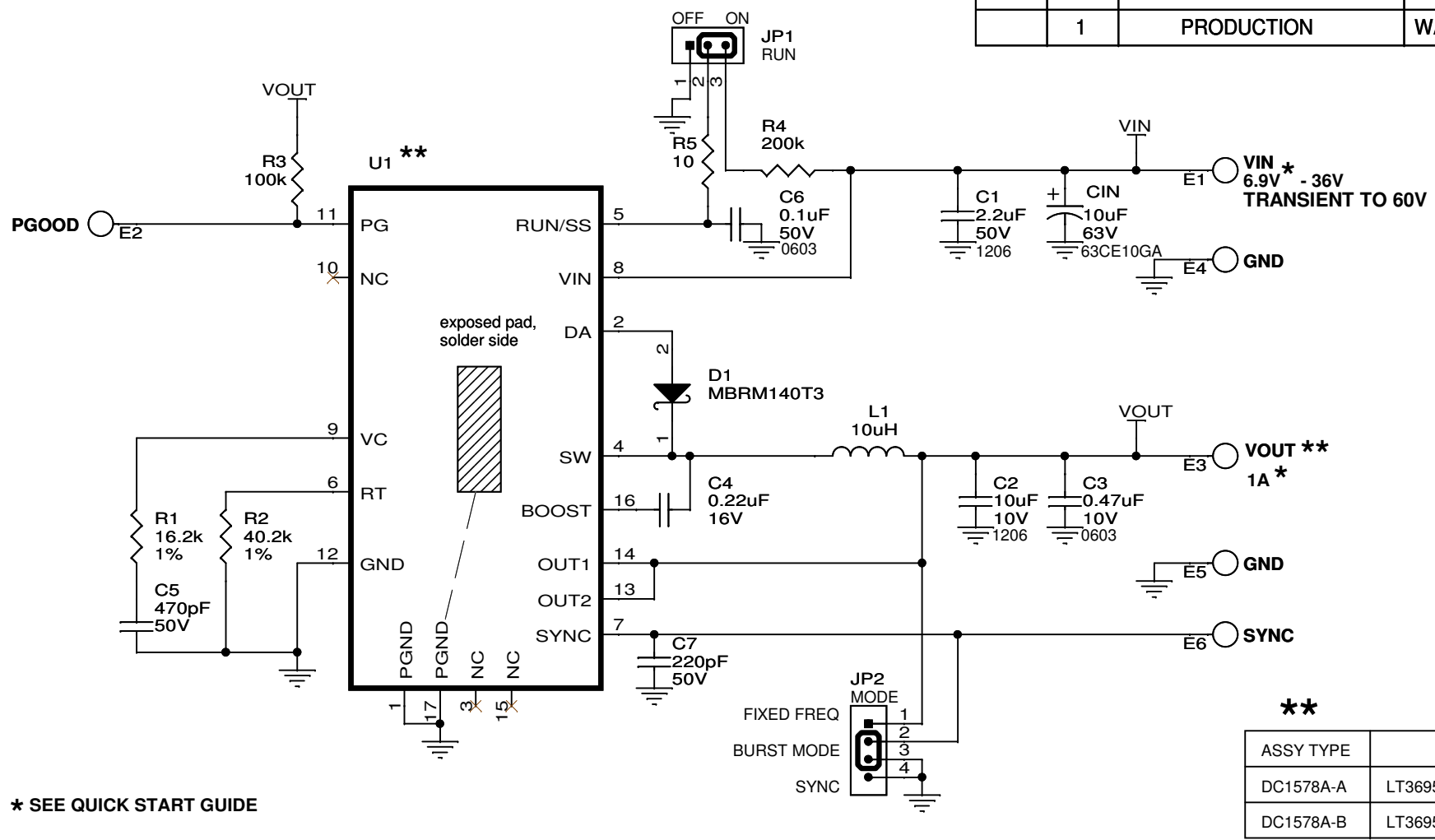


REVISION HISTORY				
ECO	REV	DESCRIPTION	APPROVED	DATE
	1	PRODUCTION	WALKER B.	03-29-10



\* SEE QUICK START GUIDE

**		
ASSY TYPE	U1	VOUT
DC1578A-A	LT3695EMSE-3.3	3.3V
DC1578A-B	LT3695EMSE-5	5V

**CUSTOMER NOTICE**

LINEAR TECHNOLOGY HAS MADE A BEST EFFORT TO DESIGN A CIRCUIT THAT MEETS CUSTOMER-SUPPLIED SPECIFICATIONS; HOWEVER, IT REMAINS THE CUSTOMER'S RESPONSIBILITY TO VERIFY PROPER AND RELIABLE OPERATION IN THE ACTUAL APPLICATION. COMPONENT SUBSTITUTION AND PRINTED CIRCUIT BOARD LAYOUT MAY SIGNIFICANTLY AFFECT CIRCUIT PERFORMANCE OR RELIABILITY. CONTACT LINEAR TECHNOLOGY APPLICATIONS ENGINEERING FOR ASSISTANCE.

THIS CIRCUIT IS PROPRIETARY TO LINEAR TECHNOLOGY AND SUPPLIED FOR USE WITH LINEAR TECHNOLOGY PARTS.

- NOTE: UNLESS OTHERWISE SPECIFIED
1. ALL RESISTORS ARE IN 0402. ALL CAPACITORS ARE IN 0402.
  2. INSTALL SHUNTS AS SHOWN.

APPROVALS	
PCB DES.	JW
APP ENG.	WALKER B.
SCALE = NONE	

1630 McCarthy Blvd.  
Milpitas, CA 95035  
Phone: (408)432-1900 www.linear.com  
Fax: (408)434-0507  
LTC Confidential-For Customer Use Only

TITLE: SCHEMATIC		
<b>1A FAULT TOLERANT MICROPPOWER STEP-DOWN SWITCHING REGULATOR</b>		
SIZE N/A	IC NO. <b>LT3695EMSE-3.3/5</b>	REV. <b>1</b>
DATE: 03-29-10		SHEET 1 OF 1