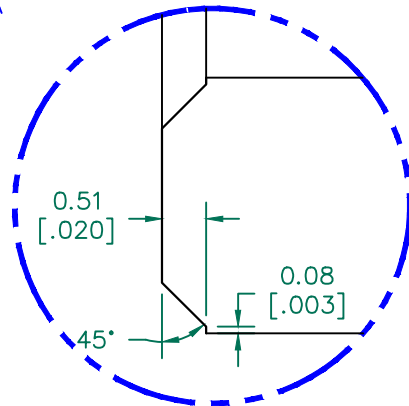


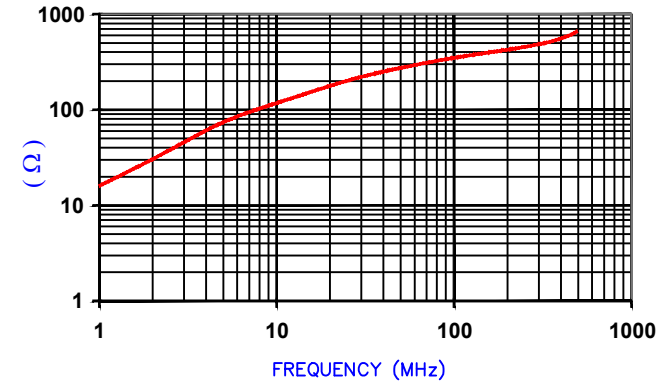
SEE
DETAIL "A"



DETAIL "A"
SCALE: 12:1

IMPEDANCE (Z)			
Frequency	25 MHz	100 MHz	300 MHz
Nominal (REF)	200 Ω	349 Ω	481 Ω
Minimum	- Ω	279 Ω	- Ω

Z vs. FREQUENCY
(REF. ONLY)



AGILENT E4991A Impedance/Material Analyzer
HP 16092A-Test Fixture. TEST REF. 5460

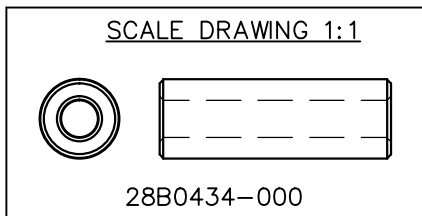
FERRITE CORE DIMENSIONS (SPEC): MM [IN]

A	11.00 [.433]	+	0.20 [.008]
B	5.10 [.201]	+	0.13 [.005]
C	32.00 [1.260]	+	0.48 [.019]

WEIGHT/1000 11.72 kgs [25.85 Lbs]

NOTES: UNLESS OTHERWISE SPECIFIED

1. COSMETIC SPECIFICATION REFER TO WI-QA-038.



DIMENSIONS ARE IN mm [INCHES].				This print is the property of Laird Tech. and is loaned in confidence subject to return upon request and with the understanding that no copies shall be made without the written consent of Laird Tech. All rights to design or invention are reserved.				
REV	DESCRIPTION	DATE	INT					
G	UPDATE THE LOGO	05/13/15	QIU	PROJECT/PART NUMBER: 28B0434-000		REV G	PART TYPE: FERRITE CORE	DRAWN BY: TMB
F	UPDATE COMPANY LOGO CHG TOLS ON A	03/05/08	JRK					
E	UPDATE MIN Z SPEC @ 100 MHZ	05/29/07	JRK					
D	UPDATE COMPANY LOGO	04/19/07	TMB					
C	UPDATE MIN Z SPEC @100MHZ	09/26/06	TMB					
B	ADD TEST CURVE AND REF #	02/17/06	TMB	DATE: 02/01/05	SCALE: 3 : 1	MATERIAL: FERRITE		
A	ORIGINAL DRAFT	02/01/05	TMB	CAD # 28B0434-000-G	TOOL # B0434			
REV	DESCRIPTION	DATE	INT					