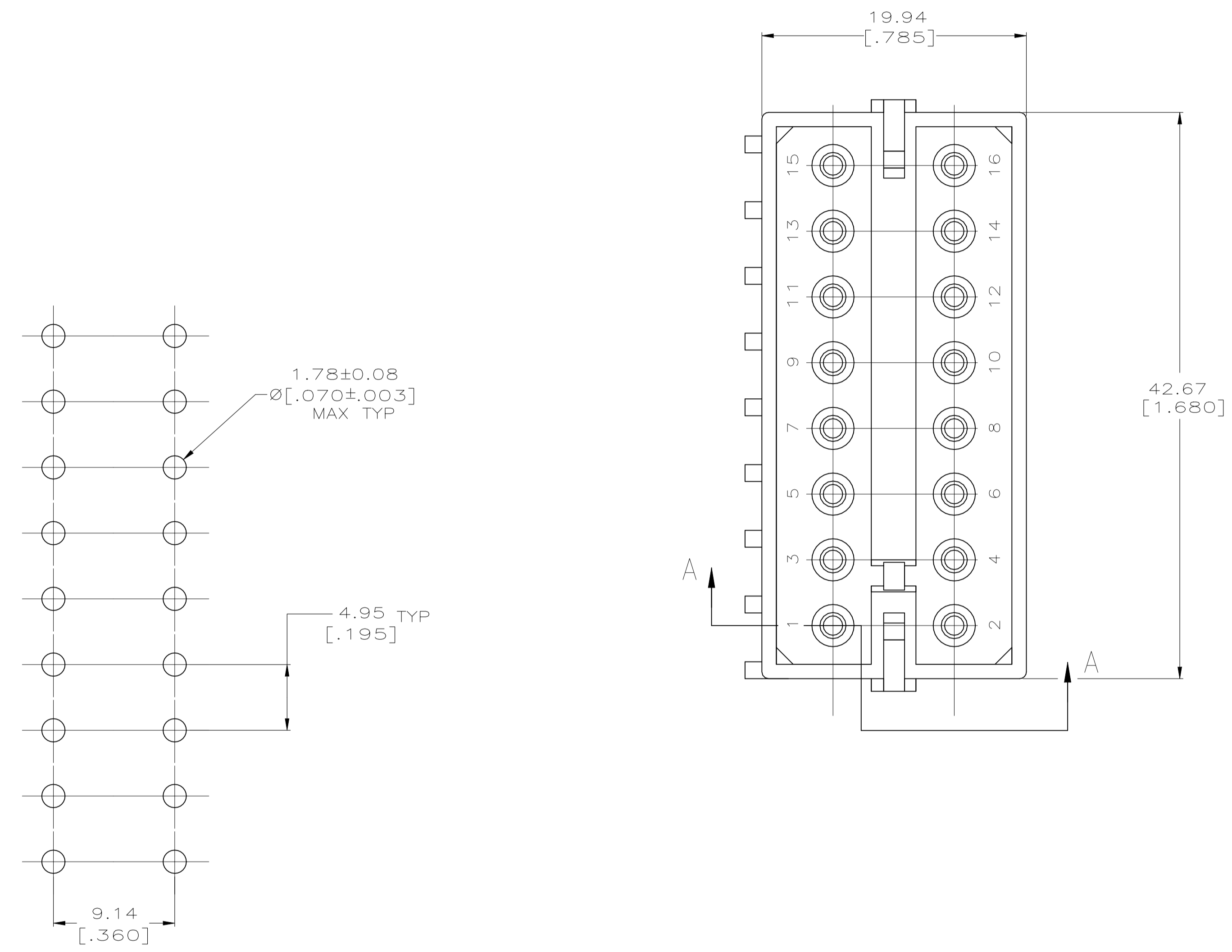
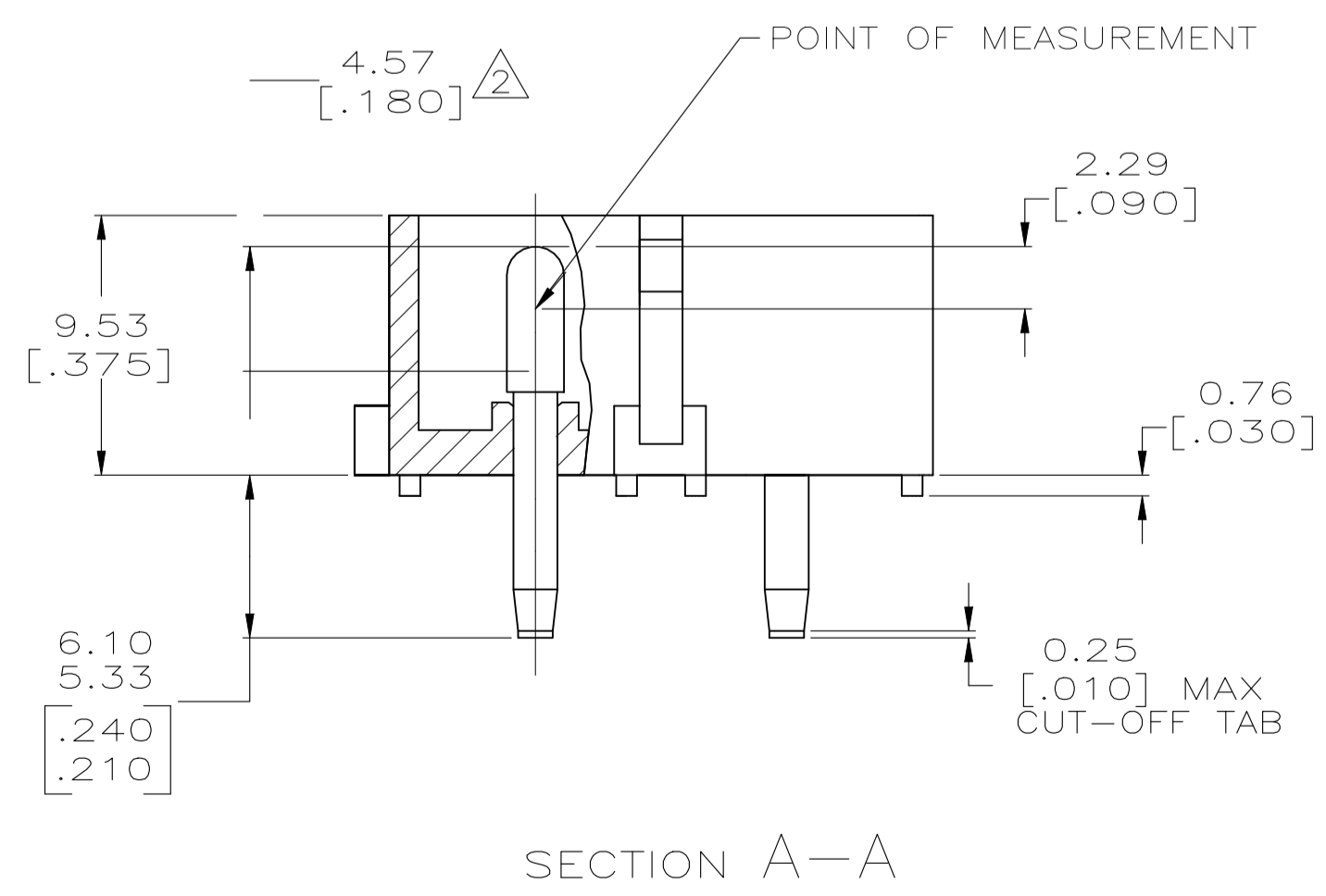


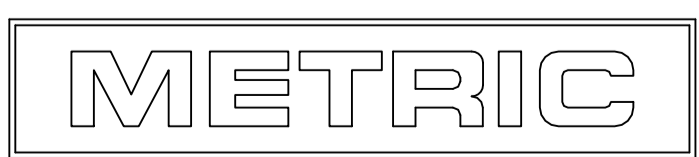
LOC		DIST		ZONE		LTR		REVISIONS		DATE	APPD
CM	53					N1		REVISED PER ECR-21-117185	25OCT2021		



- PARTS MUST COMPLY WITH AMP SOLDERABILITY SPECIFICATION 109-11-3.
- CONTACT IS PLATED OVERALL WITH 0.00127 [.000050] NICKEL, THEN 0.00076 [.00030] GOLD OVER CONTACT LENGTH INDICATED AND MATTE TIN ON SOLDER TAIL END.
- DIMENSIONS IN BRACKETS ARE IN INCHES.
- DIMENSION SHOWN REPRESENT PRODUCT IN DRY CONDITION. ADDITIONAL 2% GROWTH DUE TO END USE LOCATION MOISTURE ABSORPTION MAY OCCUR AND SHOULD BE ACCOUNTED FOR.



RECOMMENDED MOUNTING HOLE PATTERN FOR 3.18 [.125] THICK P.C. BOARD



THIS DRAWING IS A CONTROLLED DOCUMENT FOR AMP INCORPORATED. IT IS SUBJECT TO CHANGE AND THE CONTROLLING ENGINEERING ORGANIZATION SHOULD BE CONTACTED FOR THE LATEST REVISION.

COPPER ALLOY, GOLD Δ		NYLON, 6/6, NATURAL	350427-2
COPPER ALLOY, PRE-TIN		NYLON, 6/6, NATURAL	350427-1
PIN CONTACT MATERIAL AND FINISH		HOUSING MATERIAL AND COLOR	PART NO
DO NOT SCALE PRINT. UNLESS SPECIFIED		DR 10-29-93 K. SALMON	AMP Incorporated Harrisburg, PA 17105-3608
DIMENSIONS IN mm [INCHES]		CHK 10-29-93 R. SWING	
TOLERANCES ON :		APPD 11-9-93 C. MARTIN	
2 PLC DEC ± 0.13 [.005]		APPD 11-9-93 C. MARTIN	
MATERIAL		PRODUCT SPEC	NAME
SEE TABLE		-	HEADER ASSEMBLY, 16 CIRCUIT, COMMERCIAL MATE-N-LOK™
FINISH		APPLICATION SPEC	SIZE
SEE TABLE		-	D 00779
WEIGHT		-	CAGE CODE
		-	C-350427
		-	DRAWING NO
		-	SCALE
		-	4:1
		-	SHEET
		-	10F 1