

ITEM	MOLEX P/N	DESCRIPTION	QTY	UOM
A,B	2074580003	L1NK 396 Receptacle Housing -1X3	2	PC
C	2074590003	L1NK 396 TPA -1X3	2	PC
D	455703002	KKGen2 156 Tin/nickel Crimp 18-20 FORMED	6	PC
E	-	LABEL	1	PC

FROM	TO	CABLE DESCRIPTION	COLOR
A1	B3	18AWG PVC BK UL1015 HOOKUP WIRE	BLACK
A2	B2		
A3	B1		

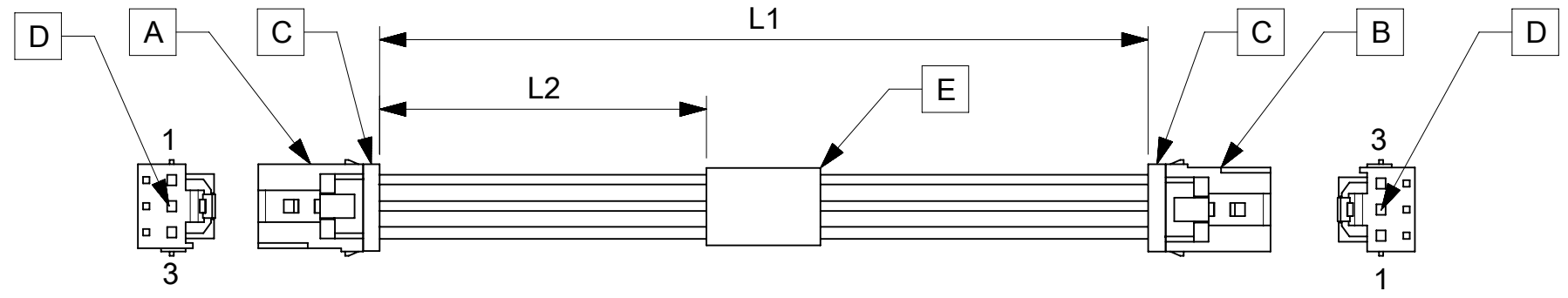


TABLE			
PART NUMBER	L1	L2	TITLE
369210300	75±5	25REF	Link396 3 Circuit 75MM
369210302	150±10	63REF	Link396 3 Circuit 150MM
369210303	300±15	138REF	Link396 3 Circuit 300MM
369210310	1000±20	488REF	Link396 3 Circuit 1000MM

- NOTES**
1. Cable assembly must pass 100% continuity and polarity test.
 2. Label text must be 2mm max. In height with Arial font.
 3. Connector view shown is from mating side.

P/N:36921XXXX — MOLEX PN
 MOLEX
 BATCH WK/YR

DATE	REV	DESCRIPTION	REVISED BY
2019.03.27	A	INITIAL RELEASE	SSHIVASHANKA

SYMBOLS				THIS DRAWING CONTAINS INFORMATION THAT IS PROPRIETARY TO MOLEX ELECTRONIC TECHNOLOGIES, LLC AND SHOULD NOT BE USED WITHOUT WRITTEN PERMISSION			
▽ = 0	mm	SCALE	NTS	CURRENT REV DESC:			
▽ = 0	GENERAL TOLERANCES (UNLESS SPECIFIED)			<p>molex</p> <p>SEE TABLE</p>			
▽ = 0	ANGULAR TOL ± °						
▽ = 0	4 PLACES	±		EC NO: 616867			
▽ = 0	3 PLACES	±		DRWN: SSHIVASHANKA 2019/03/27			
▽ = 0	2 PLACES	±		CHK'D: MNARAYAN01 2019/05/08			
▽ = 0	1 PLACE	±		APPR: MNARAYAN01 2019/05/08			
▽ = 0	0 PLACES	±		INITIAL REVISION:			
▽ = 0	DRAFT WHERE APPLICABLE MUST REMAIN WITHIN DIMENSIONS			DRWN: SSHIVASHANKA 2019/03/27		DOC NUMBER	
▽ = 0	THIRD ANGLE PROJECTION			APPR: MNARAYAN01 2019/05/08		369210300	
DRAWING		SERIES		MATERIAL NUMBER		DOC TYPE DOC PART REVISION	
A4-SIZE		36921		SEE TABLE		PSD 000 A	
CUSTOMER				SHEET NUMBER			
GENERAL MARKET				1 OF 1			

DOCUMENT STATUS	P1	RELEASE DATE	2019/05/08	14:41:14
-----------------	----	--------------	------------	----------