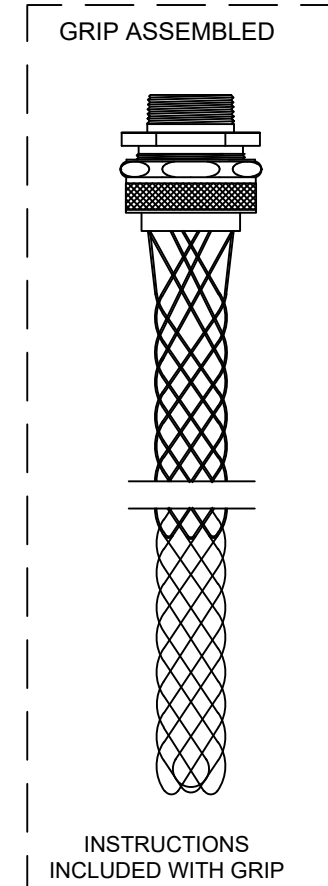
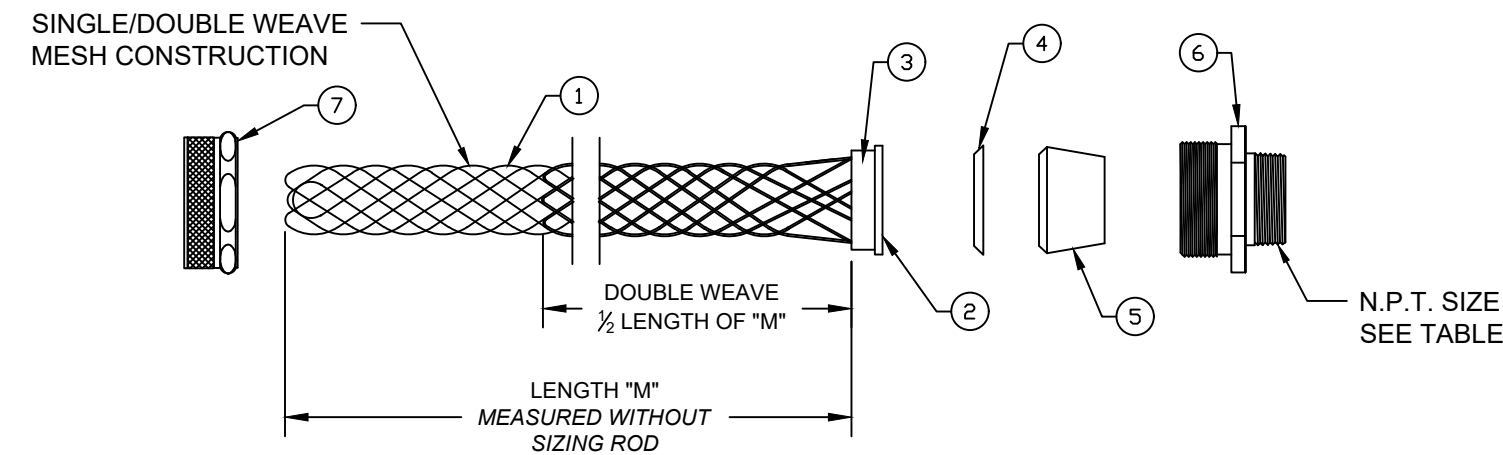


CATALOG NUMBER	MATERIAL NUMBER	CABLE RANGE	LENGTH "M"	N.P.T. FITTING SIZE	FORM SIZE	UL LISTED	CSA APPROVED	PRODUCT SELECTION NUMBER
36490	1300970250	.187-.250 / 4.75-6.35	4.250±0.500 / 107.95±12.70	3/8	1			PG304
36430	1300970225	.250-.312 / 6.35-7.92	4.250±0.500 / 107.95±12.70					PG305
36431	1300970226	.312-.375 / 7.92-9.53	4.250±0.500 / 107.95±12.70					PG306
36432	1300970227	.375-.437 / 9.53-11.10	5.500±0.500 / 139.70±12.70					PG307
36250	1300970160	.187-.250 / 4.75-6.35	4.250±0.500 / 107.95±12.70	1/2	2			PG404
36251	1300970161	.250-.375 / 6.35-9.53	4.250±0.500 / 107.95±12.70					PG406
36254	1300970163	.375-.500 / 9.53-12.70	6.250±0.500 / 158.75±12.70				PG408	
36256	1300970165	.500-.625 / 12.70-15.88	6.500±0.500 / 165.10±12.70				PG410	
36245	1300970156	.625-.750 / 15.88-19.05	8.500±1.000 / 209.55±25.40	3	---	---		PG412
36246	1300970157	.750-.875 / 19.05-22.23	9.250±1.000 / 234.95±25.40		---	---		PG414
36247	-----	.187-.250 / 4.75-6.35	4.250±0.500 / 107.95±12.70	3/4	2	---	---	PG604
36257	1300970166	.250-.375 / 6.35-9.53	4.250±0.500 / 107.95±12.70					PG606
36259	1300970167	.375-.500 / 9.53-12.70	6.250±0.500 / 158.75±12.70				PG608	
36261	1300970168	.500-.625 / 12.70-15.88	6.250±0.500 / 158.75±12.70		3			PG610
36263	1300970170	.625-.750 / 15.88-19.05	8.500±1.000 / 209.55±25.40				PG612	
36248	1300970158	.750-.875 / 19.05-22.23	9.250±1.000 / 234.95±25.40	4	---	---		PG614
36249	1300970159	.437-.562 / 11.10-14.27	5.750±0.500 / 146.05±12.70		---	---		PG808
36275	1300970179	.562-.687 / 14.27-17.45	6.500±0.500 / 165.10±12.70	1	4	---		PG810
36265	1300970171	.625-.750 / 15.88-19.05	8.500±1.000 / 209.55±25.40					PG812
36267	1300970172	.750-.875 / 19.05-22.23	9.250±1.000 / 234.95±25.40				PG814	
36269	1300970173	.875-1.000 / 22.23-25.40	8.125±1.000 / 206.38±25.40				PG816	
36270	1300970174	1.000-1.125 / 25.40-28.58	9.000±1.000 / 228.60±25.40	5	---	---		PG818
36276	1300970180	1.125-1.250 / 28.58-31.75	10.000±1.000 / 254.00±25.40		---	---		PG820



ITEM	DESCRIPTION	MATERIAL
1	WIRE MESH	STAINLESS STEEL
2	INNER RING	ALUMINUM
3	OUTER RING	ALUMINUM
4	FRICTION RING	ZINC PLATED STEEL
5	GROMMET	RUBBER
6	THREADED BODY	ALUMINUM
7	COMPRESSION NUT	ALUMINUM



FUNCTIONAL SYMBOLS F=0 E=0 P=0	THIS DRAWING CONTAINS INFORMATION THAT IS PROPRIETARY TO MOLEX ELECTRONIC TECHNOLOGIES, LLC AND SHOULD NOT BE USED WITHOUT WRITTEN PERMISSION											
	DIMENSION UNITS <b>INCH/MM</b>		SCALE <b>NTS</b>		CURRENT REV DESC: UPDATE CABLE RANGE FOR 36249 AND 36275 NUMBERS						<b>molex</b>	
	GENERAL TOLERANCES (UNLESS SPECIFIED)											
	4 PLACES ±---		mm		INCH		EC NO: 699853				STRAIN RELIEF	
3 PLACES ±---		±0.005				DRWN: VOU 2022/03/16				DELUXE STRAIGHT MALE 3/8" TO 1" N.P.T.		
2 PLACES ±0.13		±0.01				CHK'D: DACHAMMER 2022/03/21				PRODUCT CUSTOMER DRAWING		
1 PLACE ±0.25		±0.02				APPR: HKNEELAND 2022/03/25						
0 PLACES ±---		±---				INITIAL REVISION:				DOCUMENT NUMBER		
ANGULAR TOL ± 0.5 °						DRWN: HRUIZ01 2014/10/20				SD-130097-103		
DRAFT WHERE APPLICABLE MUST REMAIN WITHIN DIMENSIONS						APPR: JFMURPHY 2016/05/04				DOC TYPE/DOC PART/REVISION		
						THIRD ANGLE PROJECTION		DRAWING		SHEET NUMBER		
								B-SIZE		1 OF 1		
						SERIES		MATERIAL NUMBER		CUSTOMER		
						130097		SEE TABLE		GENERAL MARKET		