



ANATECH ELECTRONICS INC
RF & Microwave Filters & Products

1850-1910 MHz / 1930-1990 MHz Ceramic Duplexer

Part Number: AM1900D171



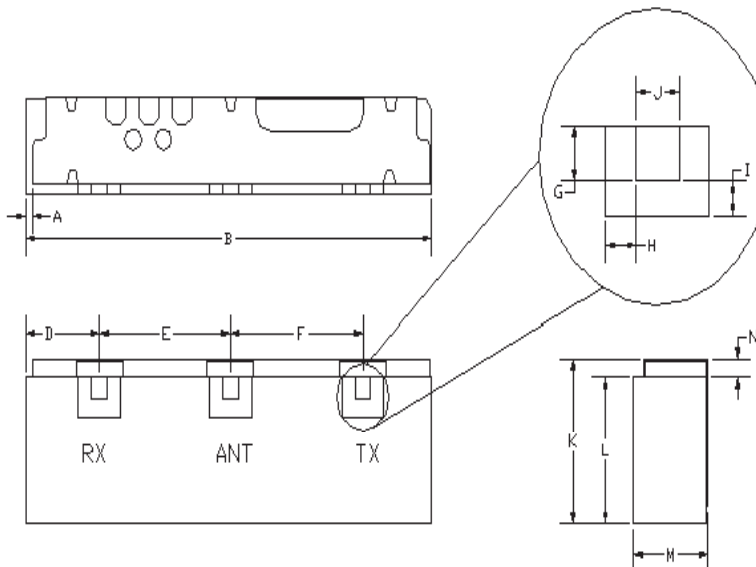
<u>Characteristics</u>	<u>Band 1</u>	<u>Band 2</u>
Passband:	1850-1910 MHz	1930-1990 MHz
Bandwidth:	60 MHz	60 MHz
Passband Return Loss:	13.5 MHz	13.5 MHz
Passband Insertion Loss:	2.6 dB	3.0 dB
Passband Ripple:	2.1 dB	2.1 dB
Input / Output Impedance:	50 Ohms	50 Ohms
Isolation:	52 dB	45 dB
Power Handling:	2 W max	2 W max

<u>Mechanical</u>	
Mounting Method:	SMT
Dimensions:	19.92 x 6.45 x 4.60 mm

<u>Environmental</u>	
Operating Temperature:	-40 to +85 deg.C
Storage Temperature:	-50 to +90 deg.C

This product is RoHs compliant.

Outline Drawing:



Dim	Nominal (mm)	Tolerance (mm) +/- or max
*A	0.13	0.13
B	19.92	max
D	2.20	0.25
E	7.70	0.13
F	7.70	0.13
G	0.89	0.13
H	0.76	0.13
I	0.76	0.13
J	0.89	0.13
K	6.45	max
L	5.37	0.20
M	4.60	max
N	0.76	0.13

*Indicates Reference Only



ANATECH ELECTRONICS INC
RF & Microwave Filters & Products

1850-1910 MHz / 1930-1990 MHz Ceramic Duplexer

Part Number: AM1900D171



Response Plot:

