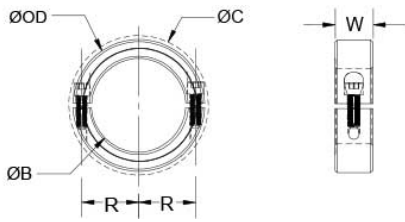




SPH-51-F


Ruland SPH-51-F, 3 3/16" Heavy Duty Shaft Collar, Black Oxide Steel, Two-Piece Clamp Style, 5" OD, 1.375" Width



Description

Ruland SPH-51-F is a two-piece heavy duty shaft collar with a 3.1875" bore, 5" OD, and 1.375" width. The clamp style design does not mar the shaft, is easy to remove, and is indefinitely adjustable. It is commonly used for guiding, spacing, stopping, mounting, and component alignment. Equipment manufacturers benefit from the tightly controlled face to bore perpendicularity (TIR of ? .002"). Perpendicularity is critical for alignment when the shaft collar is used as a load bearing face, mechanical stop, or for mounting components such as gears or bearings. Proprietary processes have been developed by Ruland to maintain superior fit, finish, and holding power. SPH-51-F is stamped with the Ruland name and bore size for ease of identification. This heavy duty shaft collars have larger ODs and screws for higher holding power. Halves are mated throughout the manufacturing process for proper fit and alignment. Forged screws test beyond ANSI standards to ensure maximum holding power. SPH-51-F is manufactured from solid bar stock sourced from select North American mills and machined to a fine burr free finish. Ruland uses 1215 lead-free steel with a proprietary black oxide finish that produces a fine glossy finish while increasing holding power and resisting corrosion. SPH-51-F is RoHS3 and REACH compliant and manufactured in our Marlborough, MA factory under strict controls using proprietary processes.

Product Specifications

| | | | |
|-------------------------------|--|------------------------------------|---|
| Bore (B) | 3.1875 in | Bore Tolerance | +0.004 in / -0.000 in |
| Outer Diameter (OD) | 5 in | Clearance Diameter (C) MAX | 5.397 in |
| Width (W) | 1.375 in | Width Tolerance | +0.003 in / -0.010 in |
| Recommended Gap | 0.188 in | Recommended Shaft Tolerance | +0.0000 in / -0.0010 in |
| Forged Clamp Screw | 1/2-20 x 1 3/4 | Screw Material | Alloy Steel |
| Hex Wrench Size | 3/8 in | Screw Finish | Black Oxide |
| Seating Torque | 1612 lb-in | Screw Location (R) | 2.063 in |
| Number of Screws | 2 ea | Axial Load | 20000 lbs |
| Material Specification | 1215 Bar or A519 Hot Finished 1026 Carbon Steel | Finish Specification | Hot Process Black Oxide, Impregnated with Naphthenic Oil, Centrifugally Dried |
| Manufacturer | Ruland Manufacturing | Country of Origin | USA |
| Temperature | -40°F to 350°F (-40°C to 176°C) | Weight (lbs) | 4.224500 |
| UPC | 634529024362 | Tariff Code | 8483.60.8000 |
| UNSPC | 31162811 | | |
| Note 1 | Performance ratings are for guidance only. The user must determine suitability for a particular application. | | |
| Prop 65 |  WARNING This product can expose you to the chemical Ethylene Thiourea, known to the State of California to cause cancer and birth defects or other reproductive harm. For more information go to www.P65Warnings.ca.gov . | | |

Installation Instructions

1. Use the SPH-51-F heavy duty shaft collar as it is received.
2. Wipe the bore clean.
3. Apply a thin coat of light oil to the shaft.
4. Place the collar onto the desired shaft location and tighten it using a 3/8 in hex wrench until a slight resistance is felt.
5. Be sure to maintain the gap of 0.188 in between the two halves of the collar during installation.
6. Wring collar into its final position and tighten the screw to the full recommended seating torque of 1612 lb-in using a 3/8 in torque wrench.

