



1. Loosen the screw keeping the door closed and open the distribution box by carefully lifting open the clips. Make sure that the cable grommets are facing toward you.



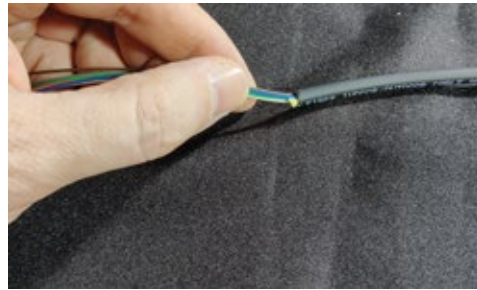
2. Carefully unclip the splice tray and open it completely. Unscrew and remove all of the cable tie-downs.



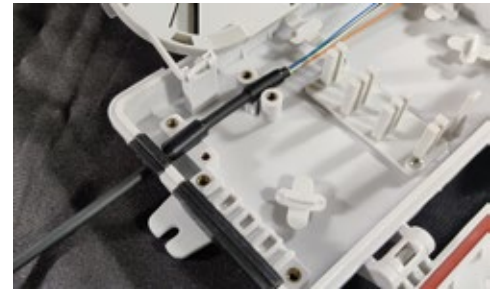
3. Remove the cable grommet with the large opening from the distribution box. Use a utility knife to cut the scored "X" to help pass the cable into the box.



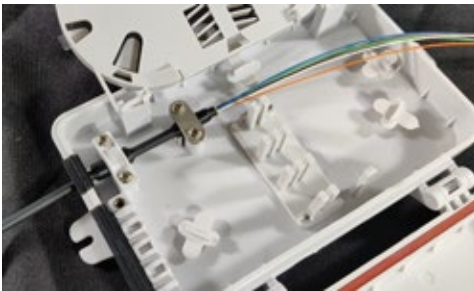
4. Measure 27-inches from the end of the cable and make a mark with a black marker. Feed the grommet over the cable beyond the mark on the cable jacket.



5. Remove the jacket at the mark and cut off the aramid fiber.



6. Wrap electrical tape around the cable where the cable clamps are located to ensure a secure fit. Make sure the grommet is fit into the body of the distribution box.



7. Reinstall the cable clamps for the distribution cable and verify the cable is secure.



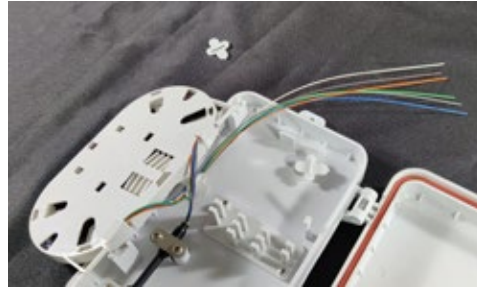
8. Using a flathead screwdriver, carefully pry upward between the hinge of the splice tray to remove it from the distribution box. Remove the clear cover of the splice tray.



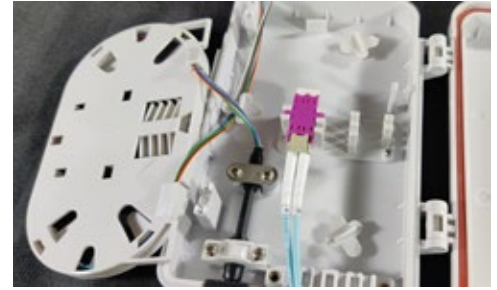
9. Feed the fibers around the outer oval of the splice tray.



10. Flip the splice tray over and remove the cable "T" under the hinged area of the splice tray and the top of the distribution box.



11. Lay the fiber ends between the edge of the distribution box and the base of the cable "T" under the splice tray, then reinstall the "T" top. Terminate the fibers as needed.



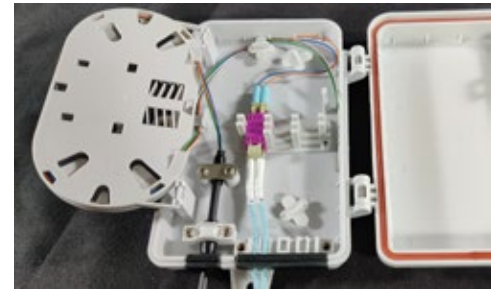
12. Remove the patch cable grommet from the bottom of the distribution box. Insert a fiber optic coupler into the base of the distribution box and connect the patch cable into the coupler.



13. Plug the connectors from the distribution cable into the appropriate fiber optic coupler. Any unused fibers can be routed to the side the box for future use. Reinstall the cable "T" at the top end of the distribution box.



14. Use a utility knife to open the bottom of the grommet to accommodate the patch cables.



15. Feed the patch cables into the bottom of the grommet. Reinstall the grommet into the bottom of the distribution box. Make sure each strand of the patch cables fit in a single spot within the cable clamp area.



16. Reinstall the cable clamp for the patch cables. Carefully Reinstall the splice tray in the hinge locations.



17. Secure the splice tray onto the locking clip. Replace the splice tray cover.



18. Close the distribution box making sure there is an audible click from the side clips. Secure the box with the security hex bolt. Mound the box onto the wall.