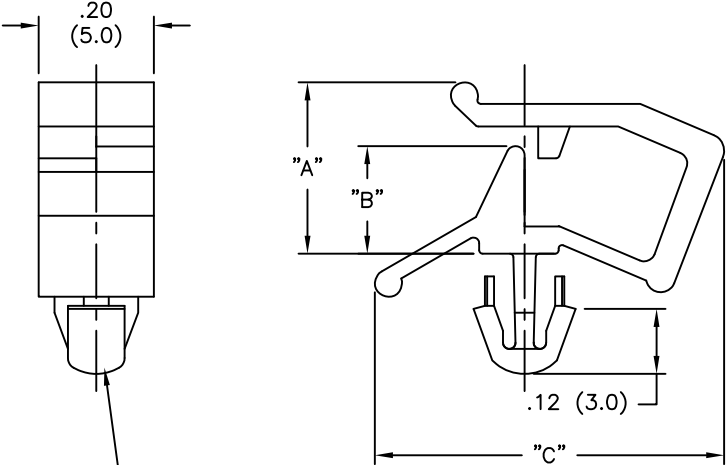


PART NO.	"A" REF.	"B"	"C" REF.
WS-SE1-1-01	.19 (4.8)	.09 (2.4)	.50 (12.7)
WS-SE1-2-01	.26 (6.7)	.16 (4.2)	.59 (15.1)
WS-SE1-3-01	.34 (8.5)	.23 (5.7)	.81 (20.3)



TO FIT A .138±.003  
(3.50±0.08) DIA. HOLE,  
IN A .02 TO .06  
(0.5 TO 1.6) THICK PANEL

NOTES:

- MATERIAL: NYLON 66 (RMS-01).  
FLAME RETARDANT NYLON 66 (RMS-19)  
AVAILABLE BY SPECIAL ORDER.
- COLOR: NATURAL

A   CHANGED FILE NO. AND TITLE BLOCK   SM 10.25.02			TITLE: WIRE SADDLE-SIDE ENTRY			DWG IN IN (MM)		FINAL		PR		
REV   DESCRIPTION   ENGR DATE			TOLERANCES UNLESS NOTED .XX=±.010 .XXX=±.005 FRAC=±1/64 ANG=±1'		FILE # WS-SE1		DWN: J.B.		DT: 08-28-95		PART #	
			MAT'L: SEE NOTES		CHKD:		ENGR:		SEE TABLE		PRINT TYPE	
			RE: RICHCO, INC.		RICHCO INC. PO BOX 804238, CHICAGO, 60680 (773) 539-4060						CA	