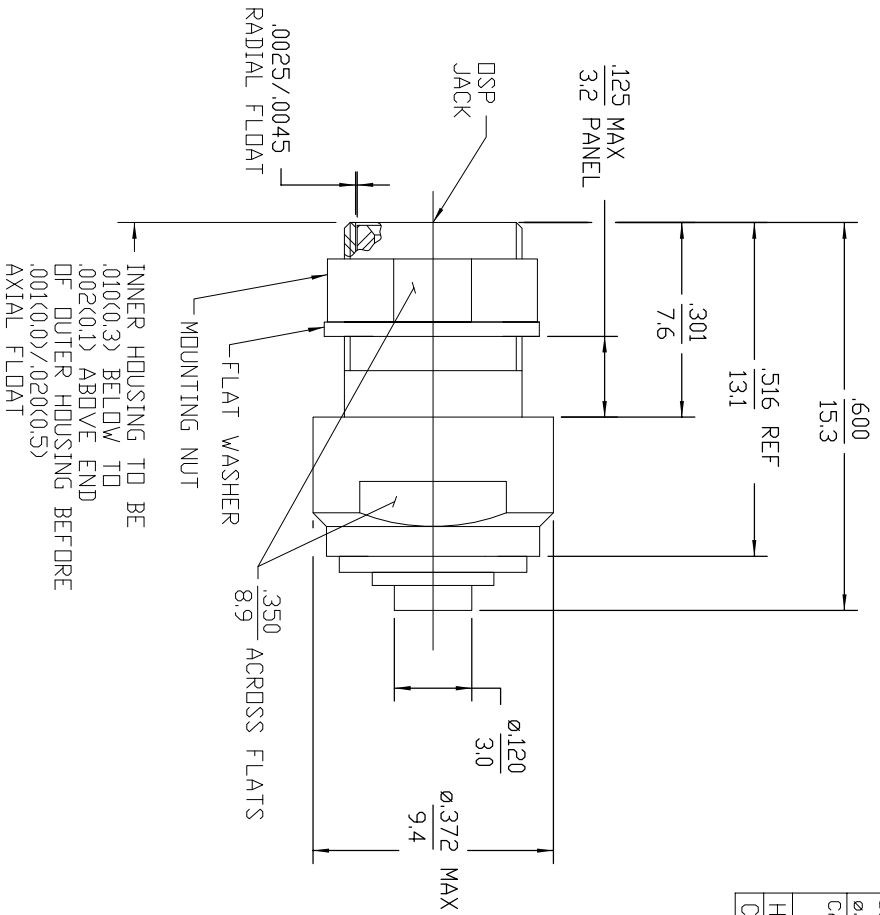
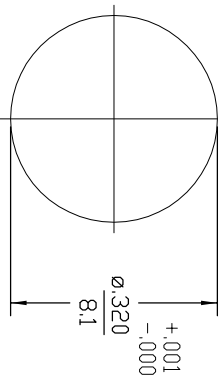


DESIGNED FOR USE WITH		REVISIONS	
REV	DESCRIPTION	DATE	APPROVED
041	REVISED	7/25/96	<i>[Signature]</i>
A1	REVISED	23MDV17	<i>[Signature]</i>



NOTES:  
1. CAPTURED CENTER CONTACT



COMPONENT	MATERIAL	FINISH
HOUSING, INNER BUSHING	STAINLESS STEEL PER ASTM-A484 AND ASTM-A582, TYPE 303	GOLD PLATE PER MIL-G-45204
HOUSING, OUTER MOUNTING NUT	STAINLESS STEEL PER ASTM-A484 AND ASTM-A582, TYPE 303	PASSIVATE PER QQ-P-35
DIELECTRIC	TFE FLUOROCARBON PER ASTM-D-1457	N/A
CENTER CONTACT	BERYLLIUM COPPER PER ASTM-B-196 DR ASTM-B-197, ALLOY C17300, CONDITION H	GOLD PLATE PER MIL-G-45204
CONTACT SLEEVE	BERYLLIUM COPPER PER ASTM-B-196, ALLOY C17300, CONDITION H	GOLD PLATE PER MIL-G-45204
CONTACT RING	BERYLLIUM COPPER PER ASTM-B-194, ALLOY C17200, CONDITION H	NICKEL PLATE PER QQ-N-290
RETAINING RING	BERYLLIUM COPPER PER ASTM-B-194, ALLOY C17200, CONDITION H	NICKEL PLATE PER QQ-N-290
FLAT WASHER	BRASS PER ASTM-B-16	NICKEL PLATE PER MIL-C-26074
SPRING	MUSIC WIRE	NICKEL PLATE PER MIL-C-26074

UNLESS OTHERWISE SPECIFIED DIMENSIONS ARE IN INCHES  
 DEC. ±.005 ANGLES ± 1°  
 FRACTION ± 1/64  
 THESE DRAWINGS AND SPECIFICATIONS ARE THE PROPERTY OF AMP AND SHALL NOT BE REPRODUCED OR COPIED OR USED IN WHOLE OR IN PART OR THE BASIS OF THE MANUFACTURE OF STATE OR FEDERAL INSTRUMENTS WITHOUT PERMISSION.

DRAWN BY: K.C. MAHER DATE: 1/5/88  
 CHECKED BY: M.H.M. DATE: 1/7/88  
 APPLIED BY: BAR. DATE: 1/7/88  
 USE ASSY PROCEDURE  
 408-04596  
 NO. AB (45-047)

TITLE		AMP Incorporated 140 Fourth Avenue Valhalla, NY 02451-7599	
SIZE	CODE IDENT. NO.	REV	REV
B	26805	04	1
SCALE	5:1	SHEET 1 OF 1	

COPY IN PUERTO RICO

CUSTOMER DRAWING

AMP PART # 1057230-1  
SHEET 1 OF 1 REV A1