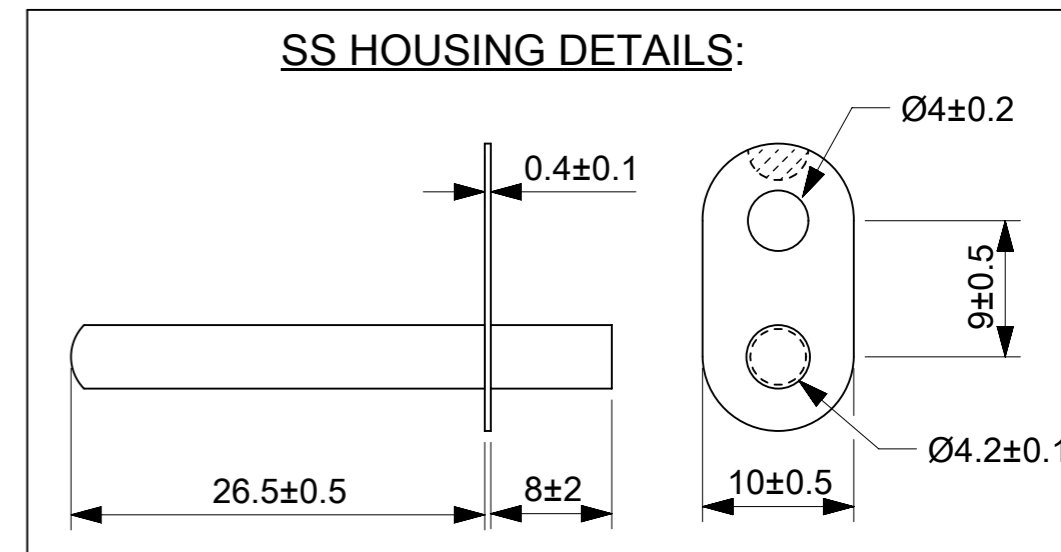


NOTES:

1. RESISTANCE @ 25°C : 10KΩ ± 1%
2. BETA VALUE (0/50°C) : 3892K ± 1%
3. OPERATING TEMPERATURE RANGE : -40°C TO +250°C.
4. THERMAL TIME CONSTANT : 15SEC IN WATER
5. VOLTAGE BREAKDOWN STRENGTH : 1500V AC FOR 3SEC.
6. INSULATION RESISTANCE : A MINIMUM OF 100MΩ @ 500VOLTS DC.
7. DISSIPATION FACTOR : 1mW/°C.
8. LASER MARKING "MOLEX-DATE CODE(MM/YY)" & "XXK(R25-value) XXXX(B-value)"



THIS DRAWING CONTAINS INFORMATION THAT IS PROPRIETARY TO MOLEX ELECTRONIC TECHNOLOGIES, LLC AND SHOULD NOT BE USED WITHOUT WRITTEN PERMISSION									
FUNCTIONAL SYMBOLS	DIMENSION UNITS	SCALE	CURRENT REV DESC:						
$\nabla_A = 0$	mm	NTS	<p style="text-align: center;">molex</p> <p style="text-align: center;">GLASS NTC MOUNTING -10K±1%,B3892,L100</p> <p style="text-align: center;">PRODUCT CUSTOMER DRAWING</p>						
$\nabla_E = 0$	GENERAL TOLERANCES (UNLESS SPECIFIED)								
$\nabla_F = 0$	ANGULAR TOL ± °								
DIVISIONAL SYMBOLS	4 PLACES	±							
	3 PLACES	±	EC NO: 733229	2022/12/23					
	2 PLACES	±	DRWN: NANDAK	2022/12/23					
	1 PLACE	±	CHK'D: RBBHASKAR	2022/12/23					
	0 PLACES	±	APPR: RBBHASKAR	2022/12/23					
	DRAFT WHERE APPLICABLE MUST REMAIN WITHIN DIMENSIONS		INITIAL REVISION:		DOCUMENT NUMBER		DOC TYPE	DOC PART	REVISION
	THIRD ANGLE PROJECTION		DRWN: RAVIKM	2022/01/28	2185353617		PSD	000	B4
	DRAWING		APPR: RBBHASKAR	2022/02/10	MATERIAL NUMBER		CUSTOMER	SHEET NUMBER	
	A3-SIZE		SERIES	218535	2185353617		GENERAL MARKET	1 OF 2	

RESISTANCE VS TEMPERATURE CHARACTERISTICS

TEMP (°C)	Rmin(KΩ)	Rnom(KΩ)	Rmax(KΩ)
-40	355.513	339.798	324.748
-35	254.681	244.229	234.182
-30	184.656	177.642	170.877
-25	135.412	130.669	126.080
-20	100.370	97.142	94.008
-15	75.154	72.945	70.795
-10	56.815	55.298	53.817
-05	43.344	42.298	41.276
00	33.352	32.634	31.928
05	25.876	25.383	24.896
10	20.233	19.896	19.562
15	15.939	15.720	15.483
20	12.645	12.492	12.340
25	10.100	10.000	9.900
30	8.154	8.056	7.959
35	6.624	6.531	6.438
40	5.412	5.325	5.239
45	4.446	4.366	4.287
50	3.672	3.600	3.528
55	3.049	2.983	2.917
60	2.5439	2.4839	2.4250
65	2.1325	2.0784	2.0256
70	1.7957	1.7472	1.6998
75	1.5188	1.4752	1.4328
80	1.2900	1.2510	1.2130
85	1.1002	1.0651	1.0311
90	0.9420	0.9106	0.8801
95	0.8096	0.7814	0.7541
100	0.6984	0.6730	0.6486
105	0.6046	0.5818	0.5598
110	0.5252	0.5047	0.4849
115	0.4577	0.4393	0.4215
120	0.4003	0.3836	0.3676
125	0.3511	0.3360	0.3216
130	0.3089	0.2953	0.2822
135	0.2726	0.2602	0.2484
140	0.2412	0.2300	0.2193
145	0.2141	0.2039	0.1941
150	0.1905	0.1812	0.1723

TEMP (°C)	Rmin(KΩ)	Rnom(KΩ)	Rmax(KΩ)
155	0.1700	0.1615	0.1534
160	0.1521	0.1443	0.1369
165	0.1364	0.1293	0.1225
170	0.1226	0.1161	0.1099
175	0.1105	0.1045	0.0988
180	0.0998	0.0943	0.0891
185	0.0903	0.0853	0.0805
190	0.0820	0.0773	0.0729
195	0.0745	0.0702	0.0662
200	0.0679	0.0639	0.0602
205	0.0620	0.0583	0.0548
210	0.0567	0.0533	0.0501
215	0.0520	0.0488	0.0458
220	0.0478	0.0448	0.0420
225	0.0440	0.0412	0.0386
230	0.0406	0.0380	0.0356
235	0.0375	0.0351	0.0328
240	0.0347	0.0324	0.0303
245	0.0322	0.0300	0.0281
250	0.0299	0.0279	0.0260

FUNCTIONAL SYMBOLS	THIS DRAWING CONTAINS INFORMATION THAT IS PROPRIETARY TO MOLEX ELECTRONIC TECHNOLOGIES, LLC AND SHOULD NOT BE USED WITHOUT WRITTEN PERMISSION		
	DIMENSION UNITS	SCALE	CURRENT REV DESC:
$\nabla_A = 0$	mm	NTS	<p>molex</p> <p>GLASS NTC MOUNTING -10K±1%,B3892,L100</p> <p>PRODUCT CUSTOMER DRAWING</p>
$\nabla_E = 0$	GENERAL TOLERANCES (UNLESS SPECIFIED)		
$\nabla_F = 0$	ANGULAR TOL ± °		
DIVISIONAL SYMBOLS	4 PLACES ±	3 PLACES ±	
	2 PLACES ±	1 PLACE ±	EC NO: 733229
	0 PLACES ±		DRWN: NANDAK 2022/12/23
			CHK'D: RBBHASKAR 2022/12/23
			APPR: RBBHASKAR 2022/12/23
			INITIAL REVISION:
			DRWN: RAVIKM 2022/01/28
			APPR: RBBHASKAR 2022/02/10
			DOCUMENT NUMBER
			2185353617
			DOC TYPE
			PSD
			DOC PART
			000
			REVISION
			B4
			MATERIAL NUMBER
			2185353617
			CUSTOMER
			GENERAL MARKET
			SHEET NUMBER
			2 OF 2