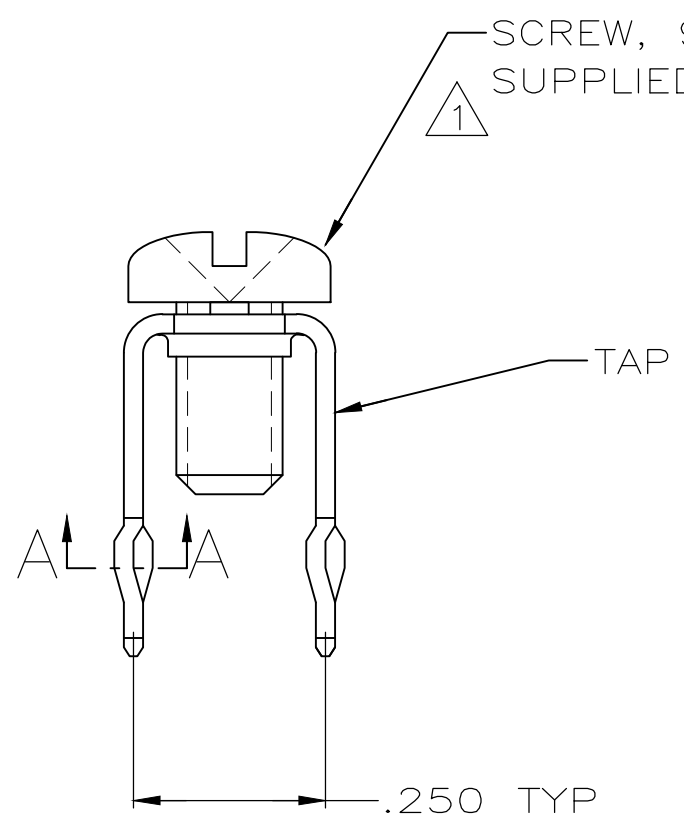
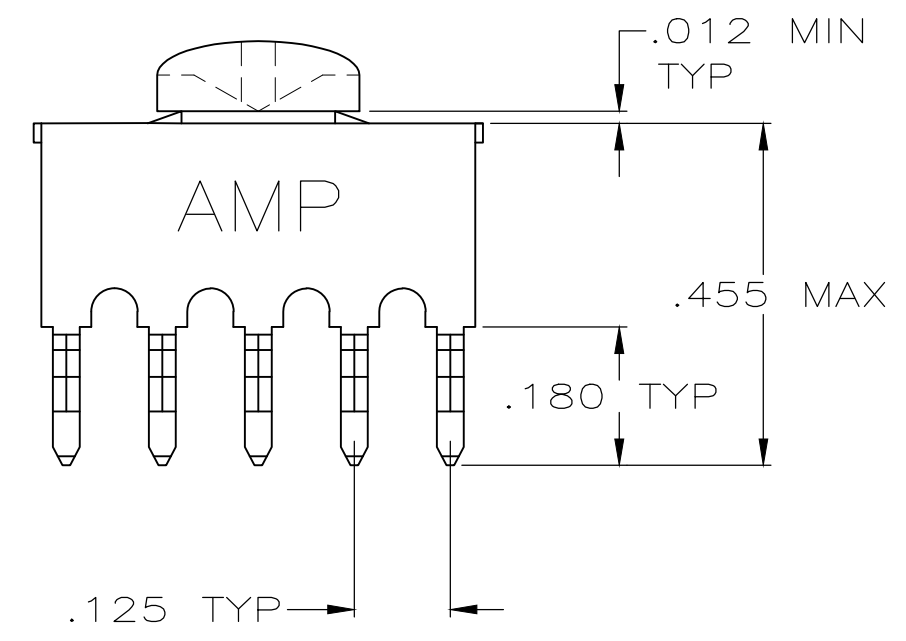
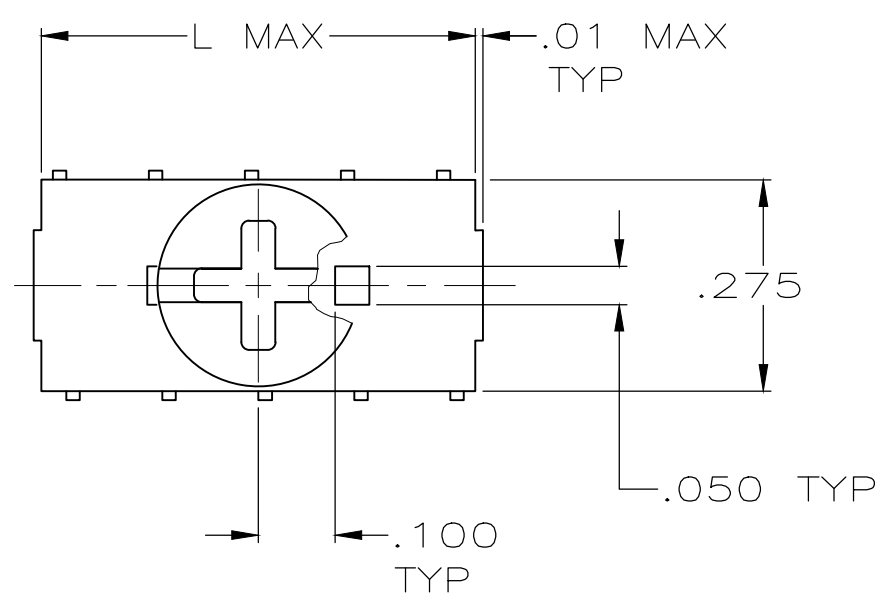


THIS DRAWING IS UNPUBLISHED. RELEASED FOR PUBLICATION
 © COPYRIGHT BY TYCO ELECTRONICS CORPORATION. ALL RIGHTS RESERVED.

LOC	DIST	REVISIONS			
P	LTR	DESCRIPTION	DATE	DWN	APVD
AA	00				
	C3	REV PER ECR-19-012678	13AUG2019	ML	SZ



SCREW, 993879-1
 SUPPLIED UNASSEMBLED, SEE TABLE

- ① TO PREVENT THREAD STRIPPING, SCREW TORQUE SHOULD NOT EXCEED 9 IN LBS.
- ② TAP HOLE IS 6-32UNC-2B, TWO MIN THREADS
- ③ FINISH .000050 REF MATTE TIN OVER .000050 REF MATTE NICKEL BASED-PLATING.
- ④ HIGH CONDUCTIVITY COPPER ALLOY.
- ⑤ REFERENCE APPLICATION SPECIFICATION 114-11000 FOR DRILL HOLE SIZE AND FINISHES
- ⑥ PACKAGE: REEL TYPE, CONNECTOR WIT KAPTON.
- ⑦ PACKAGE: PLASTIC BOX PACKAGE.



SECTION A-A
 SCALE 10:1
 10 PLACES

⑦	.32	NO	6	3-5055323-5
⑥	.32	NO	6	2-5055323-5
	.57	YES	10	1-5055323-0
	.32	YES	6	5055323-9
	.57	NO	10	5055323-6
	.32	NO	6	5055323-5
	L	993879-1	NUMBER OF POSN	PART NO

DIMENSIONS: INCHES		TOLERANCES UNLESS OTHERWISE SPECIFIED:		MATERIAL		FINISH	
0 PLC	± -	0 PLC	± -	④		③	
1 PLC	± -	1 PLC	± -				
2 PLC	± -	2 PLC	± -				
3 PLC	± .008	3 PLC	± .008				
4 PLC	± -	4 PLC	± -				
ANGLES	± -	ANGLES	± -				

THIS DRAWING IS A CONTROLLED DOCUMENT.		DWN	05-04-05		tyco Electronics	Tyco Electronics Corporation	
		CHK	05-04-05			Harrisburg, PA 17105-3608	
		A. FRANTUM			NAME		
		S. FLICKINGER			PRODUCT SPEC		
		108-11030			APPLICATION SPEC		
		114-11000			WEIGHT		
		-			SIZE	CAGE CODE	DRAWING NO
		CUSTOMER DRAWING			A3	00779	C-5055323
		SCALE		4:1	SHEET	1 OF 1	REV
							C3