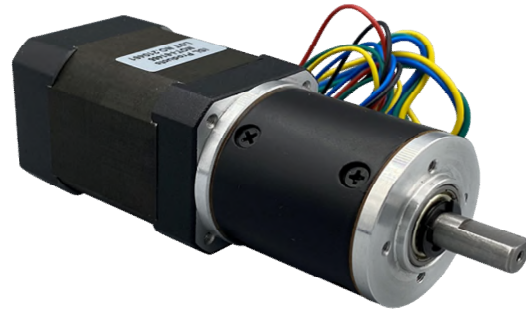




Our BLDC Planetary Gear Motors are an inline solution providing excellent torque output and superior reliability and control.

With endless performance combinations, we have a fully tailored gear motor solution for you.

Contact Us for alternative solutions!



Specifications			
Gearhead Type:	Planetary	No-Load Speed:	580 rpm (+/- 10%)
Motor Type:	Brushless (BLDC)	No-Load Current:	< 0.60 A
Rated Voltage:	24V DC	Stall Torque:	36 kg.cm
Rated Speed:	392 rpm	Stall Current:	12 A
Rated Torque:	10 kg.cm	Max. Power:	53 W
Rated Current:	3.35 A	Termination Style:	Lead Wires (26/20AWG)

Dimensions

+5V	RED	UL1007 26 AWG
HALL U	YEL	
HALL V	GRE	UL1007 20 AWG
HALL W	BLU	
GND	GND	
PHASE U	YEL	UL1007 20 AWG
PHASE V	GRE	
PHASE W	BLU	

Hall sensor cable
Note: hall sensor power supply voltage +5 to +20VDC

units: mm

