

# Accessories

## R95-110



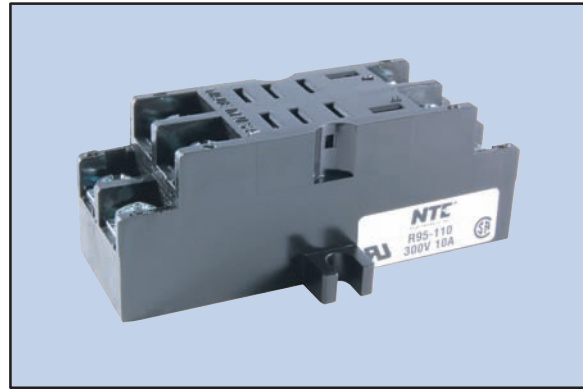
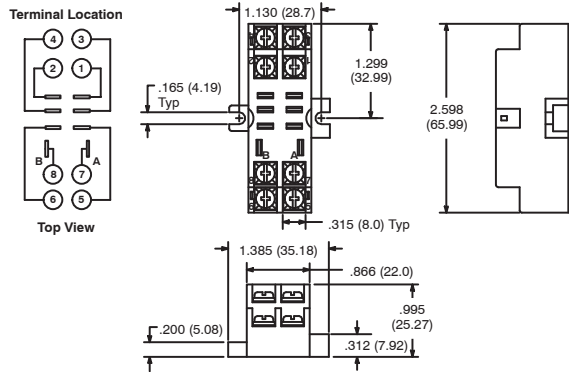
## 8-Pin Midget Blade Socket

### Features

- Panel/Surface Mount
- Pressure Clamp Screws
- Accepts .187" Blade Terminals
- Hold down clip supplied with socket, also available separately (R95-001)

### Electrical Rating:

300 Volts, 10 Amps



## R95-111



## 8-Pin Midget Blade Socket

### Features

- Panel Mount
- Solder Terminals
- Accept .187" Blade Terminals
- Hold down clip supplied with socket, also available separately (R95-001)

### Electrical Rating:

300 Volts, 10 Amps

