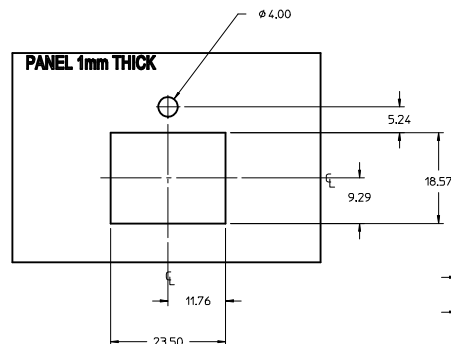
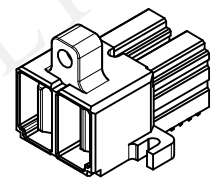
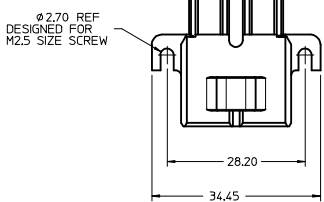


PART NUMBER	DIM "A" PC TAIL	DESCRIPTION
46817-1004	3.28±0.30	COMPLIANT PIN TERMINATION

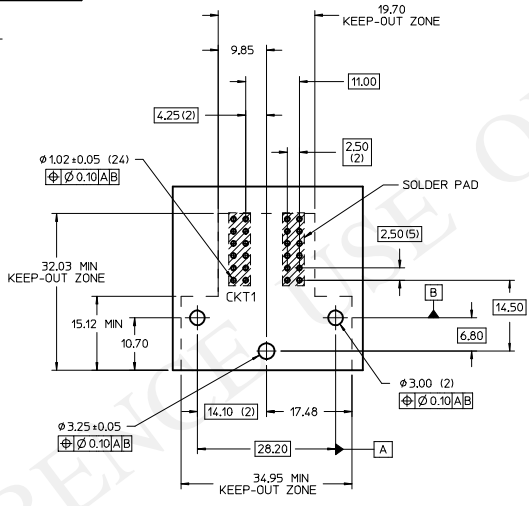


PANEL LAYOUT

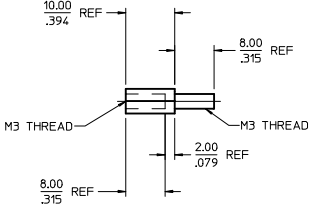
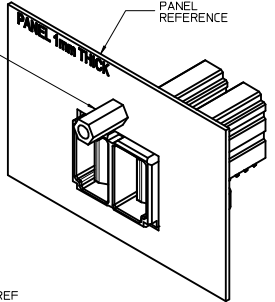
- NOTES:
- MATERIAL: HOUSING: 30% GF POLYESTER UL-94, V-0, TERMINALS: COPPER ALLOY
 - PLATING: TERMINALS: 30μ IN GOLD IN THE CONTACT AREA
100μ IN TIN IN THE PC TAIL AREA OVER
50μ IN NICKEL OVERALL
 - PRODUCT SPECIFICATION: PS-46819-001
 - PARTS ARE TRAY PACKED PER PACKAGING SPECIFICATION: PK-46817-002.
 - MATING HARNESS SERIES 68790
 - PC BOARD HOLES ARE FOR SOLDER TAIL TYPE TERMINALS
 - PC BOARD HOLES TO BE PLATED THRU HOLES



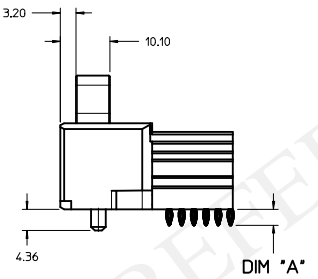
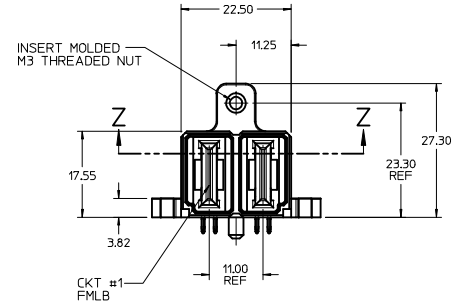
PART SUPPLIED AS SHOWN



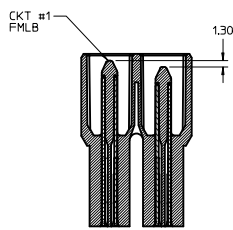
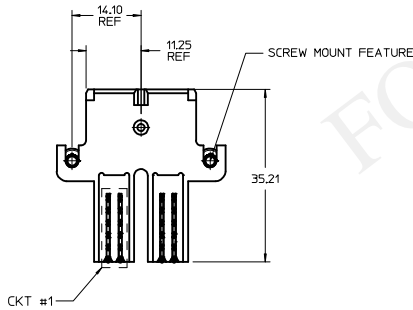
RECOMMENDED PCB LAYOUT (CONNECTOR SIDE)



RECOMMENDED M3 STAND-OFF FOR REFERENCE ONLY
MAY BE PURCHASED FROM HARDWARE VENDOR



DIM "A"



SECTION Z-Z

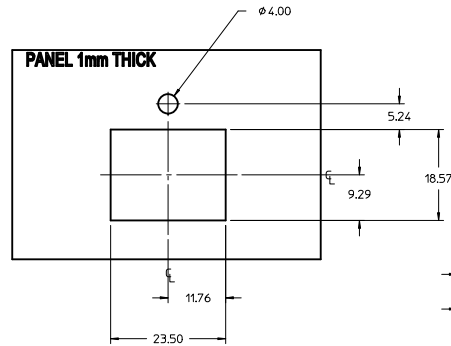
PROPOSAL IEC NO: UCF2016-3954 DRAWN: CGH CHKD: APPR: CGH REV:	QUALITY SYMBOLS ∇=0 ∇=0 ∇=0	GENERAL TOLERANCES (UNLESS SPECIFIED) <table border="1"> <thead> <tr> <th></th> <th>mm</th> <th>INCH</th> </tr> </thead> <tbody> <tr> <td>4 PLACES</td> <td>±0.10</td> <td>±0.004</td> </tr> <tr> <td>3 PLACES</td> <td>±0.15</td> <td>±0.006</td> </tr> <tr> <td>2 PLACES</td> <td>±0.25</td> <td>±0.010</td> </tr> <tr> <td>1 PLACE</td> <td>±0.50</td> <td>±0.020</td> </tr> </tbody> </table>		mm	INCH	4 PLACES	±0.10	±0.004	3 PLACES	±0.15	±0.006	2 PLACES	±0.25	±0.010	1 PLACE	±0.50	±0.020	DIMENSION STYLE MM ONLY	SCALE 2:1	DESIGN UNITS METRIC	THIRD ANGLE PROJECTION
		mm	INCH																		
	4 PLACES	±0.10	±0.004																		
	3 PLACES	±0.15	±0.006																		
2 PLACES	±0.25	±0.010																			
1 PLACE	±0.50	±0.020																			
DRAWN BY CGH	DATE 2016/04/09	CHECKED BY DATE	APPROVED BY CGH	DATE 2016/06/01	MATERIAL NO. SEE CHART	DOCUMENT NO. RSD-46817-1004															
DRAFT WHERE APPLICABLE MUST REMAIN WITHIN DIMENSIONS																					
THIS DRAWING CONTAINS INFORMATION THAT IS PROPRIETARY TO MOLEX INCORPORATED AND SHOULD NOT BE USED WITHOUT WRITTEN PERMISSION																					

GUARDIAN
PLUG ASSEMBLY
2 CKT PRESSFIT

MOLEX MOLEX INCORPORATED

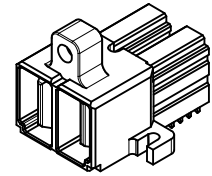
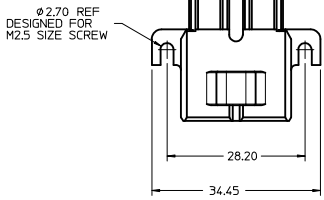
SHEET NO.
1 OF 1

PART NUMBER	DIM "A" PC TAIL	PC BOARD THICKNESS	DESCRIPTION
46817-1002	3.86±0.30	2.36	SHORT TAILS
46817-1003	4.69±0.30	3.18/3.60	LONG TAILS

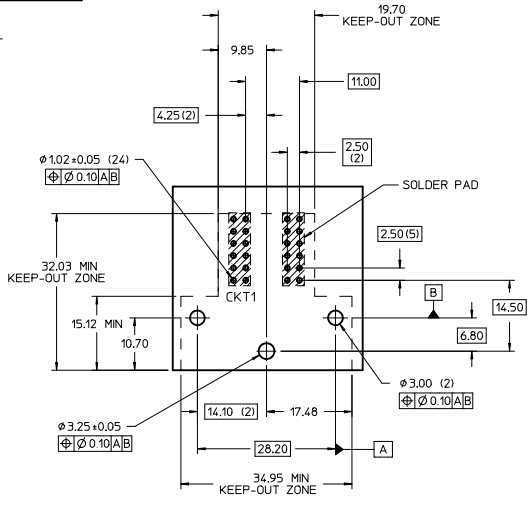


PANEL LAYOUT

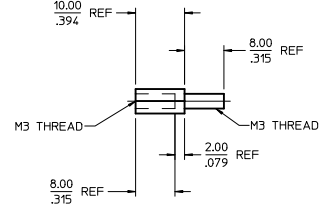
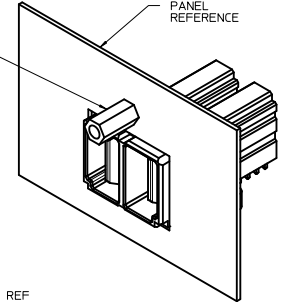
- NOTES:
- MATERIAL: HOUSING: 30% GF POLYESTER UL-94, V-0, TERMINALS: COPPER ALLOY
 - PLATING: TERMINALS: 30μ IN GOLD IN THE CONTACT AREA
100μ IN TIN IN THE PC TAIL AREA OVER
50μ IN NICKEL OVERALL
 - PRODUCT SPECIFICATION: PS-46819-001
 - PARTS ARE TRAY PACKED PER PACKAGING SPECIFICATION: PK-46817-002.
 - MATING HARNESS SERIES 68790
 - PC BOARD HOLES ARE FOR SOLDER TAIL TYPE TERMINALS
 - PC BOARD HOLES TO BE PLATED THRU HOLES



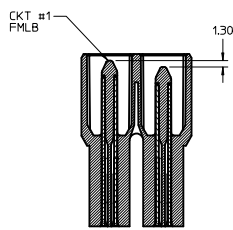
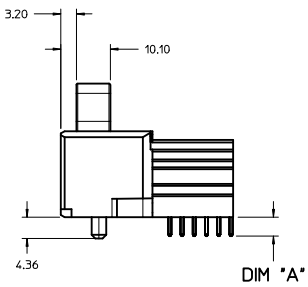
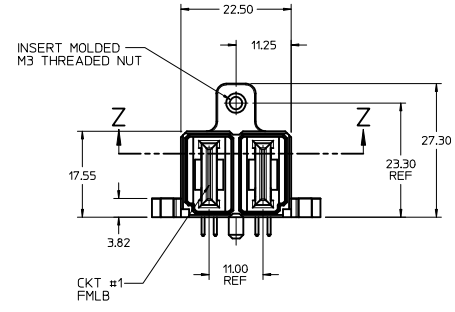
PART SUPPLIED AS SHOWN



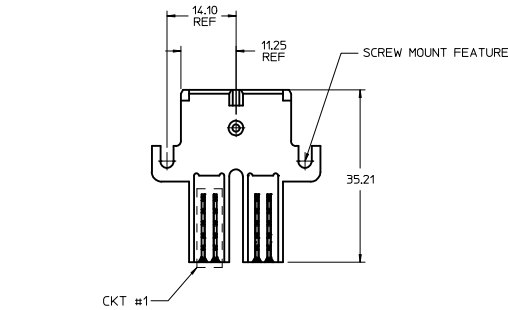
RECOMMENDED PCB LAYOUT (CONNECTOR SIDE)



RECOMMENDED M3 STAND-OFF FOR REFERENCE ONLY
MAY BE PURCHASED FROM HARDWARE VENDOR



SECTION Z-Z



REM P/NS/REV NOTES IEC NO. UCF2012-3786 DRAWN/OUTLES 2012/05/21 CHKD/MKARADI/MAS 2012/05/21 APPR/APATEL 2012/06/01	QUALITY SYMBOLS ∇=0 ∇=0 ∇=0	GENERAL TOLERANCES (UNLESS SPECIFIED)		DIMENSION STYLE MM ONLY		SCALE 2:1	DESIGN UNITS METRIC	THIRD ANGLE PROJECTION	
		4 PLACES ± --- ± --- 3 PLACES ± --- ± --- 2 PLACES ± 0.13 ± --- 1 PLACE ± 0.25 ± ---	mm INCH	DRAWN BY MKARADI/MAS	DATE 2010/07/13	TITLE GUARDIAN PLUG ASSEMBLY 2 CKT			
		DRAFT WHERE APPLICABLE MUST REMAIN WITHIN DIMENSIONS		APPROVED BY APATEL	DATE 2011/01/13	MOLEX INCORPORATED			
		MATERIAL NO. SEE CHART		DOCUMENT NO. SD-46817-1002		SHEET NO. 1 OF 1			