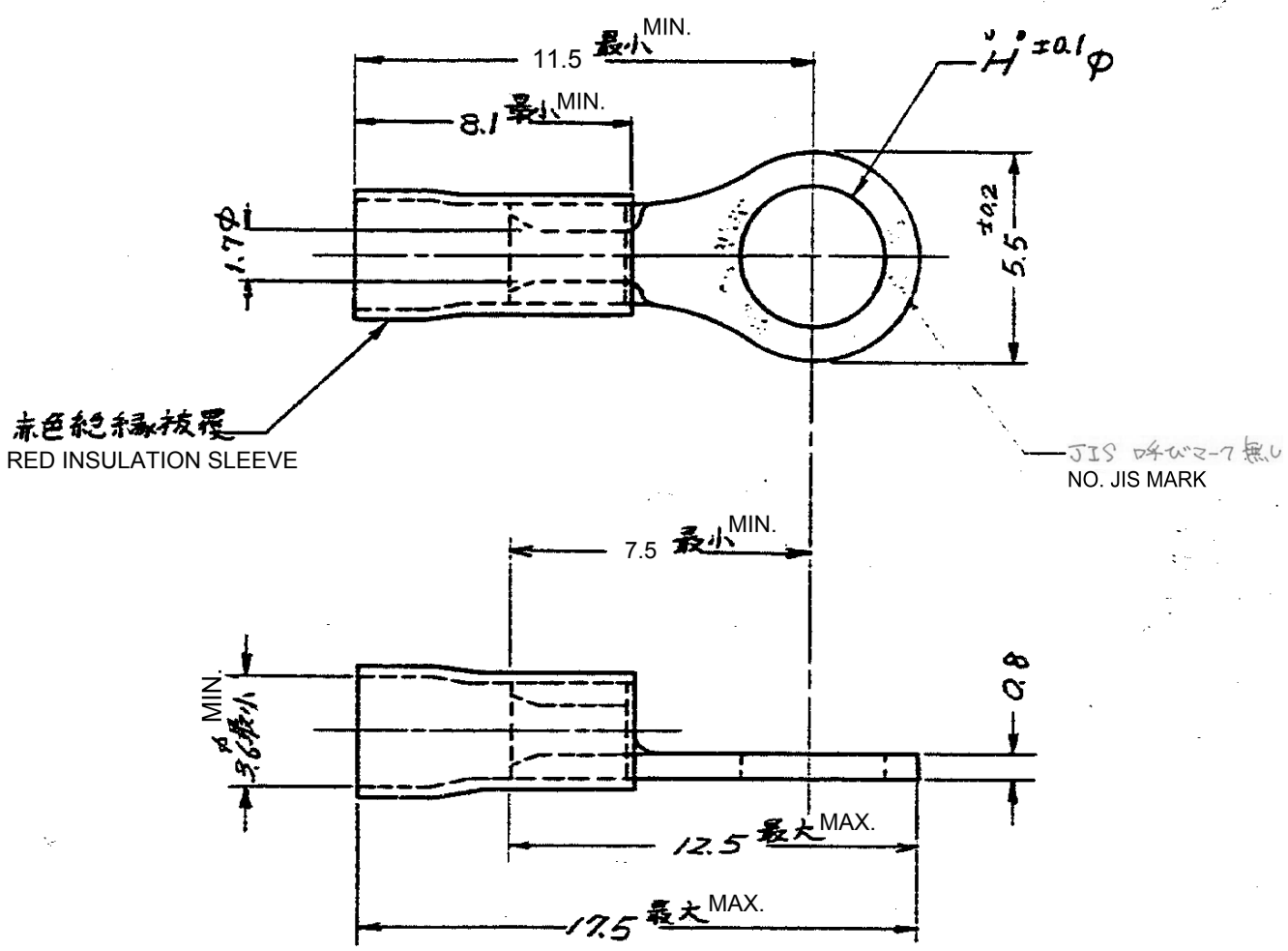


C-170780



PARTS NUMBER	CUSTOMER(JAPAN RAILWAY) SPEC	DIMENSION H	マーク
170780-1	ED 564465. PS 125-3	3.35	125-3

単位：mm DIMENSIONS IN MM. DO NOT SCALE PRINT

G	REVISED PER ECR-17-017886	E.T	N.Y	08DEC17
F	REVISED PER ECR-17-007891	T.G	N.Y	01MAY17
E	Change Applicable Body	Y.O	N.Y	23JAN17
D	ADDED MATL. FINISH	山崎 川口	11/17/17	
C	ADDED DIM'S	山崎 川口	11/17/17	
B	ADDED MARK	H.S	11/17/17	
A	REVISED (REV. A)	H.S	11/17/17	
D	RELEASED	山崎 川口	11/17/17	
4	LTR 変更 (REVISION RECORD)	DR.	CHK.	DATE
C	DR. 山崎 川口	DE	CHK. 山崎 川口	11/17/17

1975 BY AMP JAPAN, LTD. ALL RIGHTS RESERVED. AMP PRODUCTS COVERED BY PATENTS AND OR PATENTS PENDING

参考図面 (CUSTOMER COPY REFERENCE ONLY)

MATERIAL: COPPER 電気銅
FINISH: 焼鈍. 銅めっき ANNEAL TIN PLATING

WIRE RANGE: 0.26~1.04 mm AWG 22-18
INSULATION DIA.:

TE Connectivity

CLASS: 丸型 RING
TYPE: PLASTI-GRID プラスティ・グリッド

SCALE: 1:1
LOC: JAC-170780
SIZE: G

PG RING TERMINAL 絶縁被覆端子