

ITEM	PART#	DESCRIPTION	QTY	UOM
A	2004561216	Mega-fit Recep Hsg SR TopL 6ckt Blk	1	PC
B	1054150006	Mega-fit TPA 6ckt 94 V-0 Nat	1	PC
C	768230343	Mega-fit Female Tml Pre-Tin 12AWG	6	PC
D	--	PAPER PRINTED PAPER WHITE	1	PC

FROM	TO	DESCRIPTION	COLOR
A1	--	1X12AWG DISC PVC BK UL1015 HOOKUP	BLACK
A2	--	1X12AWG DISC PVC BK UL1015 HOOKUP	BLACK
A3	--	1X12AWG DISC PVC BK UL1015 HOOKUP	BLACK
A4	--	1X12AWG DISC PVC BK UL1015 HOOKUP	BLACK
A5	--	1X12AWG DISC PVC BK UL1015 HOOKUP	BLACK
A6	--	1X12AWG DISC PVC BK UL1015 HOOKUP	BLACK

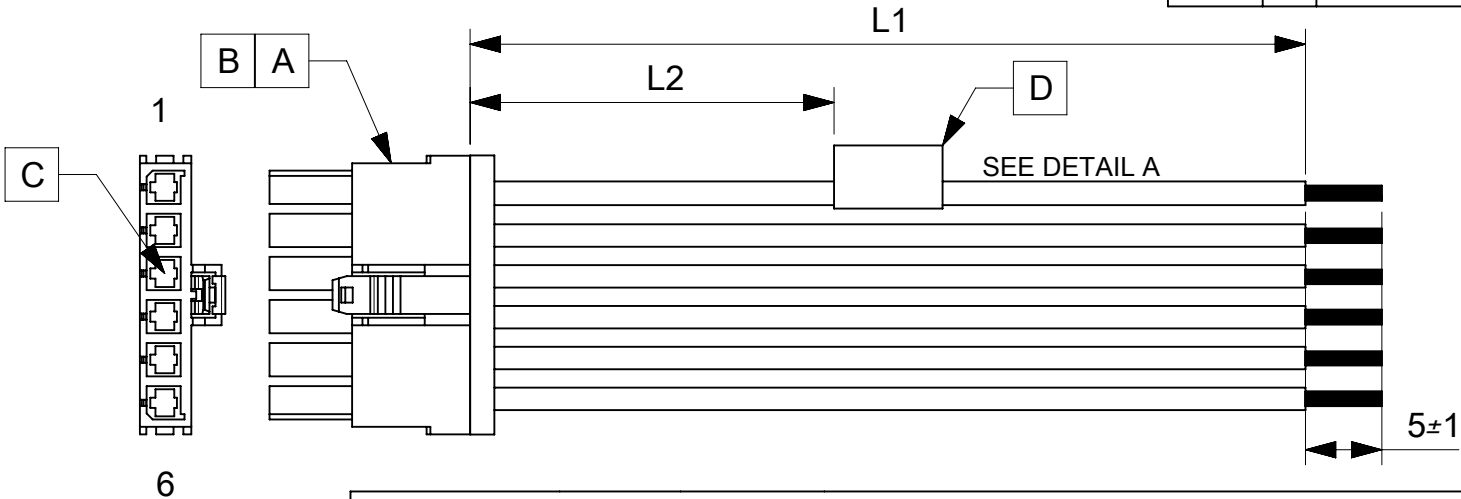


TABLE			
PART NUMBER	L1	L2	TITLE
2164011061	150±8	63REF	MEGAFIT SR R-S 6 CKT 150 MM CABLE ASSY
2164011062	300±10	138REF	MEGAFIT SR R-S 6 CKT 300 MM CABLE ASSY
2164011063	600±10	288REF	MEGAFIT SR R-S 6 CKT 600 MM CABLE ASSY

NOTES

1. Connector view shown is from mating side.
2. Free ends must be stripped, twisted & tinned. The length of tinning is 5±1mm. Tinning dia must be 3mm Max.
3. Label text must be 2mm max. in height with Arial font.
4. Label must be wrapped in Flag type on a single cable.

MOLEX P/N
MOLEX
BATCH WK/YR

DETAIL A

REVISION			
DATE	REV	DESCRIPTION	CHANGER
17/06/2020	A	INITIAL RELEASE	ARAJU

FUNCTIONAL SYMBOLS $\frac{F}{A} = 0$ $\frac{F}{E} = 0$ $\frac{F}{P} = 0$ DIVISIONAL SYMBOLS	DIMENSION UNITS: mm SCALE: NTS CURRENT REV DESC: EC NO: 643477 DRWN: ARAJU 2020/06/17 CHK'D: RDESAI01 2020/08/17 APPR: RDESAI01 2020/08/17							
	GENERAL TOLERANCES (UNLESS SPECIFIED) ANGULAR TOL ± ° 4 PLACES ± 3 PLACES ± 2 PLACES ± 1 PLACE ± 0 PLACES ±				INITIAL REVISION: DRWN: ARAJU 2020/06/17 APPR: RDESAI01 2020/08/17	PRODUCT CUSTOMER DRAWING		
	DRAFT WHERE APPLICABLE MUST REMAIN WITHIN DIMENSIONS	THIRD ANGLE PROJECTION	DRAWING: A4-SIZE	SERIES: 216401	DOCUMENT NUMBER: 2164011061	DOC TYPE: PSD	DOC PART: 000	REVISION: A
	MATERIAL NUMBER: SEE TABLE	CUSTOMER: GENERAL MARKET	SHEET NUMBER: 1 OF 1					

DOCUMENT STATUS	P1	RELEASE DATE	2020/08/17	11:01:44
-----------------	----	--------------	------------	----------