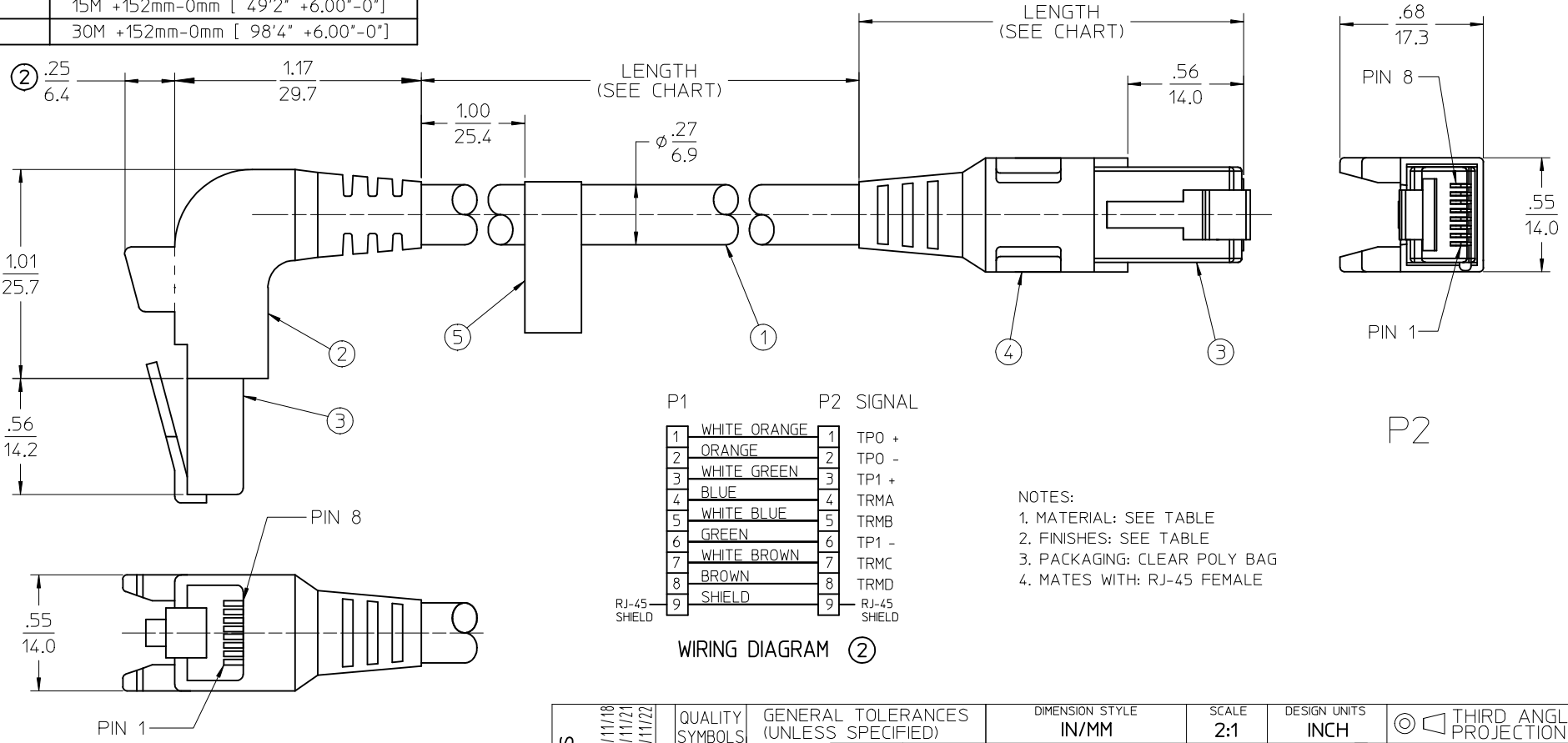


MATERIAL NO.	LENGTH
849019011	.6M +13mm-0 [ 2'0" +.50"-0"]
849019012	2M +42mm-0mm [ 6'7" +1.65"-0"]
849019013	5M +102mm-0mm [ 16'5" +4.00"-0"]
849019014	10M +152mm-0mm [ 32'10" +6.00"-0"]
849019015	15M +152mm-0mm [ 49'2" +6.00"-0"]
849019016	30M +152mm-0mm [ 98'4" +6.00"-0"]



NOTES:  
 1. MATERIAL: SEE TABLE  
 2. FINISHES: SEE TABLE  
 3. PACKAGING: CLEAR POLY BAG  
 4. MATES WITH: RJ-45 FEMALE

ITEM	QTY	DESCRIPTION	MATERIAL	FINISH
5	1	LABEL	MYLAR	BLACK/CHROME
4	1	OVERMOLD, STRAIGHT, BLACK	PVC	BLACK
3	2	RJ-45 PLUG, SHIELDED	PH. BRNZ. CONT.	GOLD PLATED
2	A/R	OVERMOLD, 90 DEG.	PVC	BLACK
1	1	CABLE, 4P, SHIELDED	PVC JACKET	TEAL

<b>ADDED GULLWINGS</b> EC NO: ETC2006-0080 DR: W/STONE 2005/11/18 CHKDR: DEROSS 2005/11/21 APPR: DEROSS 2005/11/22	QUALITY SYMBOLS ▽=0 ▽=0	GENERAL TOLERANCES (UNLESS SPECIFIED) <table border="1"> <thead> <tr> <th></th> <th>mm</th> <th>INCH</th> </tr> </thead> <tbody> <tr> <td>4 PLACES</td> <td>±---</td> <td>±---</td> </tr> <tr> <td>3 PLACES</td> <td>±---</td> <td>±.005</td> </tr> <tr> <td>2 PLACES</td> <td>±0.13</td> <td>±.01</td> </tr> <tr> <td>1 PLACE</td> <td>±0.25</td> <td>±---</td> </tr> </tbody> </table>			mm	INCH	4 PLACES	±---	±---	3 PLACES	±---	±.005	2 PLACES	±0.13	±.01	1 PLACE	±0.25	±---	DIMENSION STYLE <b>IN/MM</b>	SCALE <b>2:1</b>	DESIGN UNITS <b>INCH</b>	THIRD ANGLE PROJECTION
			mm	INCH																		
4 PLACES	±---	±---																				
3 PLACES	±---	±.005																				
2 PLACES	±0.13	±.01																				
1 PLACE	±0.25	±---																				
DRAFT WHERE APPLICABLE MUST REMAIN WITHIN DIMENSIONS	DRAWN BY R. STONE	DATE 09-23-05	CHECKED BY R. DEROSS	DATE 10-25-05	<b>CORD ASSEMBLY, 90 DEG RJ-45 TO RJ-45 STRAIGHT</b>																	
MATERIAL NO. <b>SD-84901-019</b>	APPROVED BY R. DEROSS	DATE 10-25-05	<b>MOLEX INCORPORATED</b>		DOCUMENT NO. <b>SD-84901-019</b>	SHEET NO. <b>1 OF 1</b>																
THIS DRAWING CONTAINS INFORMATION THAT IS PROPRIETARY TO MOLEX INCORPORATED AND SHOULD NOT BE USED WITHOUT WRITTEN PERMISSION																						