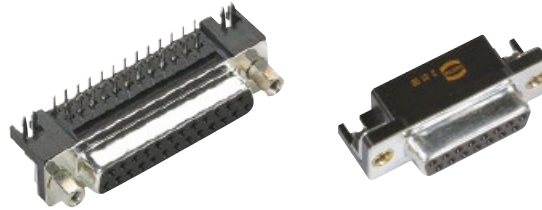
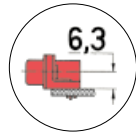


U.S. Footprint

Number of contacts

Mounting height

9–37



Stamped solder pins, angled with snap-in-clips and grounding board locks

Identification	No. of contacts	Part number	
Performance levels Explanations see page 05.04 Other performance levels on request		Performance level 3	S4 ¹⁾
Male connector metal shell with dimples	9 15 25 37	2.84 mm pitch 09 68 163 781 . 09 68 263 781 . 09 68 363 781 . 09 68 463 781 .	2.84 mm pitch 09 68 163 581 . 09 68 263 581 . 09 68 363 581 . 09 68 463 581 .
Female connector metal shell	9 15 25 37	2.84 mm pitch 09 68 153 761 . 09 68 253 761 . 09 68 353 761 . 09 68 453 761 .	2.84 mm pitch 09 68 153 561 . 09 68 253 561 . 09 68 353 561 . 09 68 453 561 .
Please insert digit for flange thread or fitted female screw locks			
	M3 ▶ 1 ²⁾ 4-40 UNC ▶ 2 fitted screw locks 4-40 UNC ▶ 3		

D-Sub

¹⁾ S4 = 0.76 µm (30 µinch) Au or PdNi equivalent

²⁾ Not normally kept in stock