



# Product Change Notification

## TE Connectivity

**Product Change Notification:** PCN-22-133688

**PCN Date:** 29-MAR-22

TE would like to inform you of the following change(s) to the listed TE Connectivity Product. In case of any further questions about this change(s), please contact your TE Connectivity Sales Engineer. Affected part, drawing and/or specification numbers are listed on the attached sheet(s).

**General Product Description:**

D2100 REC HOUSING

**Description of Changes**

A minor appearance change for process optimization without any performance impact. PN:1-1318118-9/2-1318118-9/3-1318118-9/9-1318118-9 ,Because the new and old molds will be produced at the same time, the two appearance products will exist at the same time Before Two Sink mark in latch face & without two Square holes in Terminal insertion face After Add two Square holes in Terminal insertion face to improve Sink mark in latch face As annex

**Other attachments:**

[D2100 REC Housing's appearance difference of new & existing tool](#)

**Reason for Changes:**

**PCN Attributes:**

**Product Category:**

Connector Housings

**Kind of Change:**

Revision Adjustment / Part Clarification

**Change Feature:**

Clarification/Correction

**Potential Customer Impact:**

No Customer Impact

**Remarks:**

D2100 REC HOUSING

**Estimated Dates:**

<b>Last Order Date</b> (Obsolete Parts Only):	<b>First Ship Date of Changed Items</b> (Changed Parts Only):
	30-MAR-2022
<b>Last Ship Date of Changed Items</b> (Obsolete Parts Only):	<b>Last Date for Mixed Shipments:</b> (Changed Parts Only):
	No Mixed Shipments
<b>Effectivity Date:</b>	<b>Date of First Samples:</b>

**Part Number(s) being Modified:**

Part Number	Part Discontinued per PCN	Customer Drawing	Customer Part Number	Alias Part Number(s)	Substitute Part Number	Substitute Alias Part Number(s)	Description Of Difference
<a href="#">1-1318118-9</a>	NO						
<a href="#">2-1318118-9</a>	NO						

**Part Number(s) being Modified:**

Part Number	Part Discontinued per PCN	Customer Drawing	Customer Part Number	Alias Part Number(s)	Substitute Part Number	Substitute Alias Part Number(s)	Description Of Difference
<a href="#">2-1318118-9</a>	NO						

**Part Number(s) being Modified:**

Part Number	Part Discontinued per PCN	Customer Drawing	Customer Part Number	Alias Part Number(s)	Substitute Part Number	Substitute Alias Part Number(s)	Description Of Difference
<a href="#">1-1318118-9</a>	NO						
<a href="#">2-1318118-9</a>	NO						

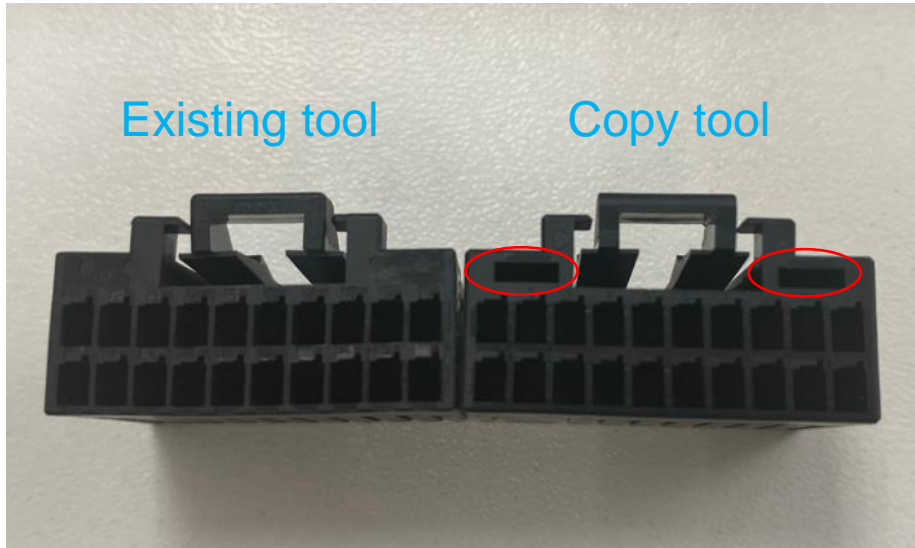


# D2100 REC Housing's appearance difference of new & existing tool

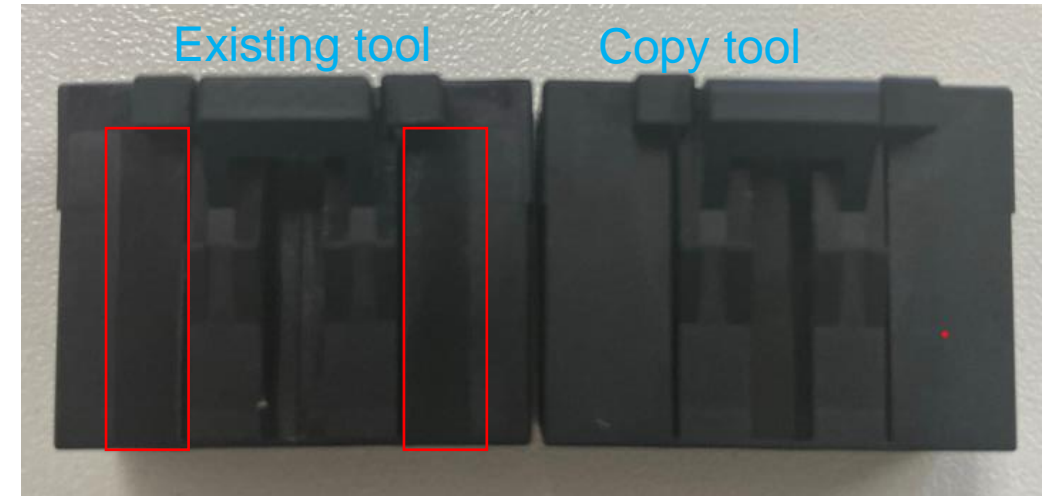
---



EVERY CONNECTION COUNTS



As the red mark , Two square holes are added to the copy die for solve the problem of product sink mark.



As the red mark , sink mark of molding before change