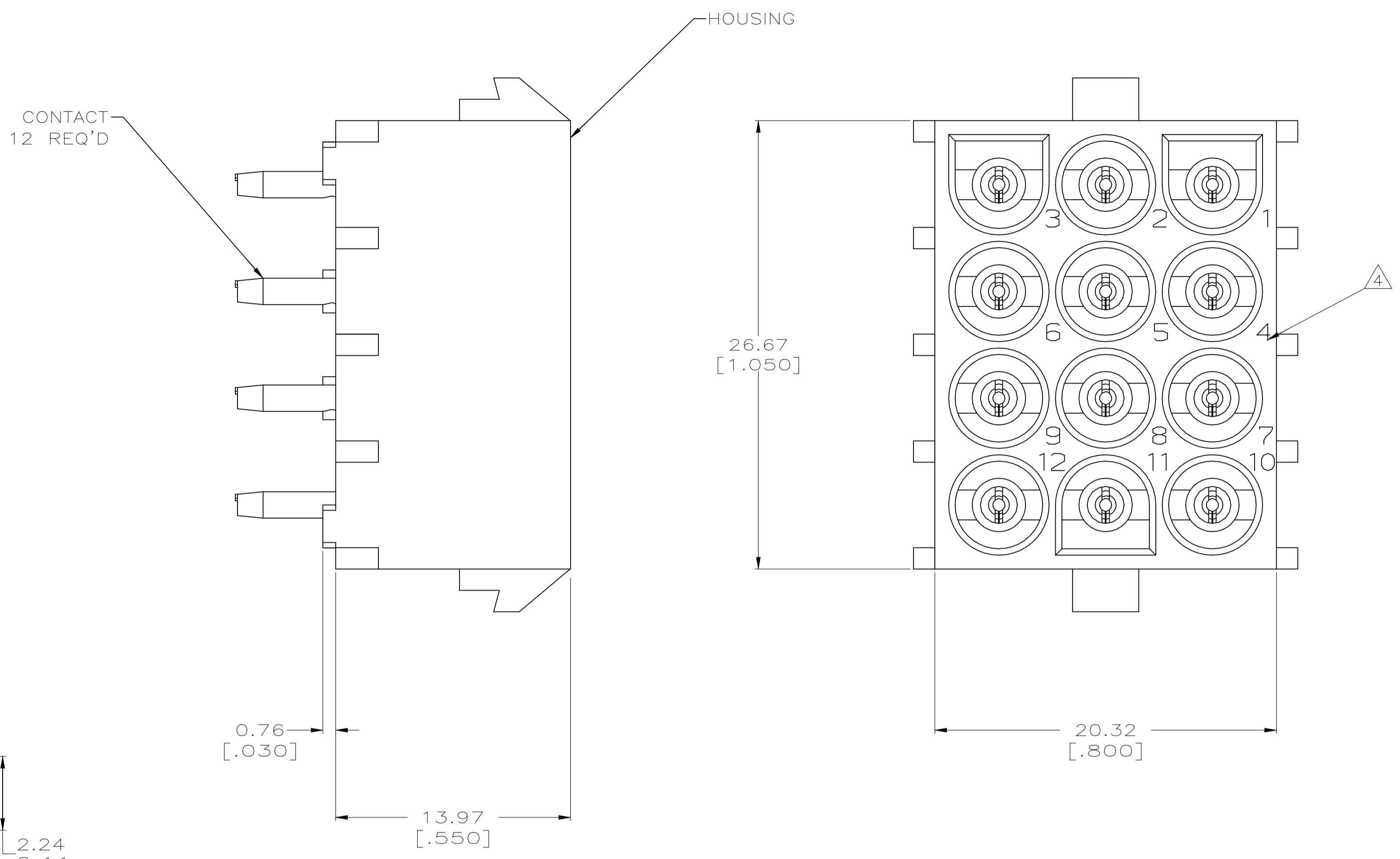
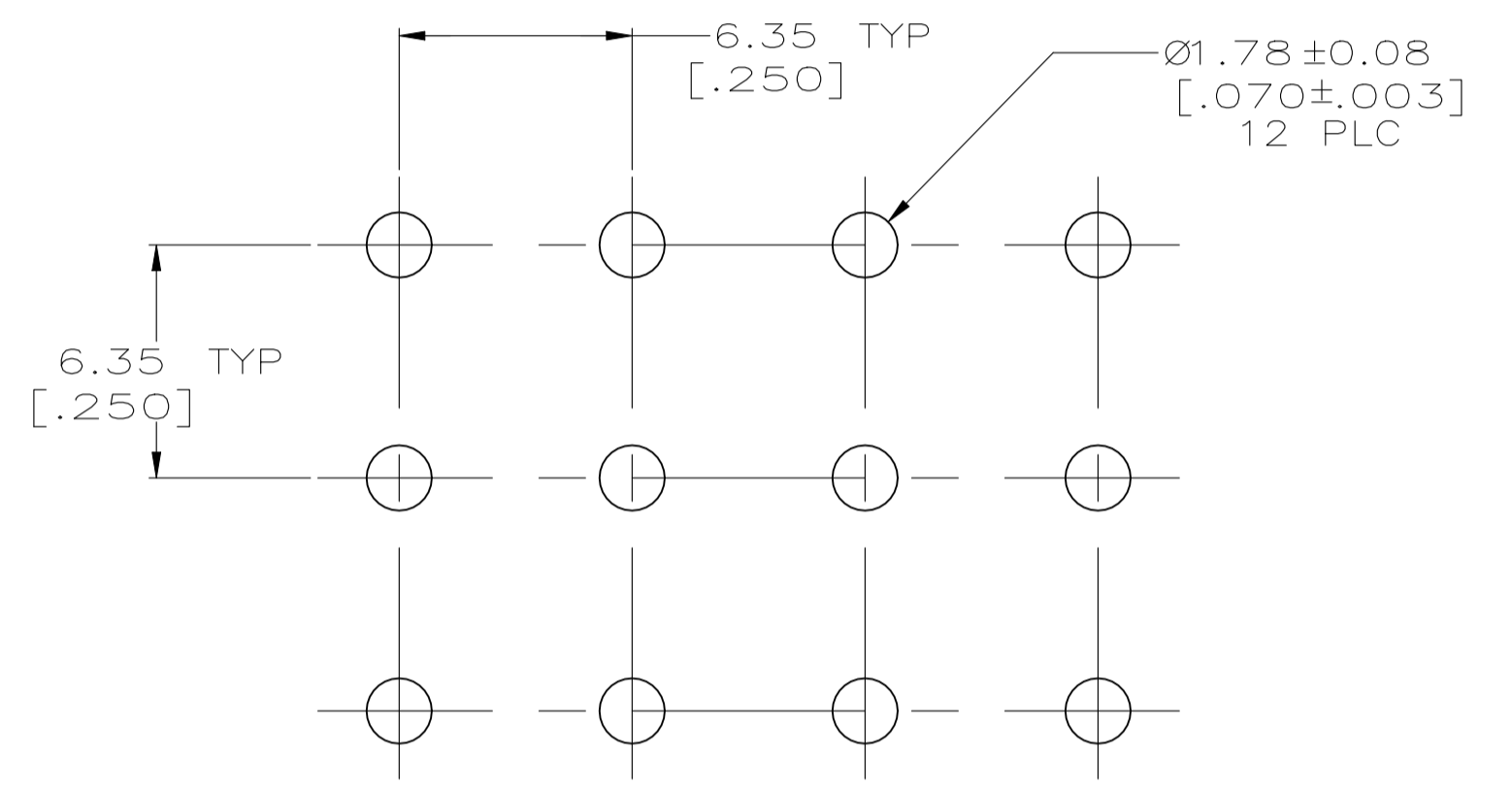


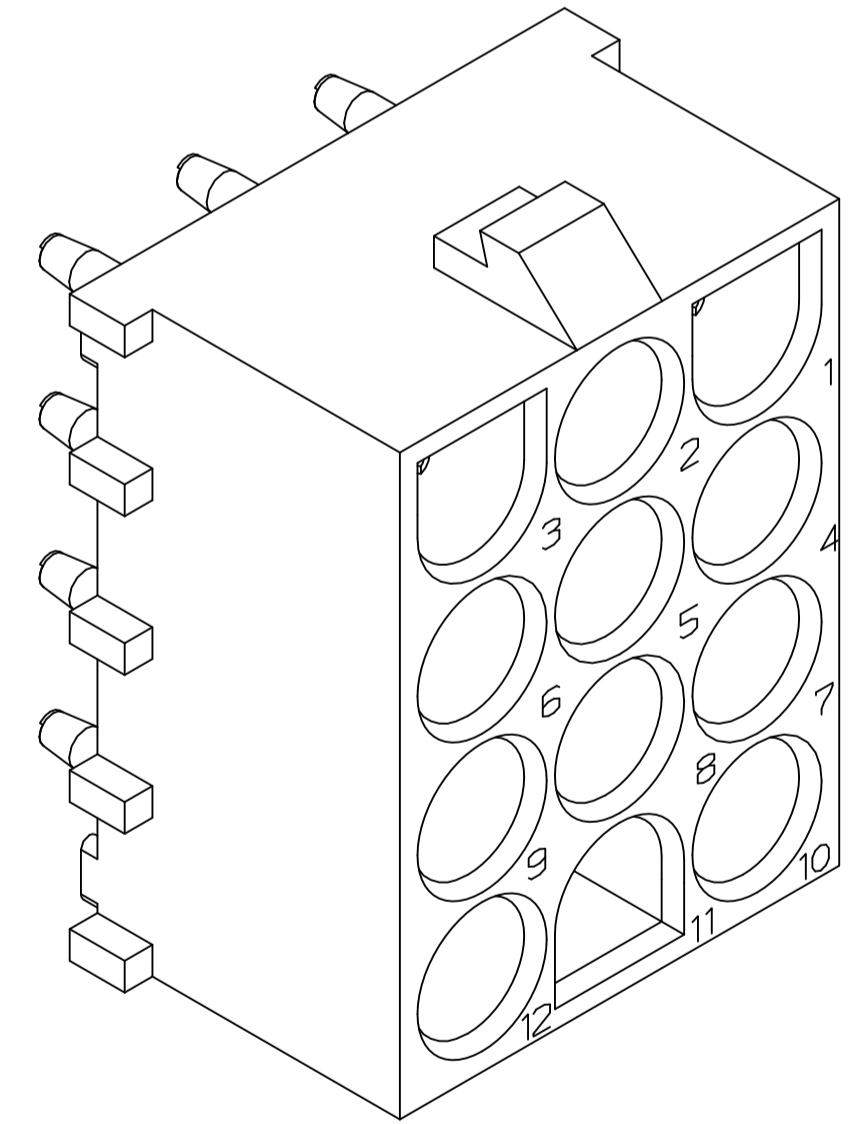
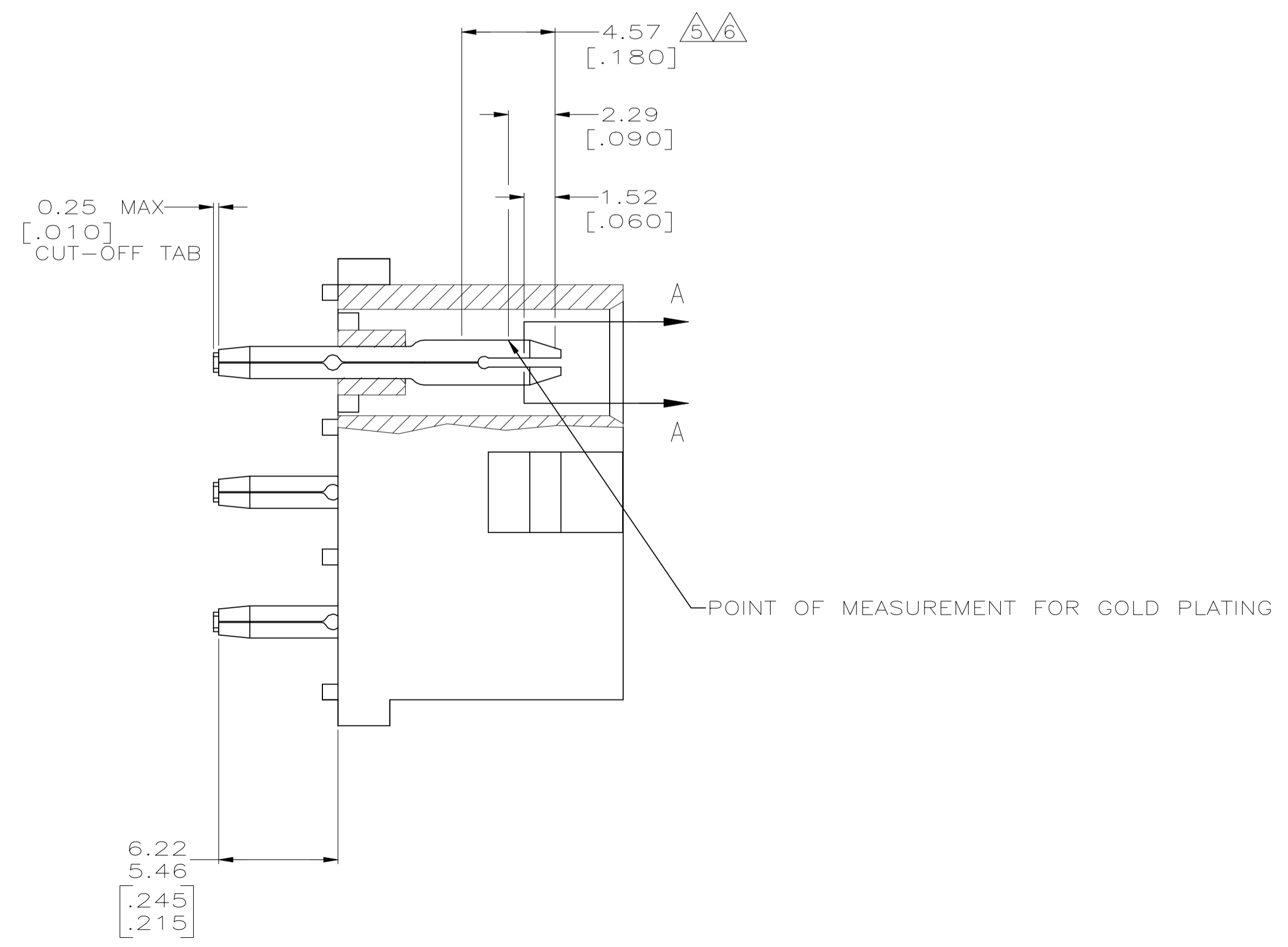
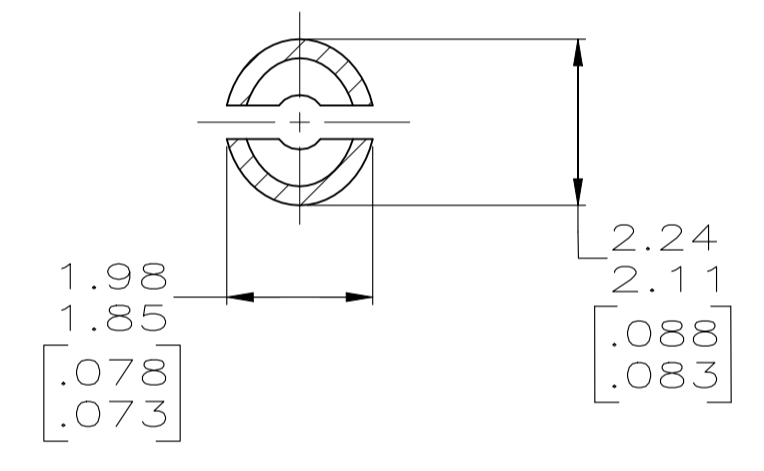
REVISIONS					
REV	DESCRIPTION	DATE	BY	APP'D	
T3	REVISED PER ECR-21-119230	02NOV2021	SS	VS	



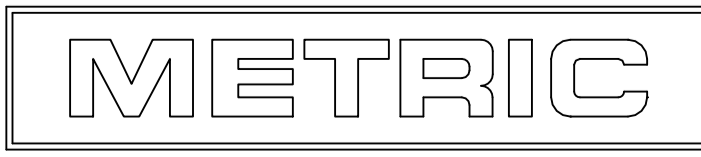
- PARTS COMPLY WITH TE SOLDERABILITY SPECIFICATION 109-11-3.
- MATES WITH 480708 USING SOCKET CONTACTS.
- DIMENSIONS IN BRACKETS ARE IN INCHES.
- CIRCUIT IDENTIFICATION CHARACTERS ARE ADJACENT TO THE INDICATED CAVITIES, BUT LOCATION AND ORIENTATION MAY DIFFER FROM PRINT.
- CONTACT IS PLATED OVERALL WITH 0.00127[.000050] NICKEL, THEN 0.00076[.000030] GOLD OVER CONTACT LENGTH INDICATED AND MATTE TIN LEAD ON SOLDER TAIL END.
- CONTACT IS PLATED OVERALL WITH 0.00127[.000050] NICKEL, THEN 0.00076[.000030] GOLD OVER CONTACT LENGTH INDICATED AND MATTE TIN ON SOLDER TAIL END.
- OBSOLETE PARTS: OBSOLETE CIS STREAMLINING PER D.RENAUD/D.SINISI
- DIMENSIONS SHOWN REPRESENT PRODUCT IN DRY CONDITION. ADDITIONAL 2% GROWTH DUE TO END USE LOCATION MOISTURE ABSORPTION MAY OCCUR AND SHOULD BE ACCOUNTED FOR.



RECOMMENDED MOUNTING HOLE PATTERN FOR A 3.18 [.125] THK P.C. BOARD



7	OBSOLETE	PH BRZ	6	NYLON, UL94V-2	NATURAL	-350587-4-
7	OBSOLETE	PH BRZ	5	NYLON, UL94V-2	NATURAL	-350587-2-
		PH BRZ	PRE-TIN	NYLON, UL94V-2	NATURAL	350587-1
		MATERIAL	FINISH	MATERIAL	COLOR	PART NO



THIS DRAWING IS A CONTROLLED DOCUMENT.		DIN K. WHITAKER 1-19-98	TE Connectivity	
DIMENSIONS: mm [INCHES]		CHK R. SWING 1-19-98	NAME PIN HEADER ASSEMBLY, 12 CIRCUIT, UNIVERSAL MATE-N-LOK™	
TOLERANCES UNLESS OTHERWISE SPECIFIED:		APVD M. TRULL 1-19-98	PRODUCT SPEC 108-1053	
0. PLC ± -		APPLICATION SPEC 114-1010	SIZE A1	CAGE CODE 00779
1. PLC ± -		WEIGHT 0.000000	SCALE 5:1	SHEET 1 of 1
2. PLC ± 0.13[.005]		CUSTOMER DRAWING	REV T3	
3. PLC ± -				
4. PLC ANGLES ± -				
MATERIAL SEE TABLE		FINISH SEE TABLE		