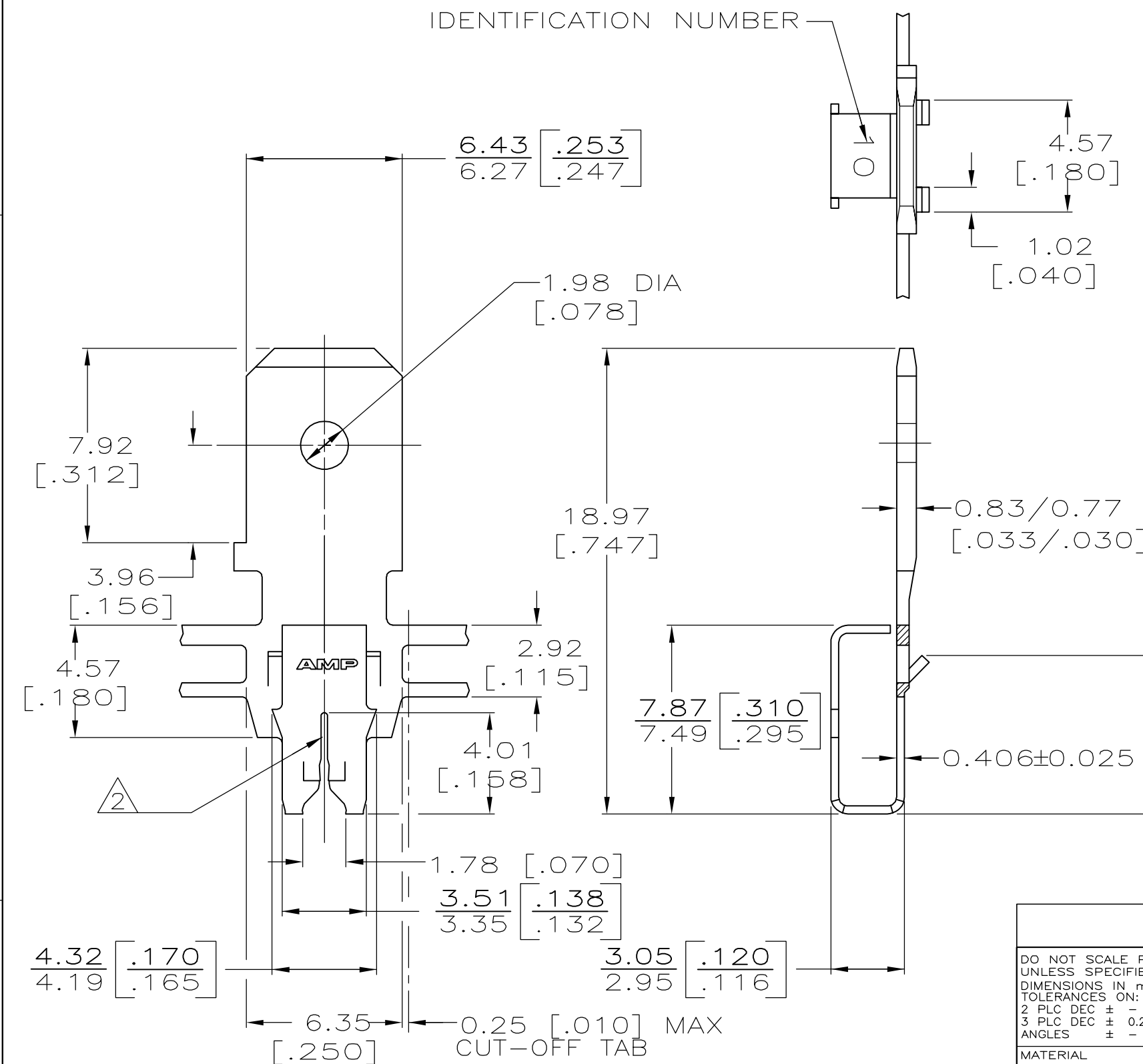


THIS DRAWING IS UNPUBLISHED. RELEASED FOR PUBLICATION, 19
 © COPYRIGHT 19 BY AMP INCORPORATED. ALL INTERNATIONAL RIGHTS RESERVED.

LOC	DIST	P	F	REVISIONS				
AF	50			ZONE	LTR	DESCRIPTION	DATE	APPD
					E	REV PER ECR 06-010492	02OCT06	JR/KR



- 1 CONTINUOUS STRIP ON REELS WITH TERMINALS LOCATED ON 8.38 [.330] CENTERS.
- 2 SLOT TERMINATES EITHER SINGLE OR DOUBLE MAGNET WIRES OF THE SAME TYPE AND SIZE, COPPER RANGE IS 0.36-0.57mm [#27-#23] AWG

METRIC

	082 PRE-MILLED BRASS	63571-2
	4M PRE-MILLED BRASS	63571-1
	MATERIAL	PART NO
DO NOT SCALE PRINT. UNLESS SPECIFIED DIMENSIONS IN mm [INCHES] TOLERANCES ON: 2 PLC DEC ± - 3 PLC DEC ± 0.25 [.010] ANGLES ± -	DR DK SCHRUM 2/8/90 CHK MS FEHER 2/9/90 APPD DF DECKER 2/9/90 APPD TL SHUTTER 2/12/90	AMP INCORPORATED Harrisburg, Pa. 17105
MATERIAL SEE TABLE	PRODUCT SPEC -	NAME TAB, 6.35 [.250] FASTON,™ MAG-MATE™
FINISH 0.002032 [.000080] MIN TIN PER MIL-T-10727	APPLICATION SPEC 114-2094	SIZE B FSCM NO 00779 DRAWING NO 63571
	WEIGHT -	SCALE 5:1 SHEET 1 OF 1