

Change Notice

M2100 Series

Change to Green LED Specifications for M2100 Toggles & Rockers

Type of Change:

- Engineering Part Number
 Product Appearance

1. The M2100 Toggles and Rockers will have changes to the specifications for single color Green (F) LEDs. The changes will effect all of the switches, both standard and custom. The specification changes are outlined below, followed by effected standard part numbers.



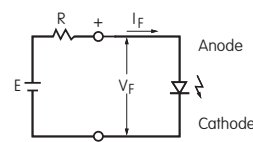
M2100 Series

LED COLOR & SPECIFICATIONS

The electrical specifications shown are determined at a basic temperature of 25°C. The LED is an integral part of the switch and is not available separately.		Before Change	After Change
		Green F	Green F
Maximum Forward Current	I_{FM}	30mA	30mA
Typical Forward Current	I_F	20mA	20mA
Forward Voltage	V_F	2.1V	2.2V
Maximum Reverse Voltage	V_{RM}	4V	4V
Current Reduction Rate Above 25°C	ΔI_F	0.40 mA/°C	0.38 mA/°C
Ambient Temperature Range		-10 ~ +55 °C	-10 ~ +55 °C

Notes

- The LED circuit is isolated and requires an external power source.
- If the source voltage exceeds the rated voltage, a ballast resistor is required. The resistor value can be calculated by using the formula shown here.
- The changes to LED specifications do not effect any external dimensions of the switches.
- Contact the factory if further details are needed.



$$R = \frac{E - V_F}{I_F}$$

Where: R = Resistor Value (Ohms)
 E = Source Voltage (V)
 V_F = Forward Voltage (V)
 I_F = Forward Current (A)

M2100 TOGGLES EFFECTED BY REVISIONS

M2112LFW01/M	M2112LFW02/M	M2112LFW03/M	M2112LFW01	M2112LFW02	M2112LFW03	M2112LFG30
M2112TFW01/M	M2112TFW02/M	M2112TFW03/M	M2112TFW01	M2112TFW02	M2112TFW03	M2112TFG30
M2113LFW01/M	M2113LFW02/M	M2113LFW03/M	M2113LFW01	M2113LFW02	M2113LFW03	M2113LFG30
M2113TFW01/M	M2113TFW02/M	M2113TFW03/M	M2113TFW01	M2113TFW02	M2113TFW03	M2113TFG30

M2100 ROCKERS EFFECTED BY REVISIONS

M2112NFW01	M2112NFW02	M2112NFW03	M2112NFW13
M2112RFW01	M2112RFW02	M2112RFW03	M2112RFW13
M2113NFW01	M2113NFW02	M2113NFW03	M2113NFW13
M2113RFW01	M2113RFW02	M2113RFW03	M2113RFW13

Effective Date

Changes to Green (F) LEDs for M2100 Series will be effective November 2016.

NKK
SWITCHES

<http://www.nkkswitches.com> • 1.877.2BUYNKK (228.9655)

7850 East Gelding Drive • Scottsdale, AZ 85260 • Telephone 480.991.0942 • Fax 480.998.1435

Change Notice

M2100 Series

Change to Red LED Specifications for M2100 Toggles & Rockers

Type of Change:

- Engineering Part Number
 Product Appearance

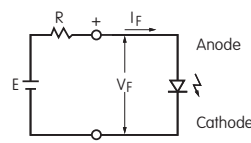
2. The M2100 Toggles and Rockers will have changes to the specifications for single color Red (C) LEDs. The changes will effect all of the switches, both standard and custom. The specification changes are outlined below, followed by effected standard part numbers.

LED COLOR & SPECIFICATIONS

The electrical specifications shown are determined at a basic temperature of 25°C. The LED is an integral part of the switch and is not available separately.		Before Change	After Change
Color		Red C	Red C
Maximum Forward Current	I_{FM}	25mA	30mA
Typical Forward Current	I_F	20mA	20mA
Forward Voltage	V_F	2.1V	2.2V
Maximum Reverse Voltage	V_{RM}	4V	4V
Current Reduction Rate Above 25°C	ΔI_F	0.33 mA/°C	0.38 mA/°C
Ambient Temperature Range		-10 ~ +55 °C	-10 ~ +55 °C

Notes

- The LED circuit is isolated and requires an external power source.
- If the source voltage exceeds the rated voltage, a ballast resistor is required. The resistor value can be calculated by using the formula shown here.
- The changes to LED specifications do not effect any external dimensions of the switches.
- Contact the factory if further details are needed.



$$R = \frac{E - V_F}{I_F}$$

Where: R = Resistor Value (Ohms)
 E = Source Voltage (V)
 V_F = Forward Voltage (V)
 I_F = Forward Current (A)

M2100 TOGGLES EFFECTED BY REVISIONS

M2112LCW01/M	M2112LCW02/M	M2112LCW03/M	M2112LCG30
M2112TCW01/M	M2112TCW02/M	M2112TCW03/M	M2112TCG30
M2113LCW01/M	M2113LCW02/M	M2113LCW03/M	M2113LCG30
M2113TCW01/M	M2113TCW02/M	M2113TCW03/M	M2113TCG30
M2112LCW01	M2112LCW02	M2112LCW03	
M2112TCW01	M2112TCW02	M2112TCW03	
M2113LCW01	M2113LCW02	M2113LCW03	
M2113TCW01	M2113TCW02	M2113TCW03	

M2100 ROCKERS EFFECTED BY REVISIONS

M2112NCW01	M2112NCW02	M2112NCW03	M2112NCW13
M2112RCW01	M2112RCW02	M2112RCW03	M2112RCW13
M2113NCW01	M2113NCW02	M2113NCW03	M2113NCW13
M2113RCW01	M2113RCW02	M2113RCW03	M2113RCW13

Effective Date

Changes to Red (C) LEDs for M2100 Series will be effective March 2017.

NIKK
SWITCHES

<http://www.nkkswitches.com> • 1.877.2BUYNKK (228.9655)

7850 East Gelding Drive • Scottsdale, AZ 85260 • Telephone 480.991.0942 • Fax 480.998.1435