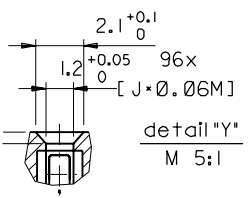
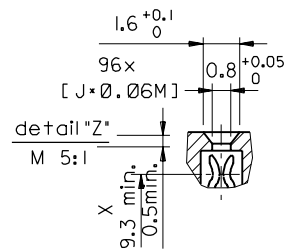
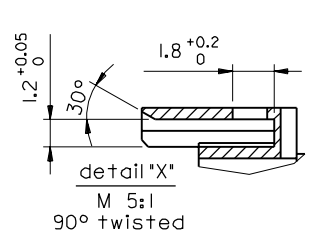
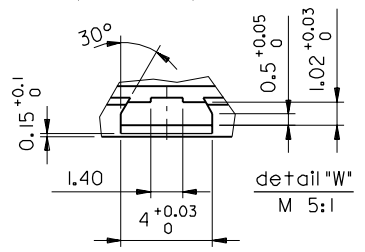
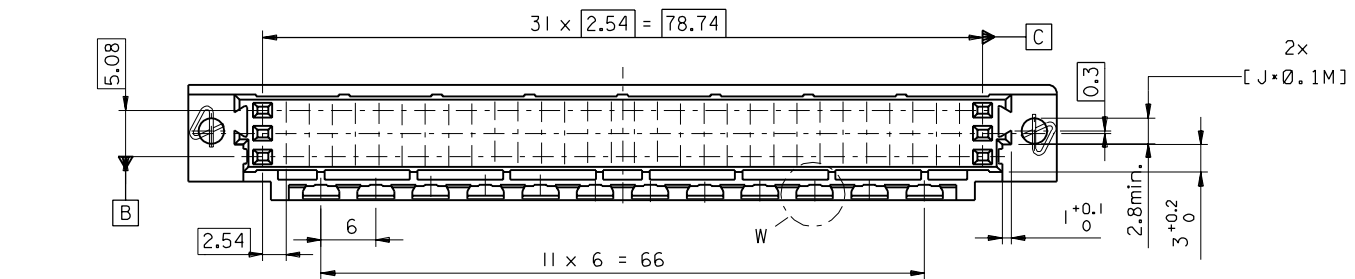
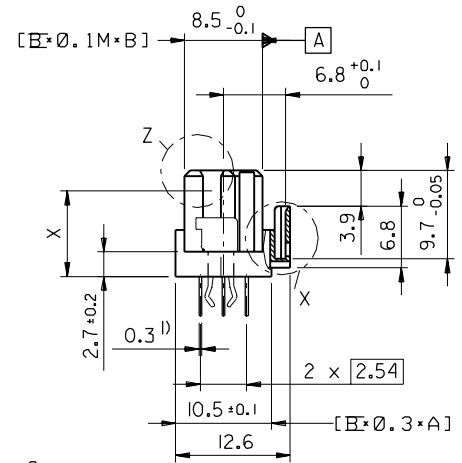
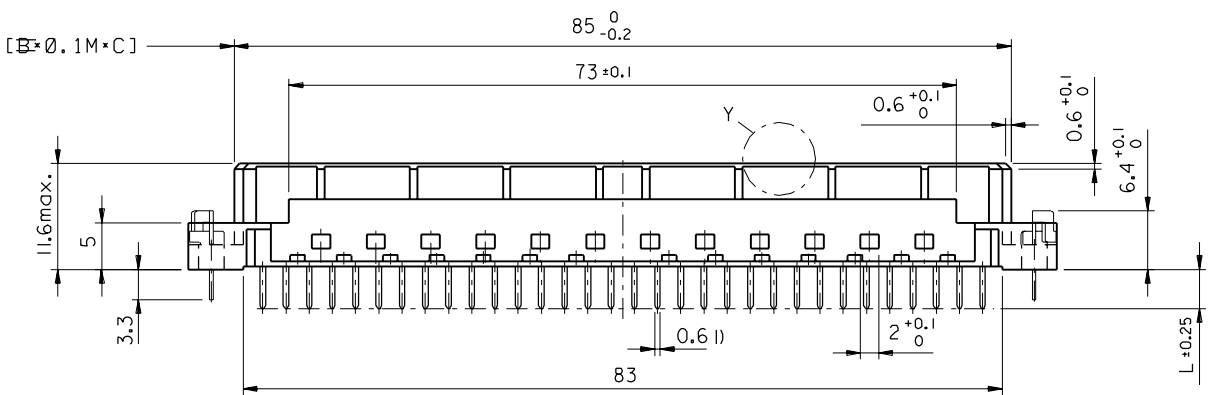


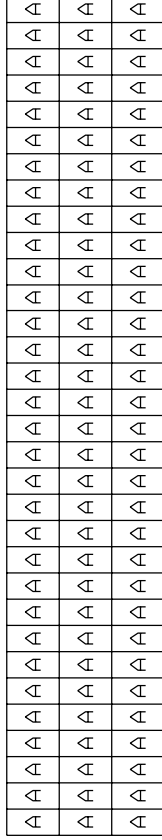
l) tails to fit in PC-board layout



FIRST ANGLE PROJECTION		DRWG BY	KN
UNLESS OTHERWISE SPECIFIED TOLERANCES: ANGULAR ± 2°		CHK'D BY	Ca
3 PLACE ±	±	APP'D BY	JB
2 PLACE ±	±	SCALE	2:1
1 PLACE ±	±		
DRAFT WHERE APPLICABLE MUST REMAIN WITHIN DIMENSIONS			
DESIGN DIMENSION	<input checked="" type="checkbox"/> MM		
	<input type="checkbox"/> IN.		
EQUIVALENT DIMENSION	<input type="checkbox"/> MM		
	<input type="checkbox"/> IN.		
IF TWO DIMENSIONS ARE SHOWN THE UPPER IS THE DESIGN DIMENSION, LOWER IS SECONDARY			

REVISE ONLY ON CAD SYSTEM		SH.	REV.
CAD/CAM PROJECT NAME		THIS DRAWING CONTAINS INFORMATION THAT IS PROPRIETARY TO MOLEX INC. & SHOULD NOT BE USED WITHOUT WRITTEN PERMISSION	
85042000 s12			
TITLE			
96 pos. female connector DIN 41612 style C, + clip with coding, dimensions			
MOLEX MOLEX EUROPE		SHEET NO. DATE	
		2 of 2 96/04/30	
PART NO.	DWG NO.	SIZE	
	SDA-85042-0001	B	

VIEW ON MATING SIDE



1 2 3 4 5 6 7 8 9 10 11 12 13 14 15 16 17 18 19 20 21 22 23 24

A = 96 STANDARD CONTACTS L=4,5

Marking	Standard
Performance level	G2/0 = Contact area level2 / Termination tin
Flux proof	no
Fixing clip	no
Dimensions	SDA-85042-0001 sht.2
Technical Data	PS-85042-0001

A	G2/0	a1-32	b1-32	c1-32
Contact symbol	Perform. level	Contact position number		

first release see ECN No. 2154	REVISIONS	FOR PREVIOUS REVISIONS SEE MRI LIST		
	LTR	IF TWO DIMENSIONS ARE SHOWN, THE UPPER IS THE DESIGN DIMENSION, LOWER IS SECONDARY		
	DESIGN DIMENSION	<input type="checkbox"/> MM <input type="checkbox"/> IN.	EQUIVALENT DIMENSION	<input type="checkbox"/> MM <input type="checkbox"/> IN.
	DRAFT WHERE APPLICABLE MUST REMAIN WITHIN DIMENSIONS			
	3 PLACE	±	INCH	±
	2 PLACE	±	METRIC	±
	1 PLACE	±		
	DRWG BY	Ccd	SIGN	
	CHK'D BY	KN	SIGN	
	APP'D BY		SIGN	
	SCALE			
UNLESS OTHERWISE SPECIFIED TOLERANCES: ANGULAR ± 2°				
CAD/CAM PROJECT NAME		S8504202		
REVISE ONLY ON CAD SYSTEM		SH. REV.		
		THIS DRAWING CONTAINS PROPRIETARY TO MOLEX INC. & SHOULD NOT BE USED WITHOUT WRITTEN PERMISSION		
TITLE		S81		
96 pos. female connector acc. DIN 41612 style C contacts arrangement				
MOLEX EUROPE		SHEET NO.	DATE	
		1 OF 1	96/05/24	
PART NO.		DWG NO.		SIZE
85042-0282		SDA-85042-0282		A