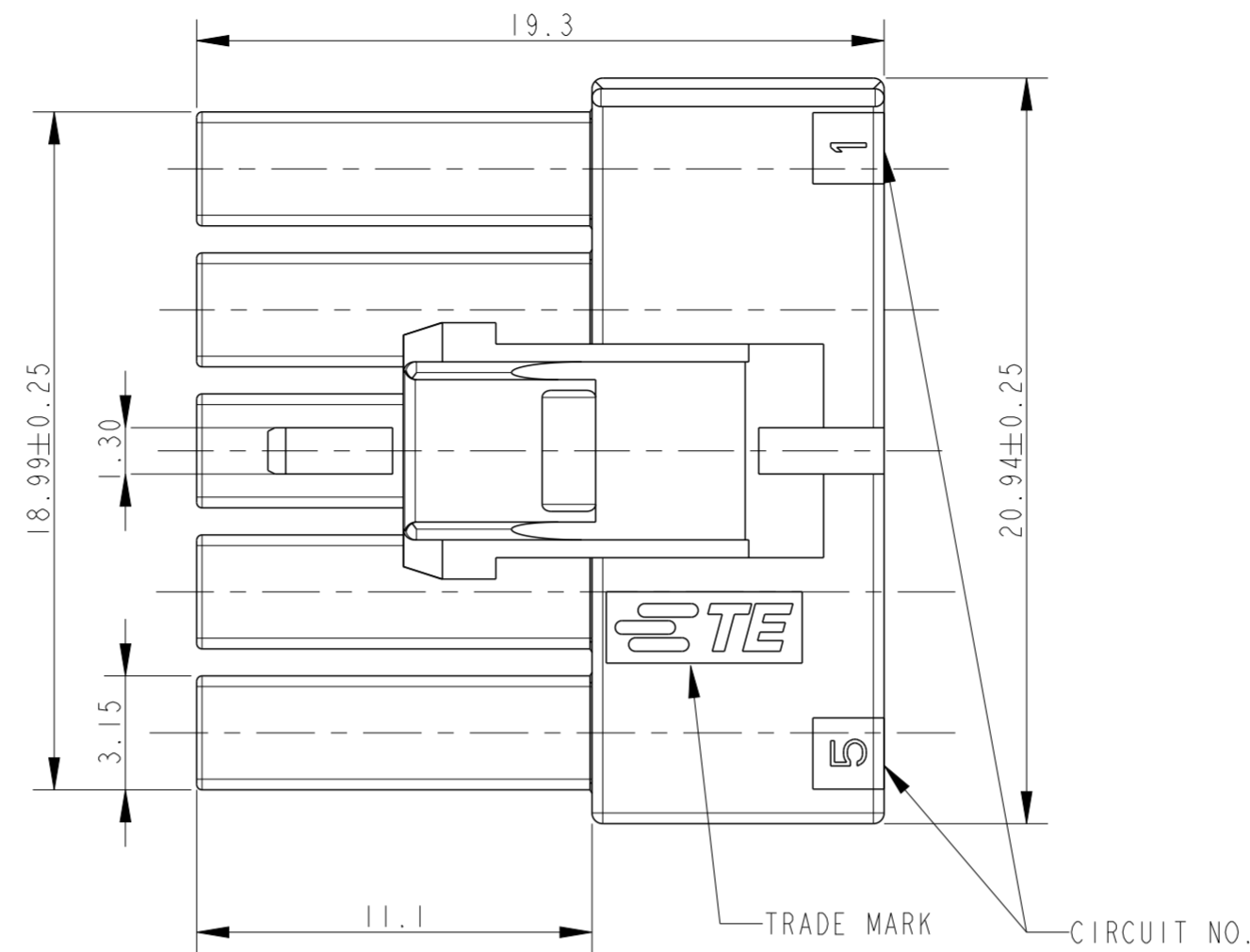
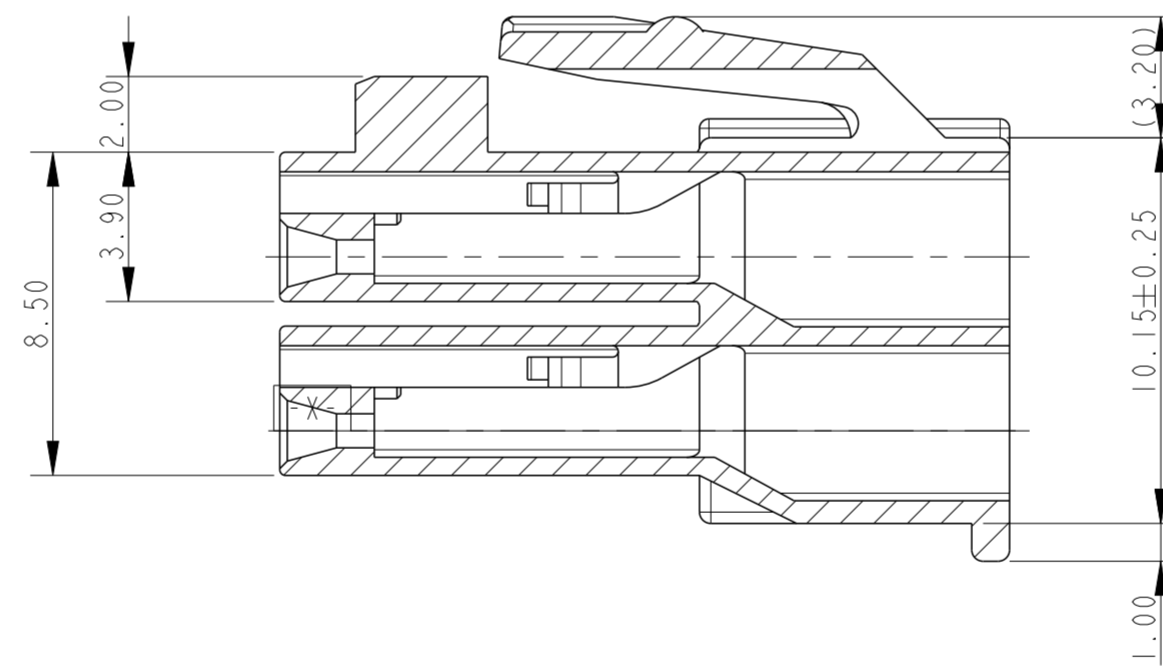
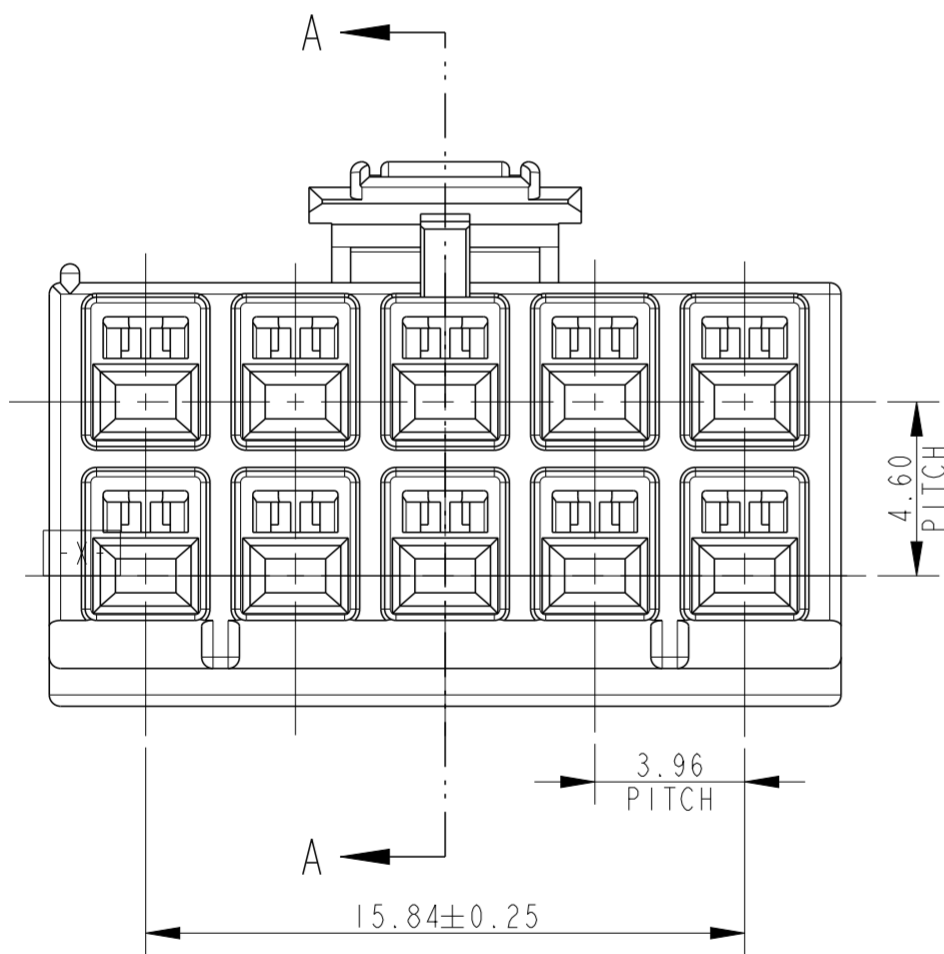


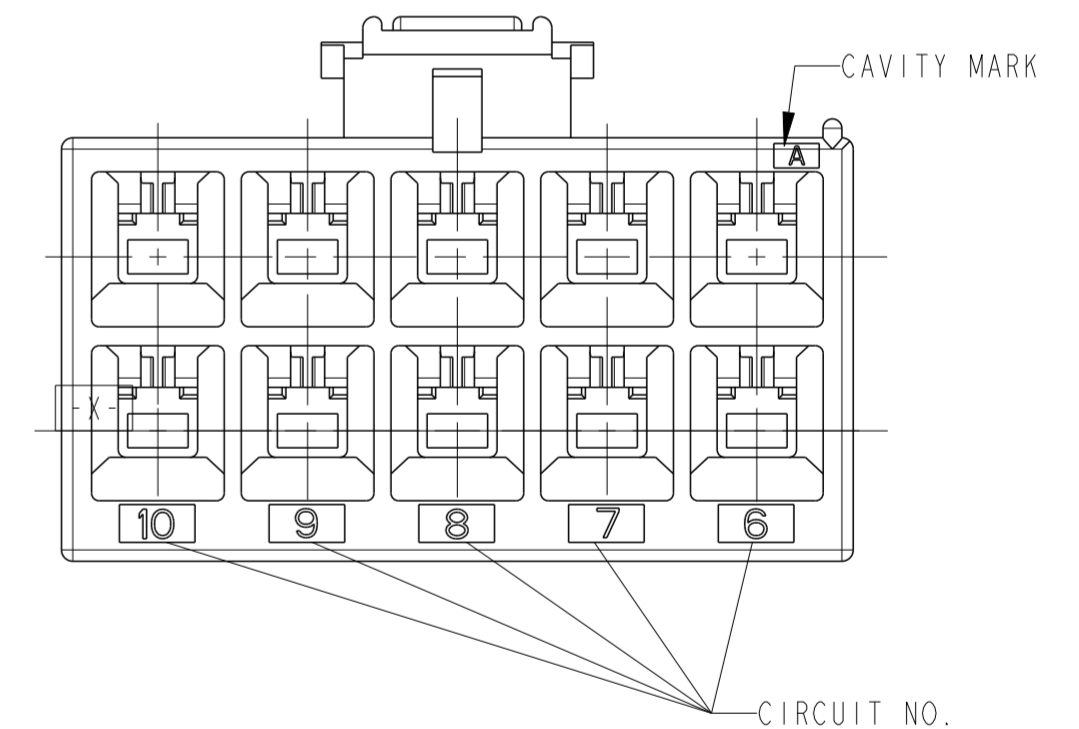
REVISIONS					
P	LTR	DESCRIPTION	DATE	DWN	APVD
	C	REVISED PER ECR-20-100642	19SEP2022	M.G	D.Z



- 1 APPLICABLE CONTACT P/N:  
 REC CONTACT: 175152-□ (20-16 AWG)  
 175151-□ (26-22 AWG)
- 2 MATING CONN. P/N:  
 CAP HSG: 176288-□ (FREE HANGING)  
 176298-□ (PANEL MOUNT)  
 TAB CONTACT: 175150-□ (20-16 AWG)  
 175149-□ (26-22 AWG)
- 3 INSTRUCTION SHEET: IS-503J.



SECTION A-A



DISCONTINUED	—BLACK	10	176277-9
DISCONTINUED	—BLUE	10	176277-6
DISCONTINUED	—YELLOW	10	176277-4
DISCONTINUED	—RED	10	176277-2
	NATURAL	10	176277-1
	COLOR	POSITION	PART NO.

THIS DRAWING IS A CONTROLLED DOCUMENT.		DWN M. SHINDO 23NOV1989	TE Connectivity															
DIMENSIONS: mm		CHK Y. FUJITA 23NOV1989																
TOLERANCES UNLESS OTHERWISE SPECIFIED:		APVD N. ONQUE 23NOV1989	NAME PLUG HOUSING, 3.96MM PITCH 10POS AMP UNIVERSAL POWER CONN.															
<table border="1"> <tr><td>0 PLC</td><td>±</td></tr> <tr><td>1 PLC</td><td>±0.25</td></tr> <tr><td>2 PLC</td><td>±0.20</td></tr> <tr><td>3 PLC</td><td>±</td></tr> <tr><td>4 PLC</td><td>±</td></tr> <tr><td>ANGLES</td><td>±3°</td></tr> <tr><td>FINISH</td><td>-</td></tr> </table>		0 PLC	±	1 PLC	±0.25	2 PLC	±0.20	3 PLC	±	4 PLC	±	ANGLES	±3°	FINISH	-	PRODUCT SPEC 108-5302	SIZE A2	
0 PLC	±																	
1 PLC	±0.25																	
2 PLC	±0.20																	
3 PLC	±																	
4 PLC	±																	
ANGLES	±3°																	
FINISH	-																	
MATERIAL 6/6 NYLON (UL94V-0)		APPLICATION SPEC 114-5142	CAGE CODE 00779	DRAWING NO C-176277														
		WEIGHT -	RESTRICTED TO C															
		RESTRICTED CUSTOMER	SCALE 5:1	SHEET 1 OF 1														