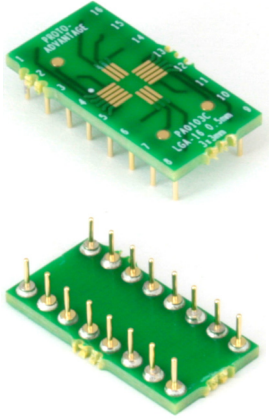


PA0103C *Proto Advantage*

Datasheet revision 1.0

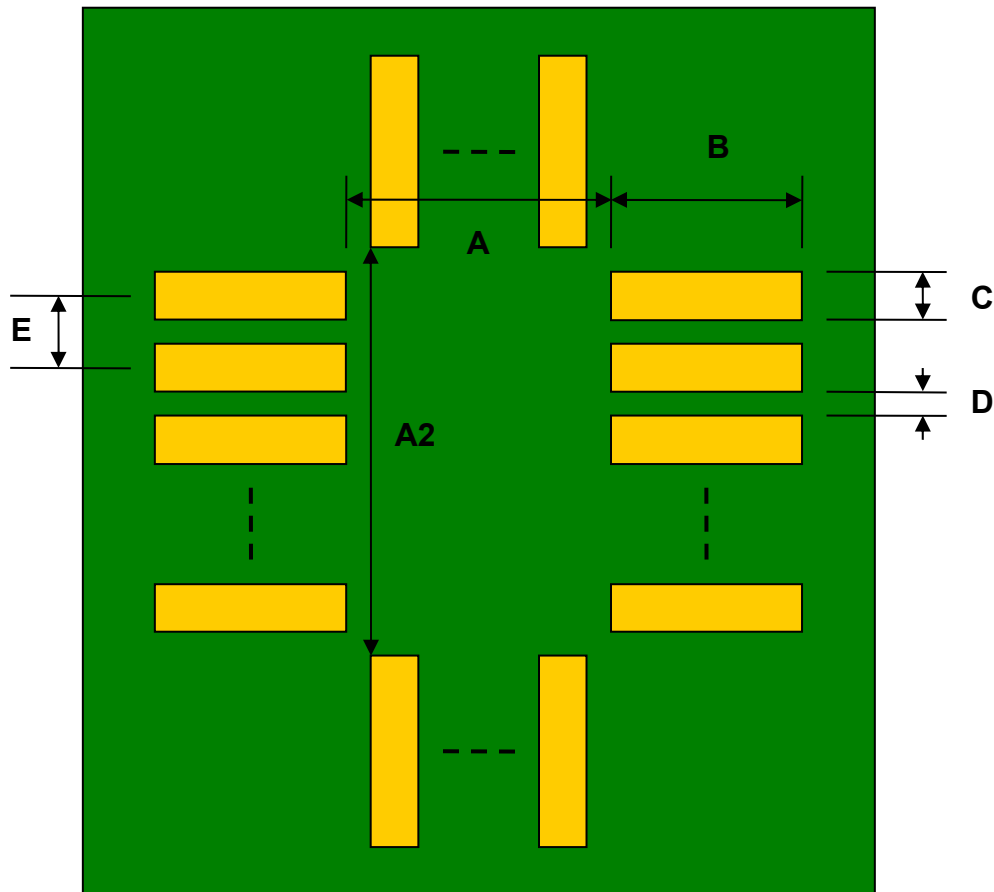
www.Proto-Advantage.com

LGA-16 to DIP-16 SMT Adapter (0.5 mm pitch, 3 x 3 mm body) *Compact Series*



REF.	DIMENSIONS					
	mm			inches		
	MIN.	TYP.	MAX.	MIN.	TYP.	MAX.
A		2.00				
A2		2.00				
B		2.00				
C		0.30				
D		0.20				
E		0.50				
F					0.300	
G					0.100	
H		0.46				
X					0.400	
Y					0.800	

Top View (SMT Footprint)



(Representative drawing only - not to scale)

Bottom View (DIP Pins)



(Representative drawing only - not to scale)

Side View (DIP Pins)



(Representative drawing only - not to scale)