

OSC-S22 RTC Series : RTC SMD Crystal Clock Oscillator 2.5x2.0 mm

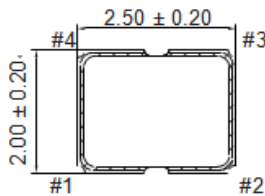
32.768KHz

● SPECIFICATION

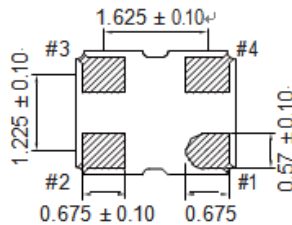
Model	OSC-S22 RTC Series		
Frequency range	32.768KHz		
Storage temperature range	- 55°C ~ + 125°C		
Operation temperature range	- 10°C ~ + 70°C , - 40°C ~ + 85°C		
Frequency stability	±20 ppm ~ ±50ppm		
Power supply voltage	3.3V DC ±10%	2.5V DC ±5%	1.8V DC ±5%
Current consumption	50uA max		
Output level	C-MOS		
Load	15pF max.		
Output voltage level	V _{OL} : 10% V _{dd} max. / V _{OH} : 90% V _{dd} min.		
Start-up Time	2 m sec. max.		
Duty cycle	40% ~ 60% at 1/2 V _{dd}		
RISE / FALL TIME	50nS max		
AGING	±3ppm / Year		

● DIMENSIONS (mm)

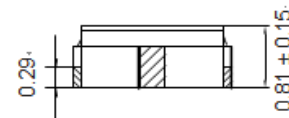
[TOPVIEW]



[BOTTOM VIEW]

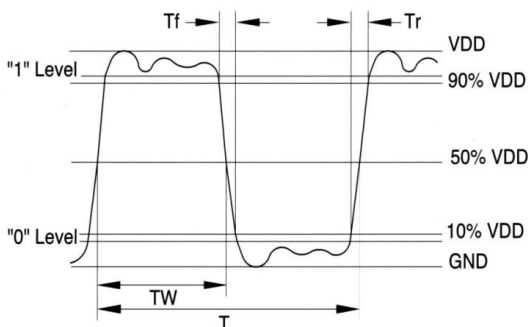


[SIDE VIEW]

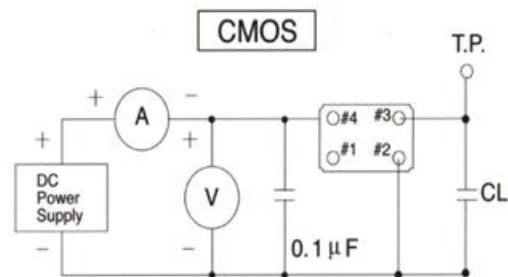


#1: E/D #3: OUTPUT
#2: GND #4: VDC

● OUTPUT WAVEFORM



● TEST CIRCUIT



*** Because S22 series has no by pass capacitor.
So, we recommend our customer to use capacitor 0.1μF
in join Vcc and GND.