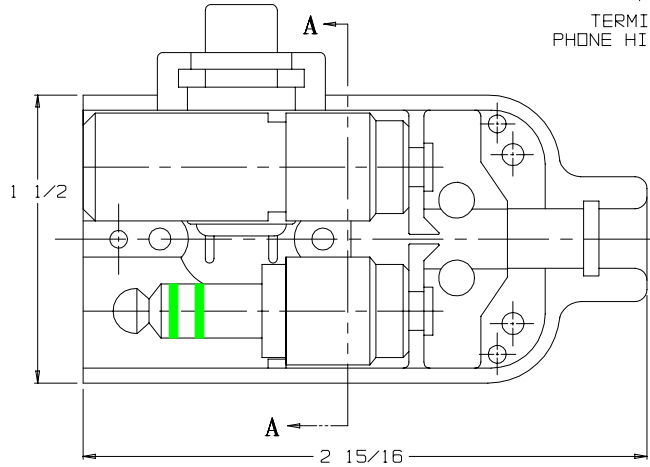
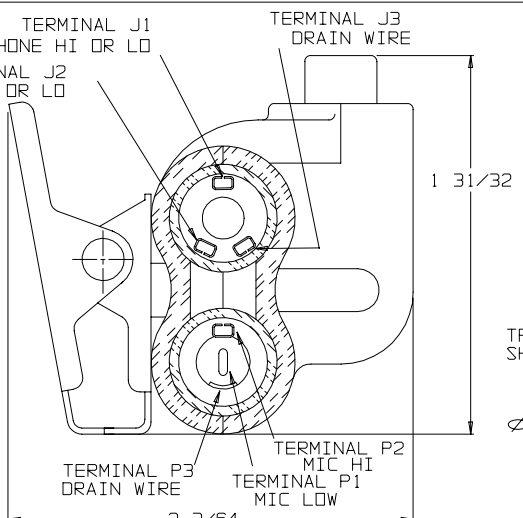


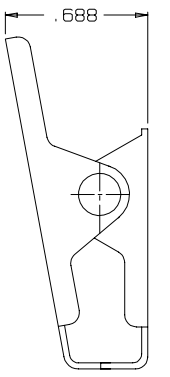
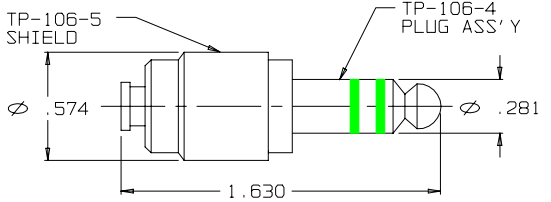
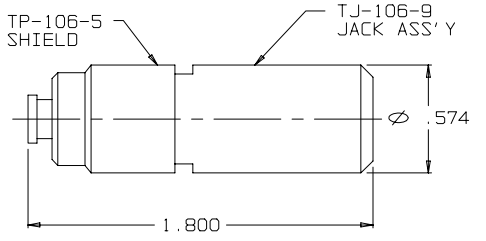
C TJS-106



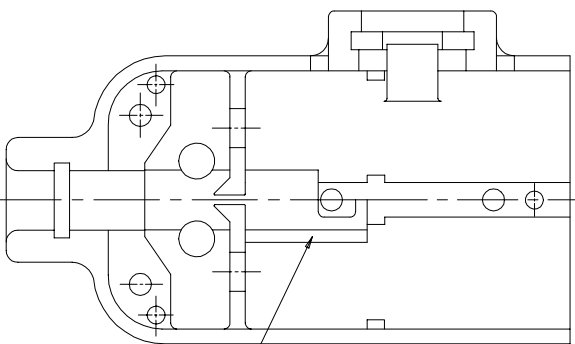
VIEW WITH HALF SHELL REMOVED



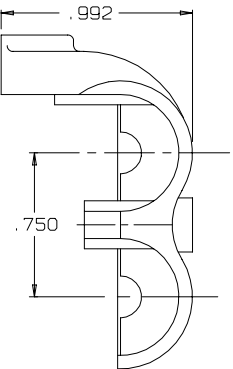
SECTION A-A



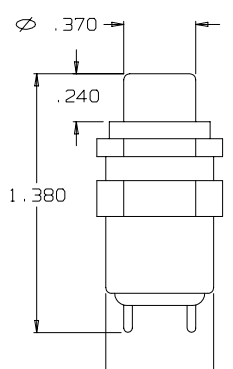
CLIP ASSY TJS-104-3A



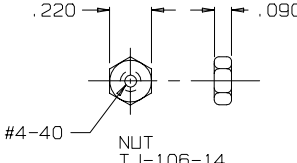
CHANNEL FOR SWITCH LEADS



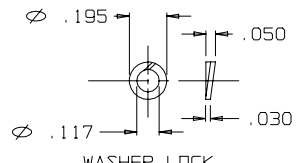
SHELL, HALF TJS-106-1



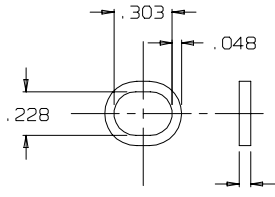
SWITCH NX301LB1B



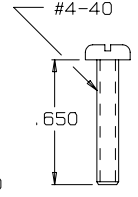
NUT TJ-106-14 (2 REQ'D)



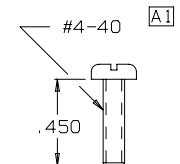
WASHER, LOCK TJ-106-13 (4 REQ'D)



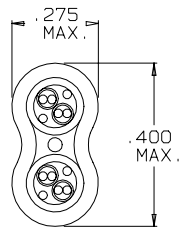
RING, STRAIN RELIEF TJ-106-10A



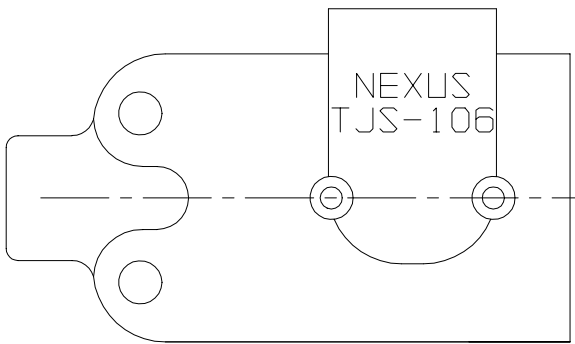
SCREW TJS-106-19 (2 REQ'D)



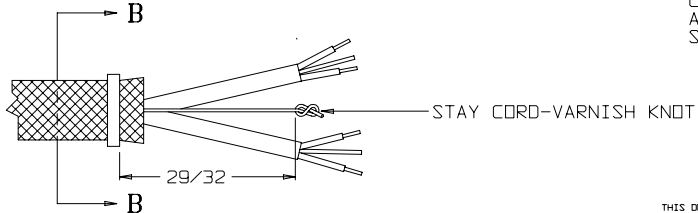
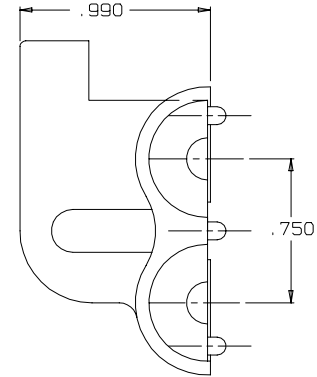
SCREW TJ-106-12 (2 REQ'D)



SECTION B-B STRAIN RELIEF CLAMP TJ-106-10A AFTER CRIMPING SCALE: 4:1



SHELL, HALF TJS-106-2



STAY CORD-VARNISH KNOT

THIS DOCUMENT CONTAINS PROPRIETARY INFORMATION OF NEXUS, INCORPORATED AND SUCH INFORMATION MAY NOT BE DISCLOSED TO OTHERS FOR ANY PURPOSE OR USED FOR ANY PURPOSE WITHOUT THE WRITTEN CONSENT OF NEXUS.

DWN. BY <i>EWT</i>	DATE 9/16/02	MATERIAL	
CHECKED BY	DATE	FINISH	
APPR. BY	DATE	WEIGHT	SCALE 2:1
UNLESS OTHERWISE SPECIFIED DIMENSIONS ARE IN INCHES TOLERANCES ON FRACTIONS DECIMALS ANGLES +/- 1/64 +/- .005		TITLE JACK-TELEPHONE-BIAXIAL SHIELDED (6) CONDUCTOR WITH SWITCH	
DD NOT SCALE DWG. SHEET 1 OF 1		NEXUS STAMFORD, CONN	
		SIZE DWG. NO. C TJS-106	

A	INITIAL RELEASE	REV	DATE	CHK
LET.	REVISION	CN #	DATE	CHK