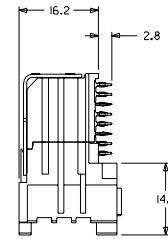
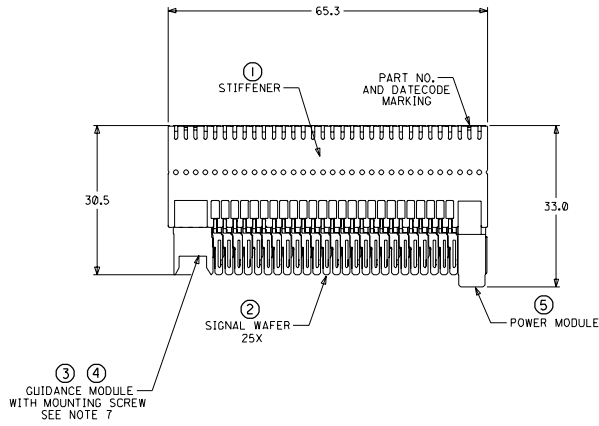
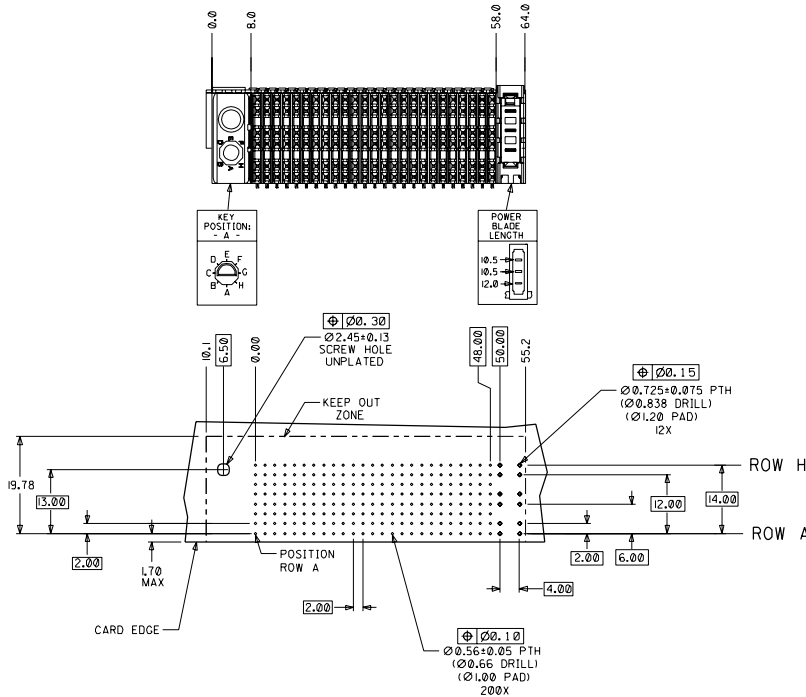


CUSTOMER: GENERAL MARKET



- NOTES: (UNLESS OTHERWISE SPECIFIED)
- MATERIALS: HOUSING - LIQUID CRYSTAL POLYMER (LCP), GLASS-FILLED, UL94V-0, BLACK.
TERMINALS - HIGH PERFORMANCE COPPER ALLOY.
STIFFENER - STAINLESS STEEL.
 - FINISH: SELECTIVE GOLD (Au) IN CONTACT AREA, 0.00076mm MINIMUM THICKNESS; SELECTIVE TIN/LEAD (Sn/Pb) ON PCB TAILS, NICKEL (Ni) OVERALL.
 - REFER TO MOLEX PRODUCT SPECIFICATION PS-74031-999 FOR PERFORMANCE SPECIFICATIONS.
 - REFER TO MOLEX DOCUMENT SD-74681-002 FOR ADDITIONAL DETAIL ON THE HSD SIGNAL WAFER.
 - REFER TO MOLEX DOCUMENT SD-74037-006 FOR ADDITIONAL DETAIL ON THE GUIDANCE MODULE.
 - REFER TO MOLEX DOCUMENT SD-74026-002 FOR ADDITIONAL DETAIL ON THE POWER MODULE.
 - MOUNTING SCREWS WILL BE BAGGED WITH EACH CONNECTOR.
 - PARTS ARE PACKAGED IN TUBES PER PK-70873-504 L.
 - PARTS ARE PACKAGED IN TUBES PER PK-70873-504 L.



DAUGHTERCARD HOLE PATTERN (CONNECTOR SIDE)

ITEM	PART NUMBER	DESCRIPTION	QTY
1	74046-0065	STIFFENER	1
2	74681-0001	HSD8 WAFER	25
3	74037-8001	POLARIZING/GUIDE MODULE	1
4	73726-0000	GUIDE MODULE MNTG SCREW	1
5	74026-8433	POWER MODULE	1

INITIAL RELEASE EC NO. UDT2002-0949 DRWN: ATP 02/01/16 CHKR: LAURX 02/01/16 APPR: BIXLER 02/01/16	QUALITY SYMBOLS MAJOR CRITICAL	GENERAL TOLERANCES UNLESS SPECIFIED	SCALE: 2:1	DESIGN UNITS: mm	DIMENSIONS: mm	SHT	REV
		4 PLACES ±0. -- 2. --	DRAWN BY & DATE: ATP 02/01/16	THIRD ANGLE PROJECTION	INCH	mm	ONLY
A	REV	3 PLACES ±0. -- 2. --	CHECKED BY & DATE: LAURX 02/01/16	TITLE: 8 ROW HSD DAUGHTERCARD ASSEMBLY SALES DRAWING			
		2 PLACES ±0. -- 2. --	APPROVED BY & DATE: BIXLER 02/01/16	MOLEX INCORPORATED			
		1 PLACE ±0. -- 2. --	CAD FILENAME: SD-74680-083	MATERIAL NO.: 74680-0083	DRAWING NO.: SD-74680-083	SHEET NO. 1 OF 1	
		ANGULAR: ± 2°	THIS DRAWING CONTAINS INFORMATION THAT IS PROPRIETARY TO MOLEX INCORPORATED AND SHOULD NOT BE USED WITHOUT WRITTEN PERMISSION.				