

HV-AT(※)-PJ RF Report

HIROSE ELECTRIC CO.,LTD.
Jan. 2020
Rev.0
RF-19080

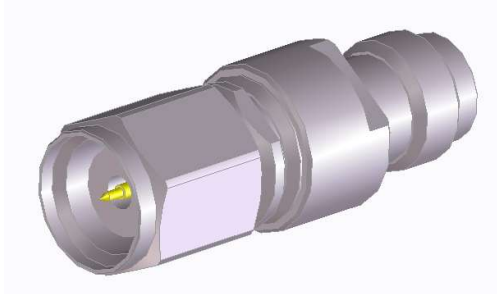
※ : Attenuation amount 0,1,2,3,4,5,6,7,8,9,10,20(dB)

Outline

- 1. Feature*
- 2. Measurement data*
- 3. Test Condition*

1. Feature

H1.85 Attenuator



Product No.	HRS No.
HV-AT(0)-PJ	CL354-0244-1 00
HV-AT(1)-PJ	CL354-0288-0 00
HV-AT(2)-PJ	CL354-0289-0 00
HV-AT(3)-PJ	CL354-0245-4 00
HV-AT(4)-PJ	CL354-0300-0 00
HV-AT(5)-PJ	CL354-0301-0 00
HV-AT(6)-PJ	CL354-0246-7 00
HV-AT(7)-PJ	CL354-0302-0 00
HV-AT(8)-PJ	CL354-0303-0 00
HV-AT(9)-PJ	CL354-0304-0 00
HV-AT(10)-PJ	CL354-0247-0 00
HV-AT(20)-PJ	CL354-0248-2 00

Measurement Diagram

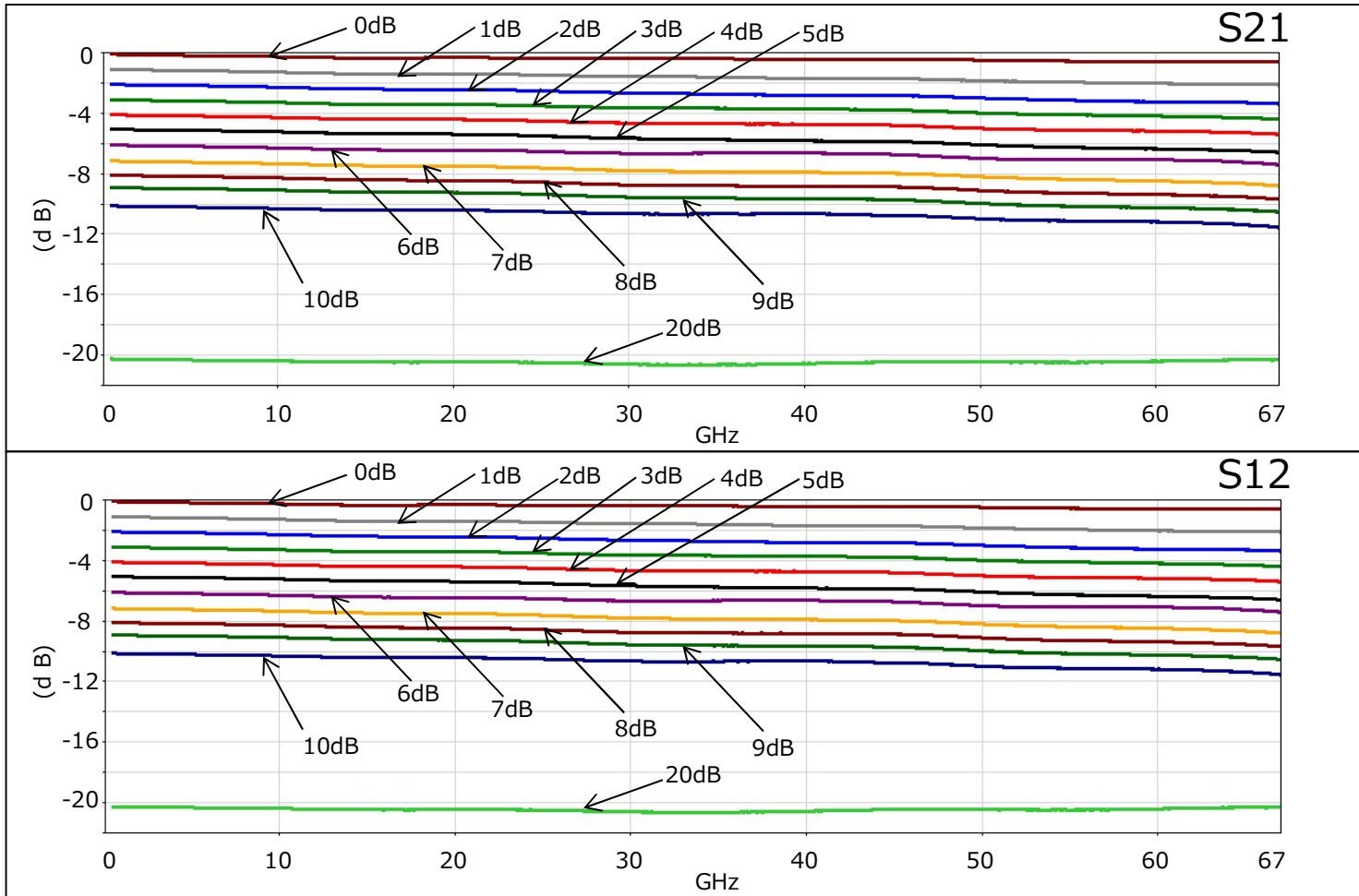


※ : Attenuation amount 0,1,2,3,4,5,6,7,8,9,10,20(dB)

2. Measurement data

RF Performance(Typical data)

ATTENUATION[dB]



Please see the details below:

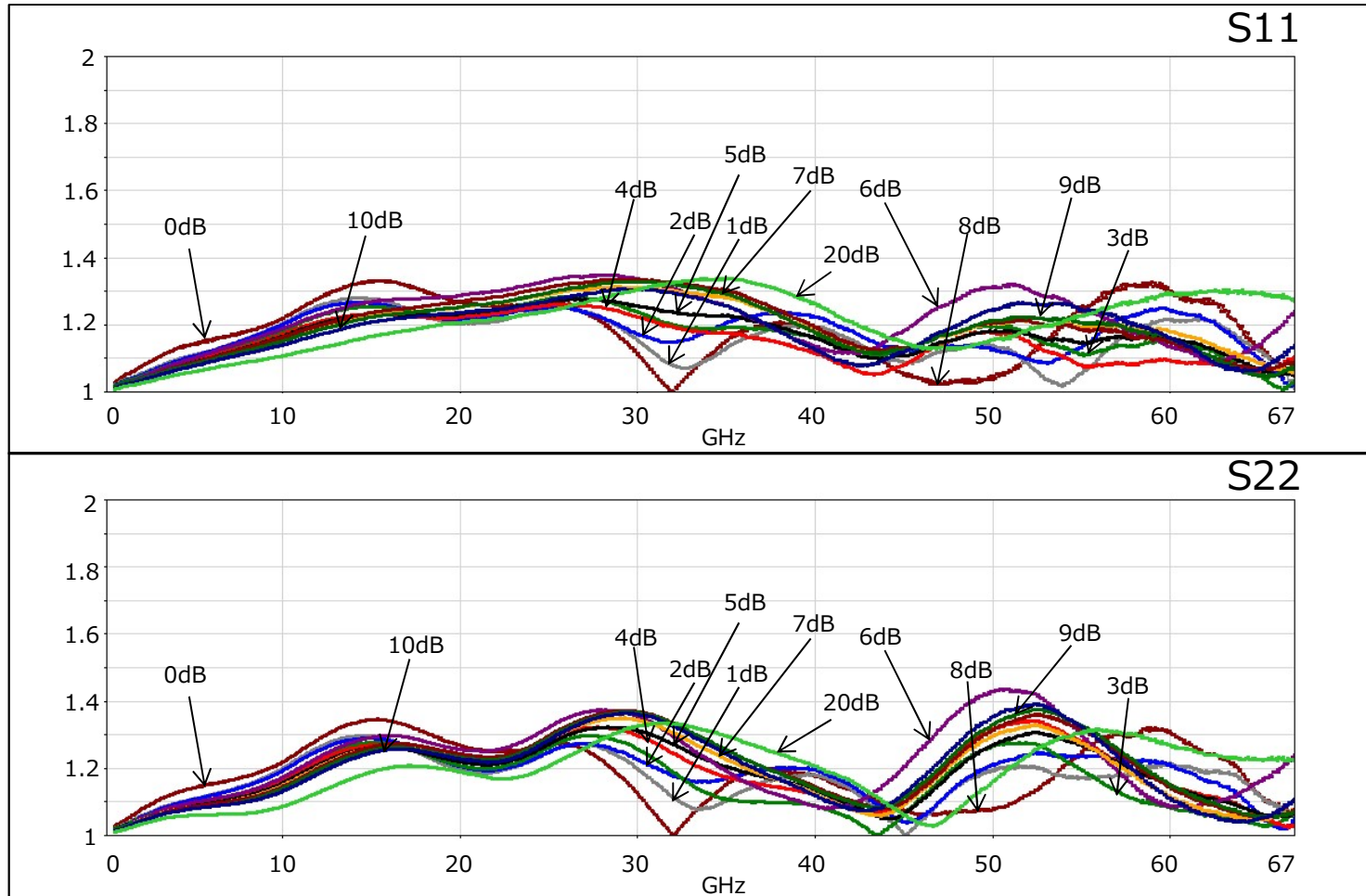
<https://www.hirose.com/product/en/pr/mmwave/>

※ : Attenuation amount 0,1,2,3,4,5,6,7,8,9,10,20(dB)

2. Measurement data

RF Performance(Typical data)

VSWR



Please see the details below:

<https://www.hirose.com/product/en/pr/mmwave/>

※ : Attenuation amount 0,1,2,3,4,5,6,7,8,9,10,20(dB)

3. Test Condition

TEST CONDITION

PNA set up

2 port Agilent E8361 PNA

Electrical cal : Agilent N4692-60001

Frequency range : 500MHz – 67GHz / 801 points

IF band : 300Hz



