

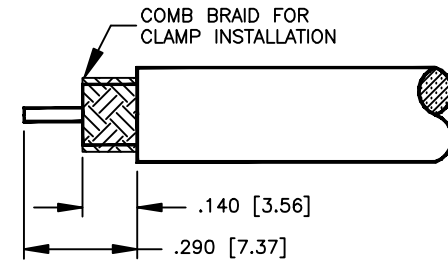
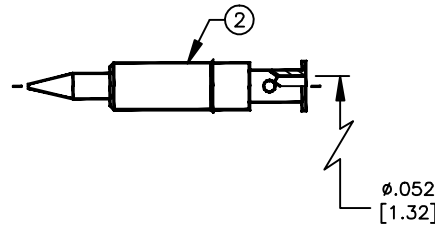
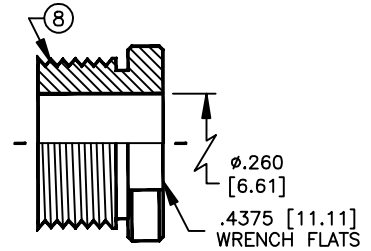
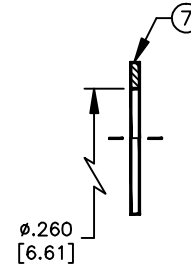
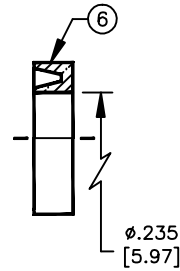
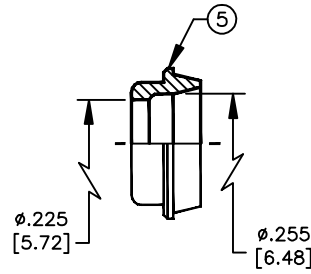
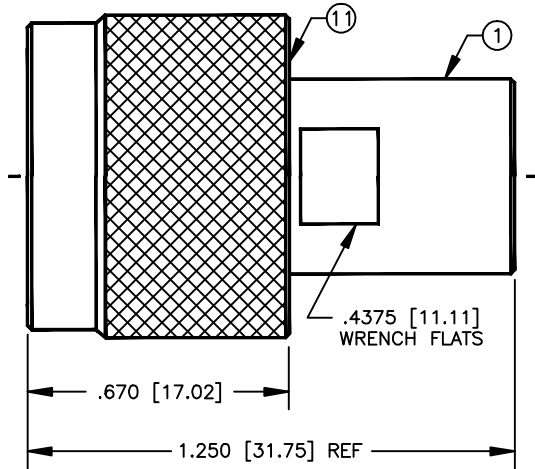
SPECIFICATION CONTROL DRAWING

THIS DRAWING CONTAINS INFORMATION PROPRIETARY TO RF INDUSTRIES, LTD. ANY UNAUTHORIZED USE OF THIS DRAWING IS EXPRESSLY PROHIBITED. ANY VIOLATION IS PUNISHABLE UNDER U.S. COPYRIGHT LAWS.

| REV | DESCRIPTION | DWN | DATE | APPROVED |
|-----|--|-----|----------|----------|
| B | ADD CLAMP HARDWARE AND DIMENSIONS | KMM | 9/14/94 | R. RICE |
| C | CHG BODY & DIE DIM /CHG BACK NUT TO FLATS / UPDATE DWG | CZS | 4/30/98 | R. RICE |
| D | CHANGE SHELL & BODY DIMS | CZS | 12/22/98 | R. RICE |
| E | CHANGEWASHER AND CLAMP NUT ID TO .260 (WAS .255) | JDM | 2/20/01 | JDM |

ALL DIMENSIONS ARE REFERENCE ONLY

000000



SPECIFICATIONS:

IMPEDANCE: 50 OHMS
 WORKING VOLTAGE: 1000 VRMS @ SEA LEVEL
 FREQUENCY RANGE: 0-11 GHz
 INSERTION LOSS: ≤ -0.2 dB @ 10 GHz
 VSWR MAX: 1.3:1 @ 9 GHz
 FOR ANTENNA SPECIALIST K214 & PRO-FLEX 800, TIMES AA3096 & COMM/SCOPE 2278 & 2279 CABLE
 INTERFACE PER MIL-STD-348A, SECTION 304.1

SUGGESTED STRIPPING INSTRUCTIONS
 SUGGESTED DIE: .068

DIMENSIONS ARE IN INCHES AND [MILLIMETERS]

UNLESS OTHERWISE NOTED TOLERANCES ARE:
 DECIMALS DIAMETER

| | | |
|-----------|-----------|----------|
| DRAWN | C. ZUNIGA | 12/22/98 |
| CHECKED | | |
| ORJ DRAWN | C. JONES | 12/31/91 |

APPROVALS DATE

RF connectors
 DIVISION OF RF INDUSTRIES, LTD.

7610 MIRAMAR RD
 SAN DIEGO, CA 92126
 (619)549-6340
 (619)549-6345 FAX

RFN-1004-1SP

N MALE CLAMP

| | | | |
|------------|-------------|------------------|--------------|
| SIZE | CABLE GROUP | DWG NO. | REV |
| A | P | 7509 | E |
| SCALE: 2:1 | | CAD FILE 13ARC B | SHEET 1 OF 1 |

| ITEM | DESCRIPTION | QTY | MATERIAL | FINISH |
|------|-----------------------|-----|-------------|--------|
| 11 | SHELL | 1 | BRASS | SILVER |
| 10 | GASKET | 1 | S.I. RUBBER | RED |
| 9 | RETAINING RING | 1 | BRASS | NONE |
| 8 | BACK NUT | 1 | BRASS | SILVER |
| 7 | WASHER | 1 | BRASS | SILVER |
| 6 | GASKET | 1 | S.I. RUBBER | RED |
| 5 | CLAMP | 1 | BRASS | SILVER |
| 4 | PRESS-FIT GROUND RING | 1 | BRASS | SILVER |
| 3 | DIELECTRIC | 1 | PTFE | NONE |
| 2 | PIN [PIN-310-10] | 1 | BRASS | GOLD |
| 1 | BODY | 1 | BRASS | SILVER |