

DO NOT SCALE FROM THIS PRINT

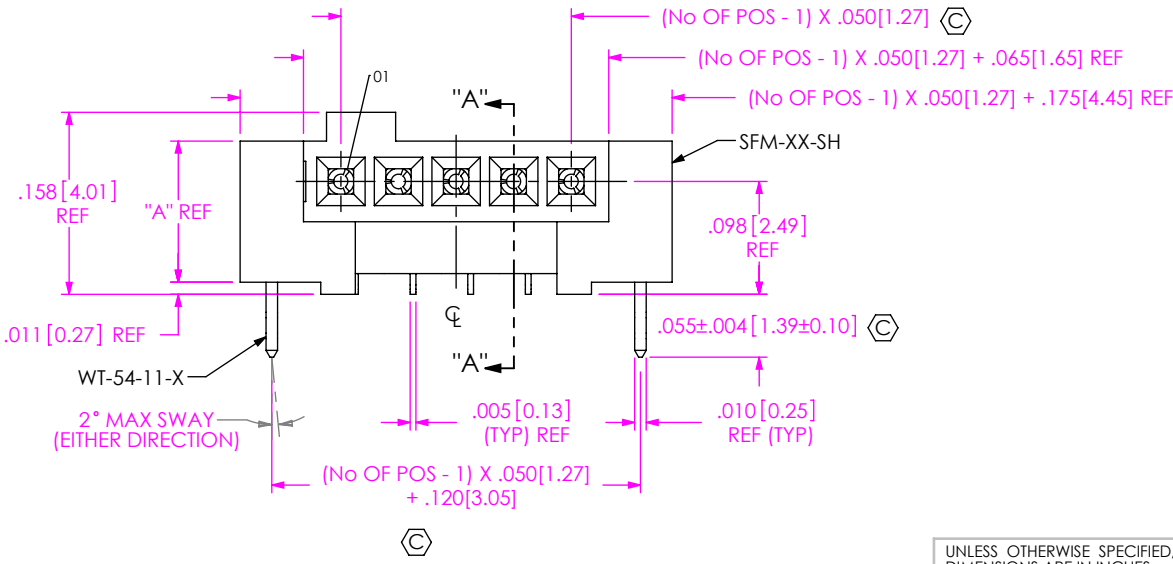
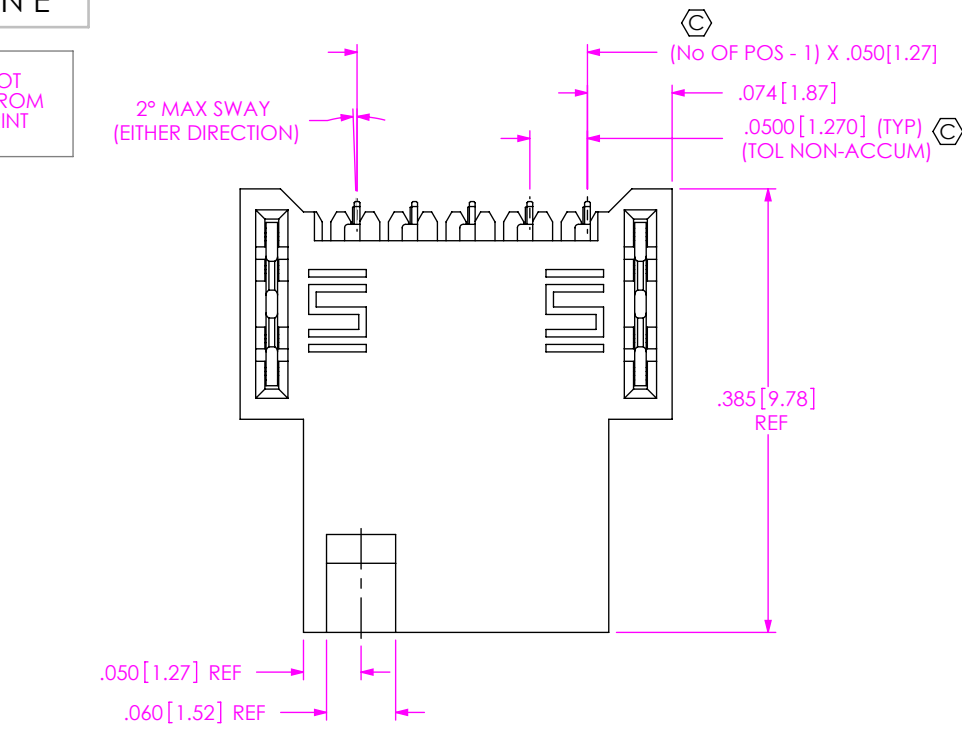


FIG 1
SFM-105-02-X-SH SHOWN

- NOTES:
1. Ⓢ REPRESENTS A CRITICAL DIMENSION.
 2. MAXIMUM BURR ALLOWANCE: .0015 [0.038].
 3. MINIMUM PUSHOUT FORCE: .5 LB.
 4. NOT RECOMMENDED FOR INVERTED REFLOW SOLDER.
 5. FOR QUANTITIES UP TO 49 PIECES, NO LEADER, TRAILER, OR REEL WILL BE SUPPLIED.
FOR QUANTITIES OF 50-124 PIECES, NO LEADER OR TRAILER WILL BE SUPPLIED.

SFM-1XX-XX-X-XH-TR

No OF POSITIONS
-05 THRU -30, *-31 THRU *-50
(PER ROW)

LEAD STYLE
-02

PLATING SPECIFICATION
-L: 10μ" SELECTIVE GOLD IN CONTACT AREA, MATTE TIN ON TAIL
-S: 30μ" SELECTIVE GOLD IN CONTACT AREA, MATTE TIN ON TAIL

PACKAGE
-TR: TAPE & REEL
(SEE NOTE 5)

ROW SPECIFICATION
-SH: SINGLE HORIZONTAL
-DH: DOUBLE HORIZONTAL

(* = NOT TOOLED)

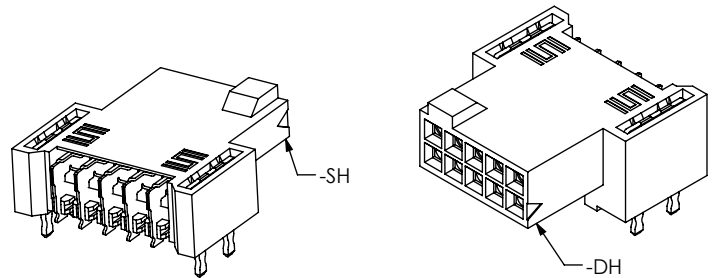


TABLE 2

ROW SPEC	"A"
-SH	.123 [3.12]
-DH	.173 [4.39]

TABLE 1

No. OF POS	⌒	—
-05 THRU -30	.004 [0.10]	.004 [0.10]
*-31 THRU *-50	.006 [0.15]	.006 [0.15]

(* = NOT TOOLED)

UNLESS OTHERWISE SPECIFIED, DIMENSIONS ARE IN INCHES.

TOLERANCES ARE:
DECIMALS ANGLES
.XX: ±.01 [0.3] 2°
.XXX: ±.005 [0.13]
.XXXX: ±.0020 [0.051]

PROPRIETARY NOTE
THIS DOCUMENT CONTAINS CONFIDENTIAL AND PROPRIETARY INFORMATION AND ALL DESIGN, MANUFACTURING, REPRODUCTION, USE, PATENT RIGHTS AND SALES RIGHTS ARE EXPRESSLY RESERVED BY SAMTEC, INC. THIS DOCUMENT SHALL NOT BE DISCLOSED, IN WHOLE OR PART, TO ANY UNAUTHORIZED PERSON OR ENTITY NOR REPRODUCED, TRANSFERRED OR INCORPORATED IN ANY OTHER PRODUCT IN ANY MANNER WITHOUT THE EXPRESS WRITTEN CONSENT OF SAMTEC, INC.

MATERIAL: DO NOT SCALE DRAWING SHEET SCALE: 6:1
INSULATOR: VECTRA E130i UL 94V-0, COLOR: BLACK
CONTACT: PHOS BRONZE

DESCRIPTION: .050 x .050 SOCKET STRIP ASSEMBLY

DWG. NO. SFM-1XX-XX-X-XH-TR

BY: VICKY Z 11/22/2010 SHEET 1 OF 3

520 PARK EAST BLVD, NEW ALBANY, IN 47150
PHONE: 812-944-6733 FAX: 812-948-5047
e-Mail info@SAMTEC.com code 55322

c:\enterprise\vaulf\DWG\MISC\MKTG\SFM-1XX-XX-X-XH-TR-MKT.SLDDRW

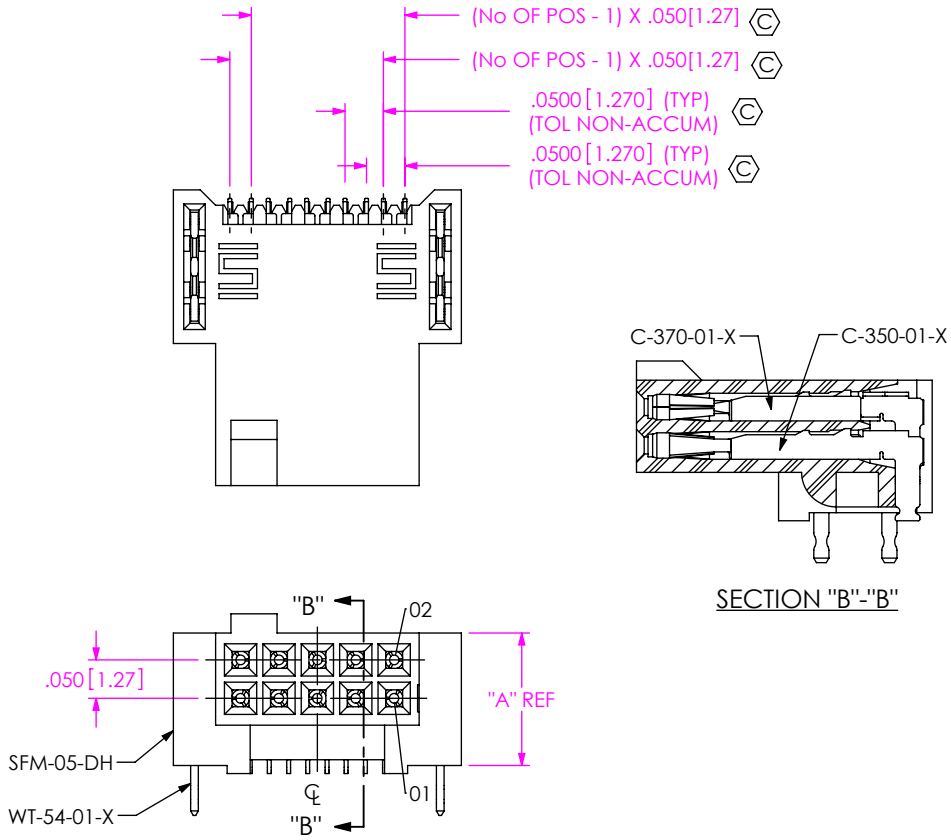
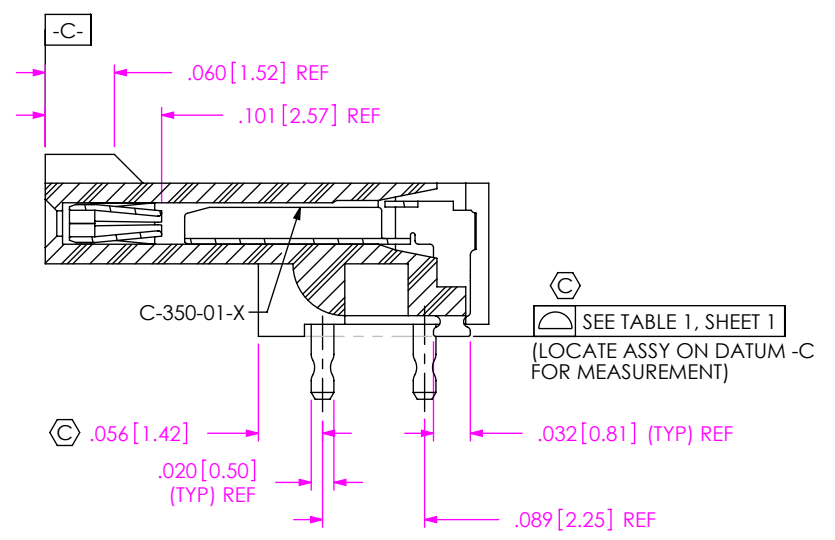


FIG 2
SFM-105-02-X-DH SHOWN
(DIFFERENT AS SHOWN, OTHERWISE SAME AS FIG 1)

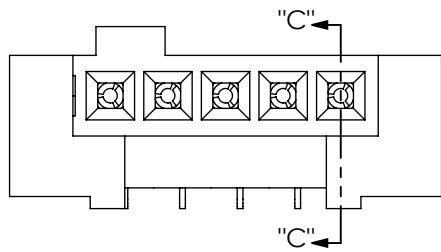


PROPRIETARY NOTE
THIS DOCUMENT CONTAINS CONFIDENTIAL AND PROPRIETARY INFORMATION AND ALL DESIGN, MANUFACTURING, REPRODUCTION, USE, PATENT RIGHTS AND SALES RIGHTS ARE EXPRESSLY RESERVED BY SAMTEC, INC. THIS DOCUMENT SHALL NOT BE DISCLOSED, IN WHOLE OR PART, TO ANY UNAUTHORIZED PERSON OR ENTITY NOR REPRODUCED, TRANSFERRED OR INCORPORATED IN ANY OTHER PROJECT IN ANY MANNER WITHOUT THE EXPRESS WRITTEN CONSENT OF SAMTEC, INC.

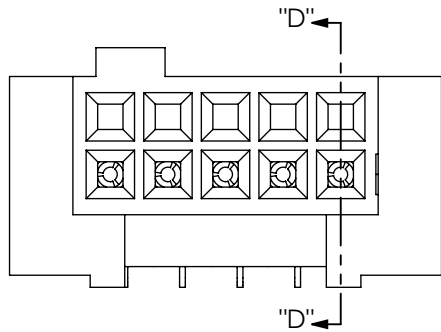
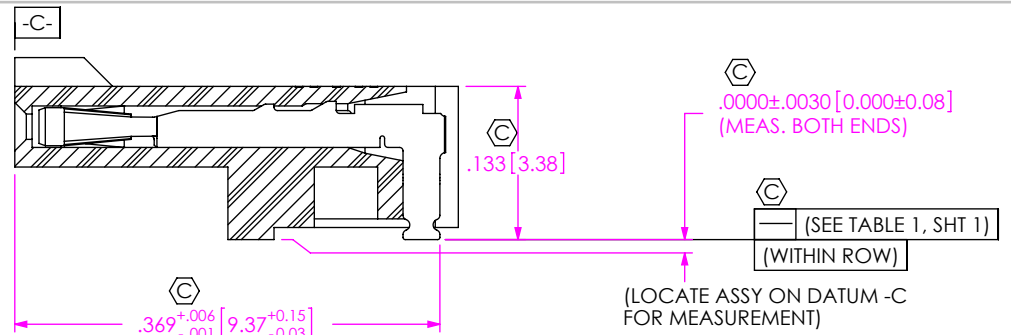
DO NOT SCALE DRAWING
SHEET SCALE: 4:1

samtec
520 PARK EAST BLVD, NEW ALBANY, IN 47150
PHONE: 812-944-6733 FAX: 812-948-5047
e-Mail info@SAMTEC.com code 55322

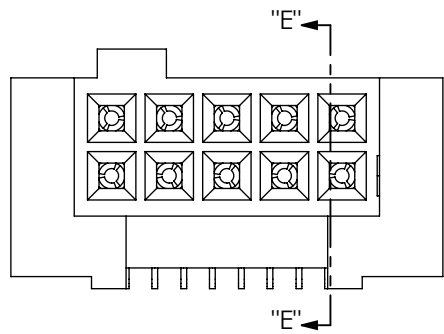
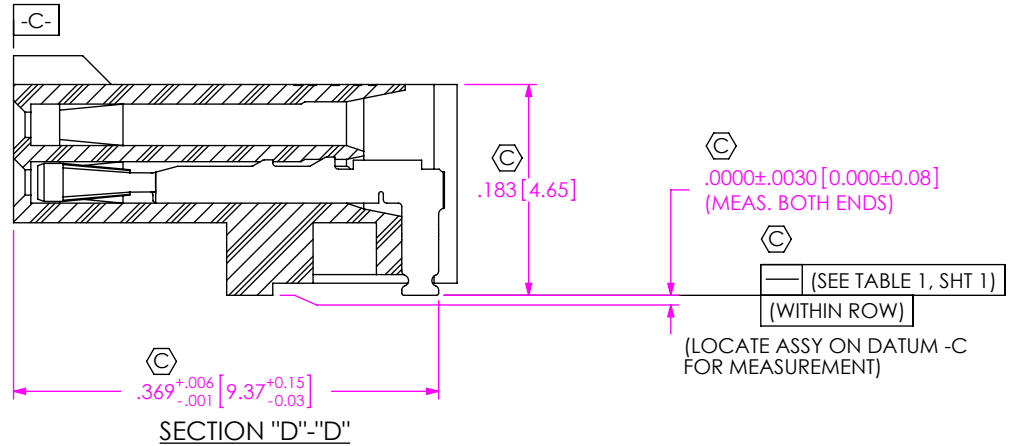
DESCRIPTION:	.050 x .050 SOCKET STRIP ASSEMBLY
DWG. NO.	SFM-1XX-XX-X-XH-TR
BY:	VICKY Z 11/22/2010 SHEET 2 OF 3



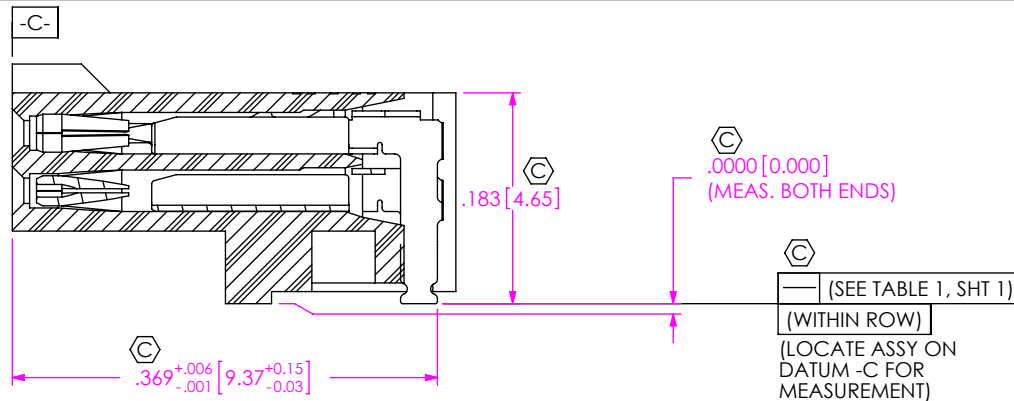
IN-PROCESS 1
FILL C-350-01-X
(FOR -SH ONLY)



IN-PROCESS 1
FILL C-350-01-X
(FOR -DH ONLY)



IN-PROCESS 2
FILL C-370-01-X
(FOR -DH ONLY)



SECTION "E"- "E"

PROPRIETARY NOTE
* THIS DOCUMENT CONTAINS PROPRIETARY INFORMATION. MANUFACTURING, REPRODUCTION, USE, PATENT RIGHTS AND SALES RIGHTS ARE EXPRESSLY RESERVED BY SAMTEC, INC. THIS DOCUMENT SHALL NOT BE DISCLOSED, IN WHOLE OR PART, TO ANY UNAUTHORIZED PERSON OR ENTITY NOR REPRODUCED, TRANSFERRED OR INCORPORATED IN ANY OTHER PROJECT IN ANY MANNER WITHOUT THE EXPRESS WRITTEN CONSENT OF SAMTEC, INC.

DO NOT SCALE DRAWING

SHEET SCALE: 6:1



520 PARK EAST BLVD, NEW ALBANY, IN 47150
PHONE: 812-944-6733 FAX: 812-948-5047
e-Mail info@SAMTEC.com code 55322

DESCRIPTION:	.050 x .050 SOCKET STRIP ASSEMBLY
DWG. NO.	SFM-1XX-XX-X-XH-TR
BY:	VICKY Z 11/22/2010 SHEET 3 OF 3