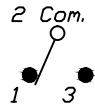


RECOMMENDED PCB LAYOUT

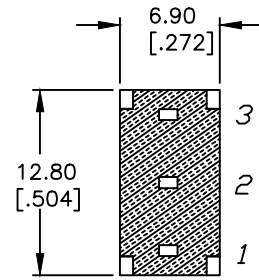


SPDT CIRCUIT CONTACT CONFIGURATION

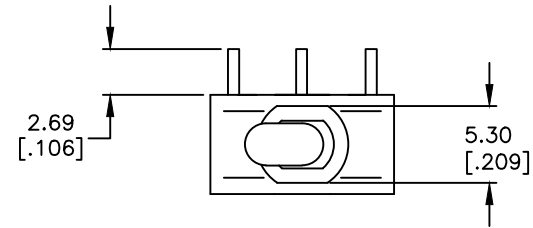
SWITCH FUNCTION		
PDS. 1	PDS. 2	PDS. 3
DN	NONE	DN
2-3	OPEN	2-1

NOTES:

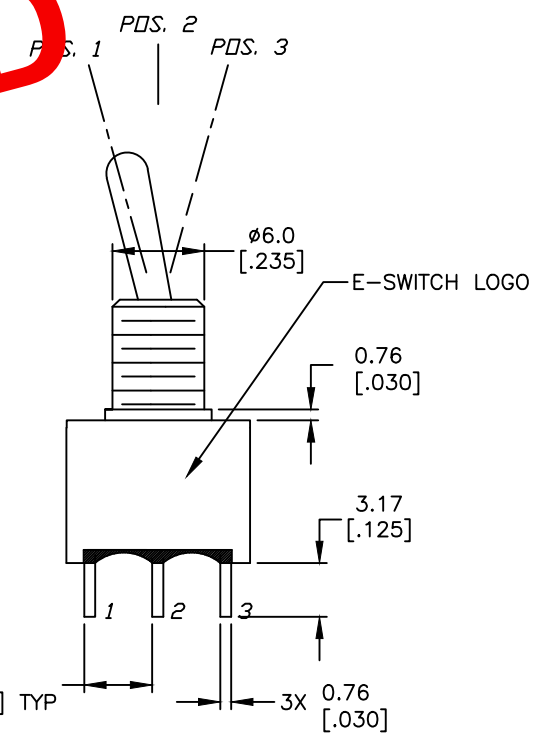
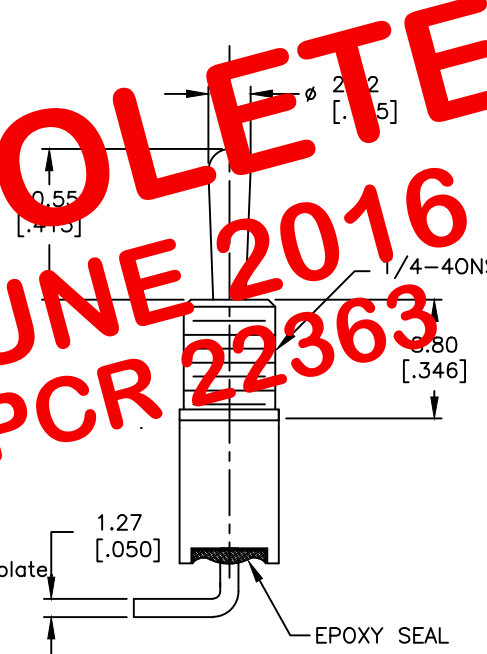
1. ALL DIMENSIONS IN MM [INCH]
2. GENERAL TOLERANCE: X.X=±0.4
X.XX=±0.25
3. TERMINAL NUMBERS FOR REF ONLY
- ▲4. RATING: 5A @120V AC or 28V DC
2A @250V AC
5. FIXED TERM. & MOVING CONTACT: COPPER ALLOY w/Silver plate
6. ELECTRIC LIFE: 40,000 make-and-break cycles at full load.
7. INSULATION RESISTANCE: 1,000 Mega-ohm min.
8. DIELECTRIC STRENGTH: 1,000 V RMS @sea level.
9. OPERATING TEMP.: -30°C to 85°C
- 10 ▲ DENOTES CRITICAL PARAMETER
11. 2002/95/EC (ROHS) COMPLIANT
- ▲12. HARDWARE TO BE SUPPLIED IN BULK:
T100011—LOCK WASHER QTY-1
T100015—LOCK RING QTY-1
T100000—HEX NUT QTY-2



SECTION A-A



OBSOLETE
 JUNE 2016
 PCR 22363



E-SWITCH®									
TITLE 100AWSP1T1B1M6QEH									
SCALE	2:1	DATE	10/30/07	DR	BF	DWG	ST101029	REV	B

B	17818	REVISED BUSHING	10/30/07	BF
A	17707	RELEASED FOR PRODUCTION	9/20/07	BF
REV.	ECN No.	DESCRIPTION	DATE	CHKD
THE INFORMATION CONTAINED IN THIS DOCUMENT IS PROPRIETARY TO E-SWITCH AND IS NOT TO BE COPIED OR TRANSFERRED				