

Customer Information Sheet

DRAWING No.: M22-533XX05R

IF IN DOUBT - ASK

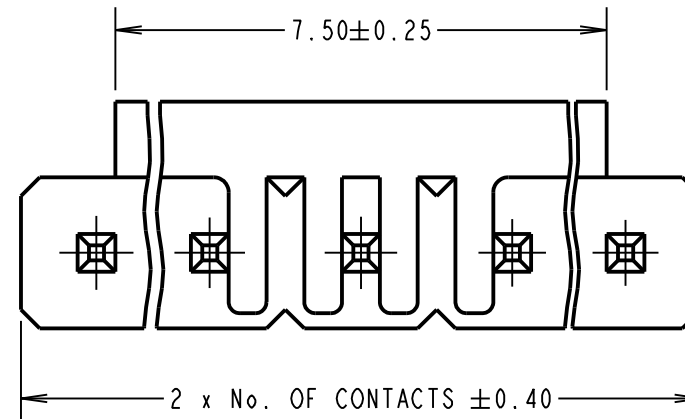
©

NOT TO SCALE

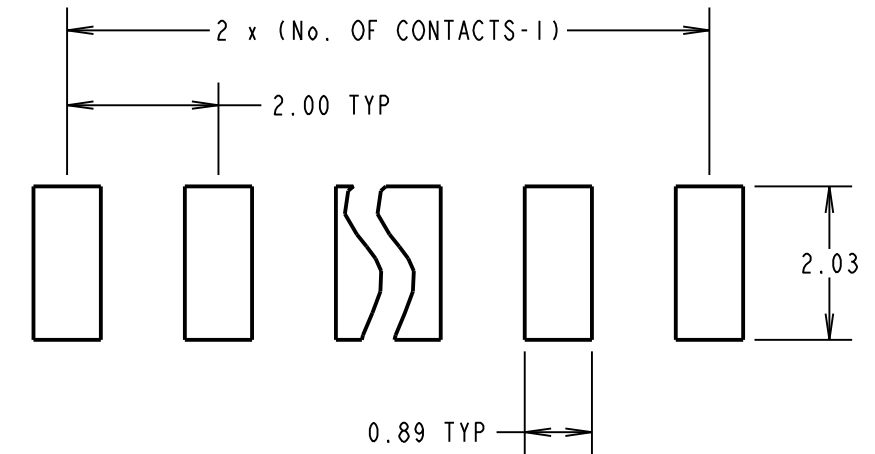
THIRD ANGLE PROJECTION

ALL DIMENSIONS IN mm

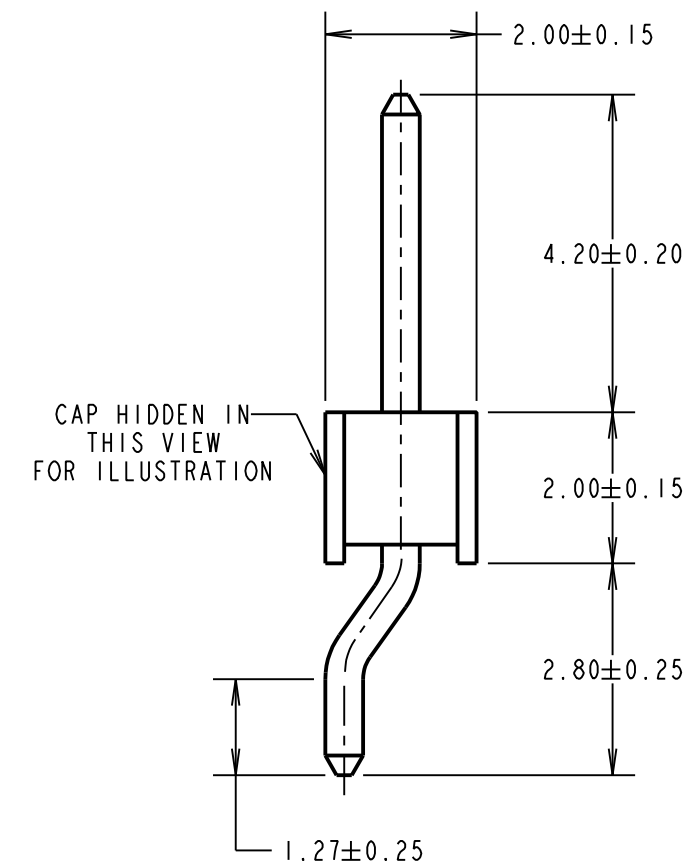
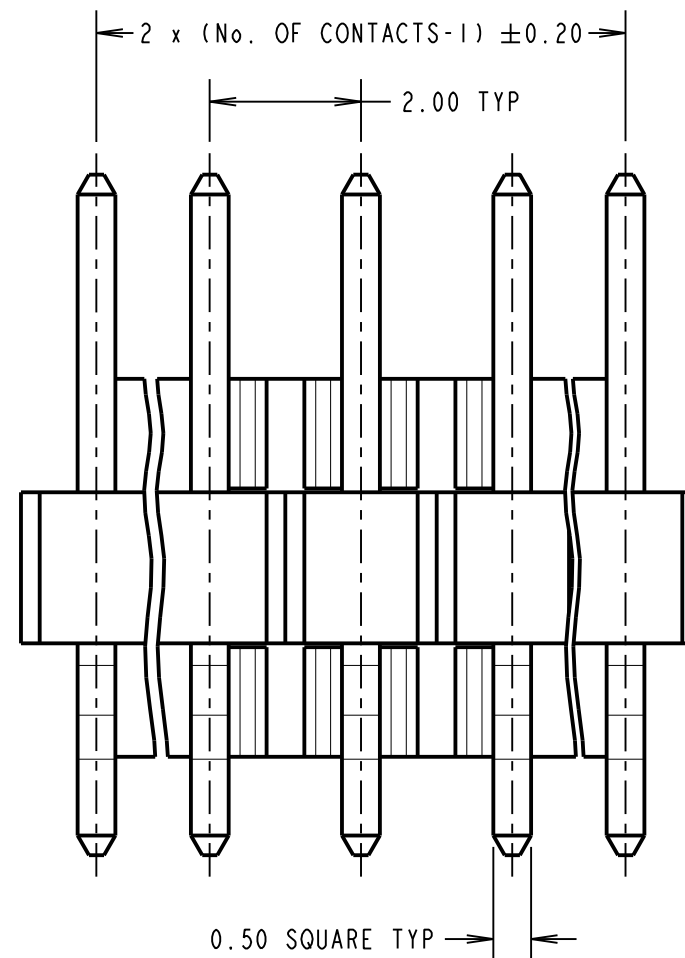
ORDER CODE:
M22-533XX05R
No. OF CONTACTS: _____
02, 03, 04, 05, 06, 08



RECOMMENDED PAD LAYOUT - TOLERANCE ± 0.05mm



SPECIFICATION:
MATERIAL:
 MOULDING = PA9T UL94V-0, BLACK
 CONTACT = BRASS
FINISH:
 CONTACT = GOLD FLASH OVER NICKEL
ELECTRICAL:
 CURRENT RATING = 2A
 CONTACT RESISTANCE = 20mΩ MAX
 INSULATION RESISTANCE = 1000 MΩ MIN
 DIELECTRIC STRENGTH = 500V AC/DC MINUTE
ENVIRONMENTAL:
 TEMPERATURE RANGE = -40°C TO +105°C
 FOR COMPLETE SPECIFICATION, SEE COMPONENT SPECIFICATION C018XX (LATEST ISSUE)



Active products:
 M22-5330205R
 M22-5330305R
 M22-5330505R
 M22-5330605R
 M22-5330805R

OBSOLETE
 All other size/finish combinations not listed above

MGP	5	25.06.21	30622
NAME	ISS.	DATE	CN/CO
APPROVED: MGP			
CHECKED: RTP			
DRAWN: S.BENNETT			
CUSTOMER REF.:			
ASSEMBLY DRG:			

- NOTES:**
- FOR COMPLETE SPECIFICATION, SEE COMPONENT SPECIFICATION C018XX (LATEST ISSUE).
 - FOR LOOSE PACKED PART, SEE DRAWING M22-533XX05.
 - PRODUCT IS TO BE TAPE AND REELED IN GENERAL ACCORDANCE WITH EIA-481 (ELECTRONIC INDUSTRIES ASSOCIATION).
 - SEE NEXT SHEET FOR TAPE DETAILS.

HARWIN

www.harwin.com
technical@harwin.com

THIS DRAWING AND ANY INFORMATION OR DESCRIPTIVE MATTER SET OUT HEREON ARE CONFIDENTIAL AND COPYRIGHT PROPERTY OF THE HARWIN GROUP AND MUST NOT BE DISCLOSED, LOANED, COPIED OR USED FOR MANUFACTURING, TENDERING OR FOR ANY OTHER PURPOSE WITHOUT THEIR WRITTEN PERMISSION.

TOLERANCES
 X. = ±1mm
 X.X = ±0.50mm
 X.XX = ±0.20mm
 X.XXX = ±0.01mm
 ANGLES = ±5°
 UNLESS STATED

MATERIAL:
 SEE ABOVE
FINISH: SEE ABOVE
S/AREA: mm²

TITLE:
 2.00mm PITCH SIL HORIZONTAL SMT PIN HEADER ASSEMBLY IN T&R
DRAWING NUMBER:
M22-533XX05R
 SHT 3 OF 4

Customer Information Sheet

DRAWING No.: M22-533XX05R

IF IN DOUBT - ASK

©

NOT TO SCALE

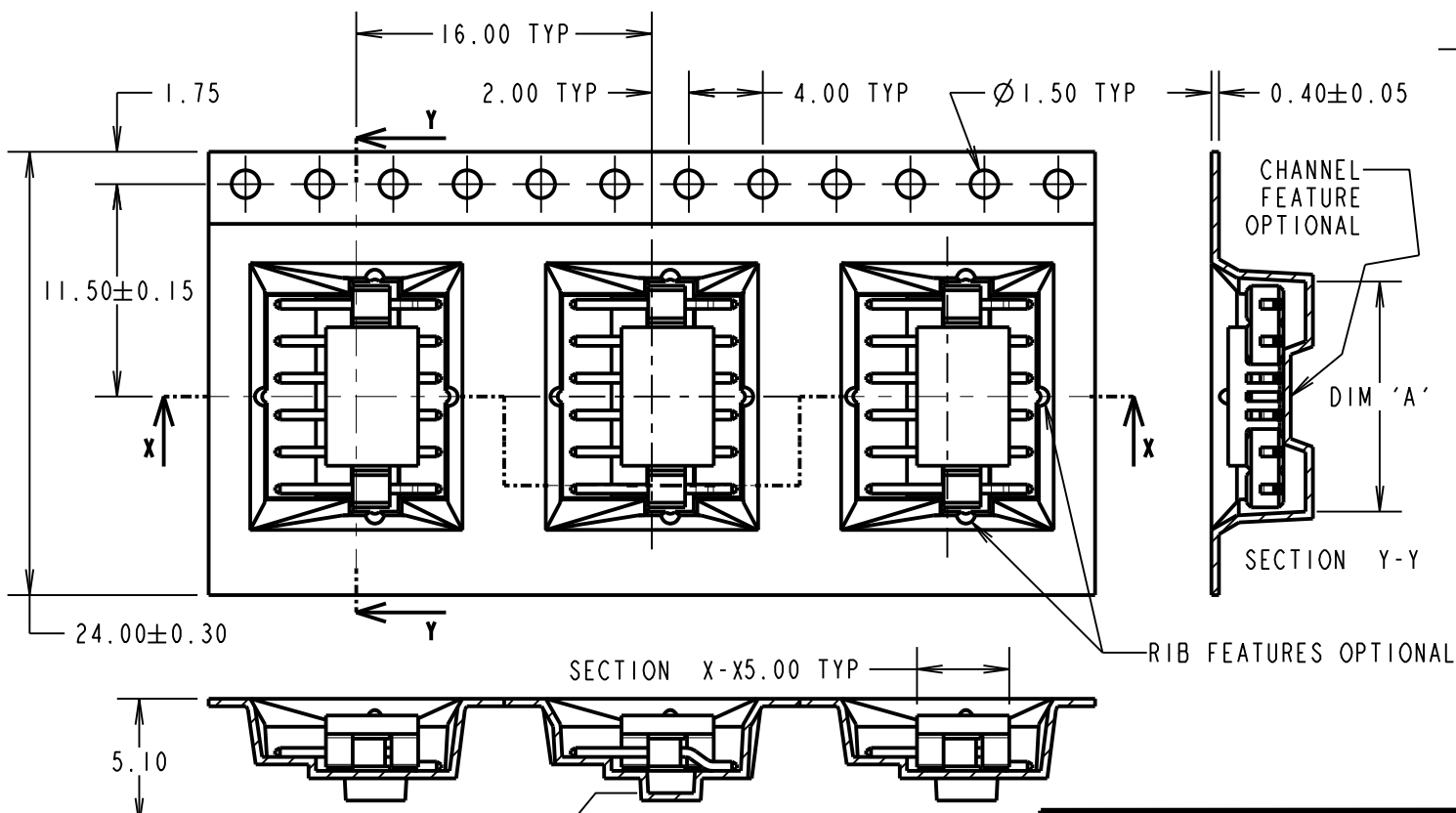
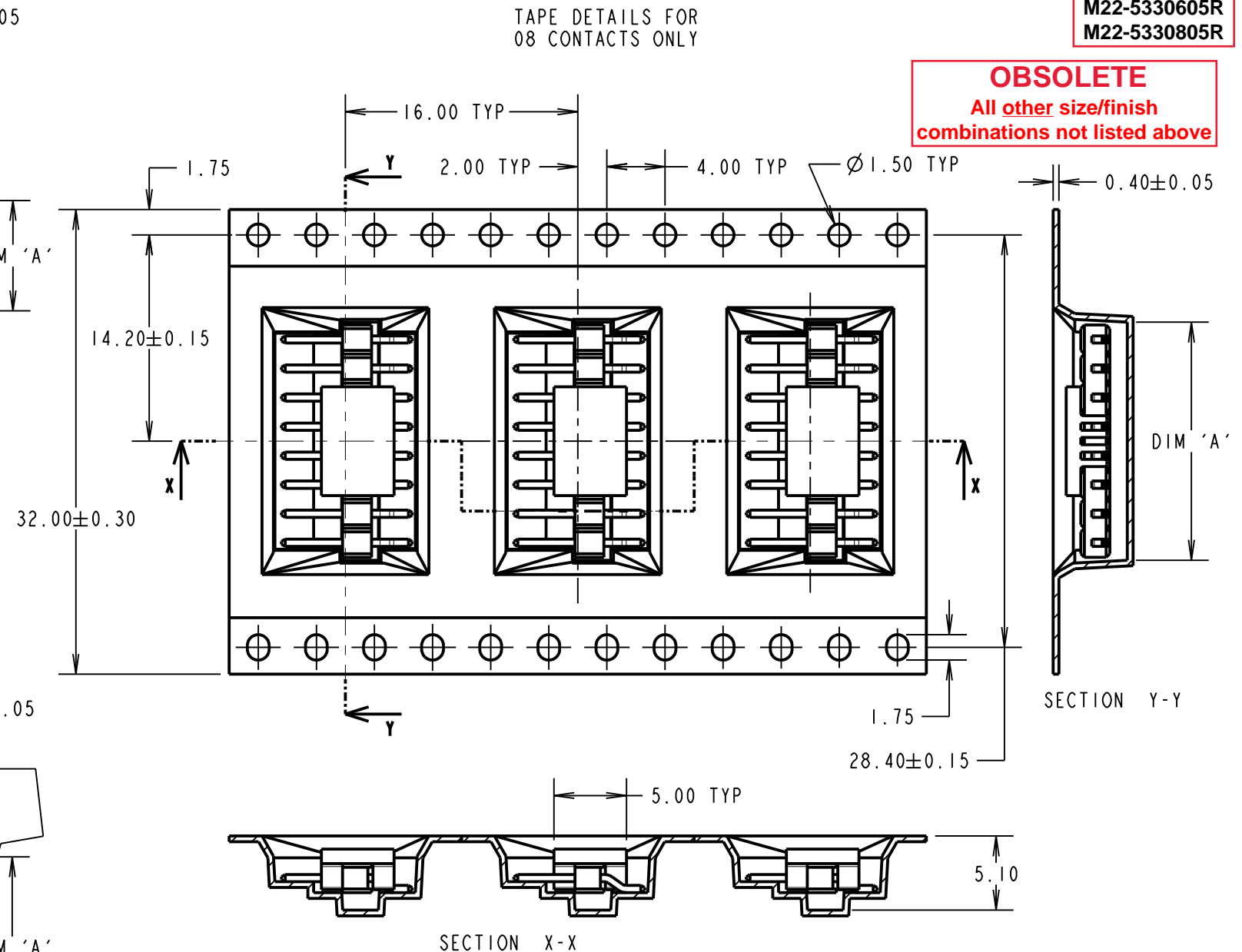
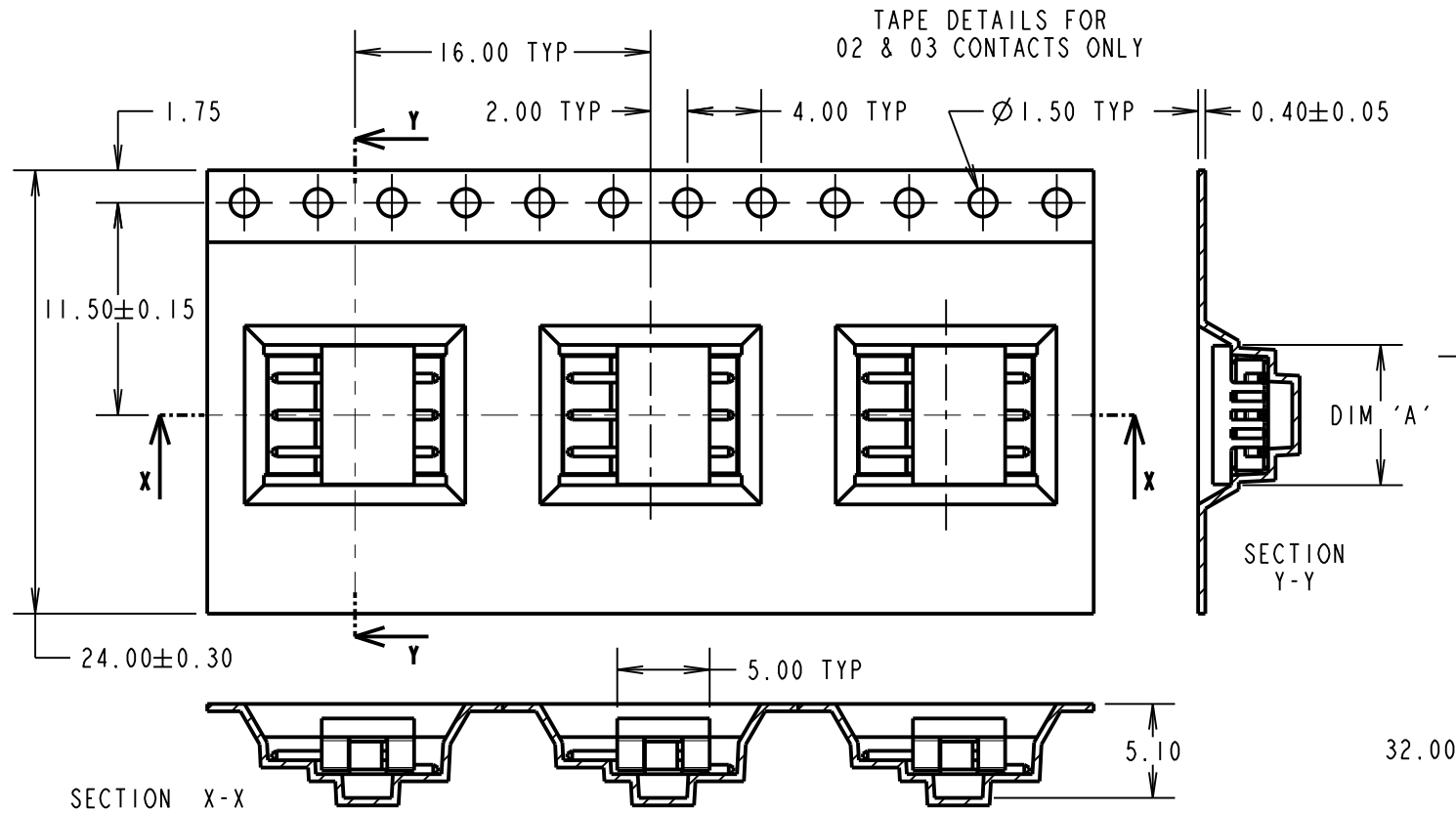
THIRD ANGLE PROJECTION

ALL DIMENSIONS IN mm

Active products:

- M22-5330205R
- M22-5330305R
- M22-5330505R
- M22-5330605R
- M22-5330805R

OBSOLETE
All other size/finish combinations not listed above



ORDER CODE:
M22-533XX05R
No. OF CONTACTS: 02, 03, 04, 05, 06, 08

PART No.	DIM 'A'
M22-5330205R	7.60
M22-5330305R	7.60
M22-5330405R	8.40
M22-5330505R	10.40
M22-5330605R	12.50
M22-5330805R	16.40

MGP	5	25.06.21	30622
NAME	ISS.	DATE	CN/CO
APPROVED: MGP			
CHECKED: RTP			
DRAWN: S.BENNETT			
CUSTOMER REF.:			
ASSEMBLY DRG:			

HARWIN
www.harwin.com
technical@harwin.com

THIS DRAWING AND ANY INFORMATION OR DESCRIPTIVE MATTER SET OUT HEREON ARE CONFIDENTIAL AND COPYRIGHT PROPERTY OF THE HARWIN GROUP AND MUST NOT BE DISCLOSED, LOANED, COPIED OR USED FOR MANUFACTURING, TENDERING OR FOR ANY OTHER PURPOSE WITHOUT THEIR WRITTEN PERMISSION.

TOLERANCES
X. = ±1mm
X.X = ±0.50mm
X.XX = ±0.20mm
X.XXX = ±0.01mm
ANGLES = ±5°
UNLESS STATED

MATERIAL: SEE ABOVE
FINISH: SEE ABOVE
S/AREA: mm²

TITLE: 2.00mm PITCH SIL HORIZONTAL SMT PIN HEADER ASSEMBLY IN T&R
DRAWING NUMBER: **M22-533XX05R**
SHT 4 OF 4