

## MAX17613CEVKIT# Evaluation Kit

## Evaluates: MAX17613C - 4.5V to 60V, 3A, Reverse-Voltage Protector with Forward Current Limit

### General Description

The MAX17613CEVKIT# evaluation kit (EV kit) is a fully assembled and tested circuit board that demonstrates the MAX17613C 4.5V to 60V, 3A, reverse-voltage protector with forward current limit and reverse current block in a 20-pin TQFN-EP package. The EV kit can be configured to demonstrate three current-limit types (Autoretry, Continuous, Latchoff) and different current-limit thresholds (from 0.15A to 3A). For more details about the IC benefits and features, refer to the MAX17613 IC data sheet.

### Features

- 4.5V to 40V Operating Voltage Range (Remove the TVS Diode to Extend the Operating Voltage Range up to 60V)
- Features a 40V TVS Diode (D1) across the Input and Schottky Diode across the Output Terminals
- Evaluates Three Current-Limit Types and Current-Limit Threshold
- Jumper-Configurable Current Limit
- Jumper-Configurable Current-Limit Type
- Programmable Startup Blanking Time
- Features Fault Indication Signals ( $\overline{FWD}$ ,  $\overline{REV}$ )
- Proven PCB Layout
- Fully Assembled and Tested

**Ordering Information** appears at end of data sheet.

### Quick Start

#### Recommended Equipment

- MAX17613CEVKIT#
- 60V, 5A DC power supply
- 4 Multimeters
- Adjustable load (0A-3.5A)
- USB-A male to USB-B male cable or 5V DC power supply

#### Equipment Setup and Test Procedure

The EV kit is fully assembled and tested. Follow the steps below to verify board operation:

**Caution:** Do not turn on power supply until all connections are completed.

- 1) Verify that all jumpers are in their default positions.
- 2) Connect the USB cable to J1 from a computer or connect a 5V-DC power supply to TP3.
- 3) Verify that LED1 is on.
- 4) Verify the JU6 jumper is installed.
- 5) Set the 60V DC power supply to 5V and connect to IN (J2). Verify that OUT (J3/TP8) is 5V.
- 6) Set the DC power-supply voltage to 24V and connect the adjustable load between OUT and GND terminals and a multimeter in series to measure the current. Gradually increase the load current and verify that the OUT goes down and  $\overline{FWD}$  goes low when the load current increases above 0.3A.
- 7) The jumper JU1 can be configured to change the current limit (see [Table 1](#)). Verify various current-limit operations by repeating step 6.

**CAUTION:** The negative input test should be performed by applying negative input voltage ( $V_{IN}$ ) across input terminals at J2 only when the output capacitors connected at the OUT terminals are fully discharged and 5V BUS at J1 is not supplied.

# MAX17613CEVKIT# Evaluation Kit

Evaluates: MAX17613C - 4.5V to 60V,  
3A, Reverse-Voltage Protector with  
Forward Current Limit

## Detailed Description

The overcurrent threshold is determined by external resistors connected to the SET1 pin and is jumper-configurable through jumper JU1. Using jumper JU4, the EV kit circuit can be configured to evaluate Autoretry, Continuous, and Latchoff current-limit types. LED1 on the EV kit indicates availability of logic power for annunciation signals ( $\overline{\text{FWD}}$  and  $\overline{\text{REV}}$ ) and EN. Device offers a programmable startup blanking time that enables charging the large capacitances on the output during startup and when recovering from a fault condition. Connecting a capacitor from the TSTART pin to GND programs the startup blanking time. The EV kit can be configured to enable or disable the IC operation using Jumper JU5. For more details about the IC benefits and features, refer to the MAX17613 IC data sheet.

The EV kit provides on-board output capacitors to enable a demonstration of the MAX17613C protection features.

## Input Power Supply

The EV kit is powered by a user-supplied 4.5V to 60V power supply connected between input connector (J2) terminals.

## Setting the Current-Limit Threshold

The EV kit features a jumper (JU1) to select the current-limit threshold. Install a jumper as shown in [Table 1](#) to change the current-limit threshold. The current limit can be programmed between 0.15A to 3A. The current limit ( $I_{\text{LIM}}$ ) is programmed by the resistor  $R_{\text{SET1}}$  connected at the SET1 pin. Use the following equation to calculate the current-limit setting resistor:

$$R_{\text{SET1}} = \frac{4500}{I_{\text{LIM}}}$$

where,

$I_{\text{LIM}}$  is the desired current limit in mA and  $R_{\text{SET1}}$  is in k $\Omega$ .  
Do not use  $R_{\text{SET1}}$  smaller than 1.5k $\Omega$ .

## Current-Limit Type Selection

The EV kit features a jumper (JU4) to select different current-limit type responses (see [Table 2](#)) for jumper settings. For more details about each current-limit type, refer to the MAX17613 IC data sheet.

## Enable

Connect a USB-A male connector from the computer to the USB-B female connector, J1, or an external 5V supply to TP3 and GND. This provides 5V to  $V_{\text{BUS}}$  and to the EN pin (JU5 connects  $V_{\text{BUS}}$  to EN by default). Choose the JU5 setting to enable or disable operation of the MAX17613C (see [Table 3](#)). Driving the EN pin High or Low makes the device enable or disable respectively.

**Table 1. Current-Limit Threshold (JU1) Settings**

SHUNT POSITION	CURRENT-LIMIT THRESHOLD
1-2	Adjustable using the resistor pot
3-4*	0.3A
5-6	1.5A
7-8	3A

\*Default Position

**Table 2. Current-Limit Type Selection (JU4)**

SHUNT POSITION	CURRENT-LIMIT TYPE
1-2	Latchoff
2-3	Continuous
Not Installed*	Autoretry

\*Default Position

**Table 3. Enable (JU5) Settings**

SHUNT POSITION	DESCRIPTION	MAX17613C OUTPUT
1-2*	EN Connected to $V_{\text{BUS}}$	ON
Not Installed	EN pin Unconnected	ON
2-3	EN Connected to GND	OFF

\*Default Position

## MAX17613CEVKIT# Evaluation Kit

## Evaluates: MAX17613C - 4.5V to 60V, 3A, Reverse-Voltage Protector with Forward Current Limit

### Startup Blanking Time Programming (TSTART)

Connecting a capacitor from the TSTART pin to GND programs the startup blanking time. The below equation ensures proper value of  $C_{TSTART}$  when connected at the TSTART pin for successful startup of the board especially when OUT is connected to a large capacitance.

$$C_{TSTART} \geq \frac{3.33 \times C_{OUT(MAX)} \times V_{IN(MAX)}}{I_{LIM}}$$

The startup time ( $t_{TSTART}$ ) is related to the startup capacitor by the following equation:

$$t_{TSTART} = 300 \times C_{TSTART}$$

where,

$C_{TSTART}$  = TSTART pin capacitance in nF,

$C_{OUT(MAX)}$  = Maximum output capacitance in  $\mu$ F,

$V_{IN(MAX)}$  = Maximum input voltage in V,

$I_{LIM}$  = Programmed current limit in mA.

$t_{TSTART}$  = Startup blanking-time in  $\mu$ s.

### Output-Load Capacitor

Use JU6 to connect the OUT pins to the OUT test point (TP8) and output connector J3 (see [Table 4](#)). Use jumper JU7 to connect output to 470 $\mu$ F capacitor (see [Table 5](#)).

**Table 4. Output Jumper (JU6) Settings**

SHUNT POSITION	DESCRIPTION
Installed*	OUT is connected to TP8 and J3
Not Installed	OUT is not connected TP8 and J3

\*Default Position

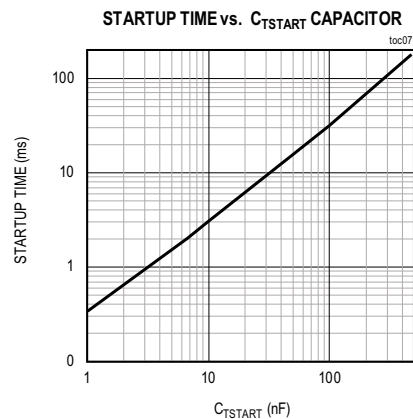
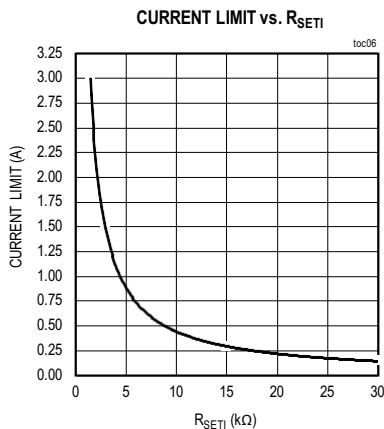
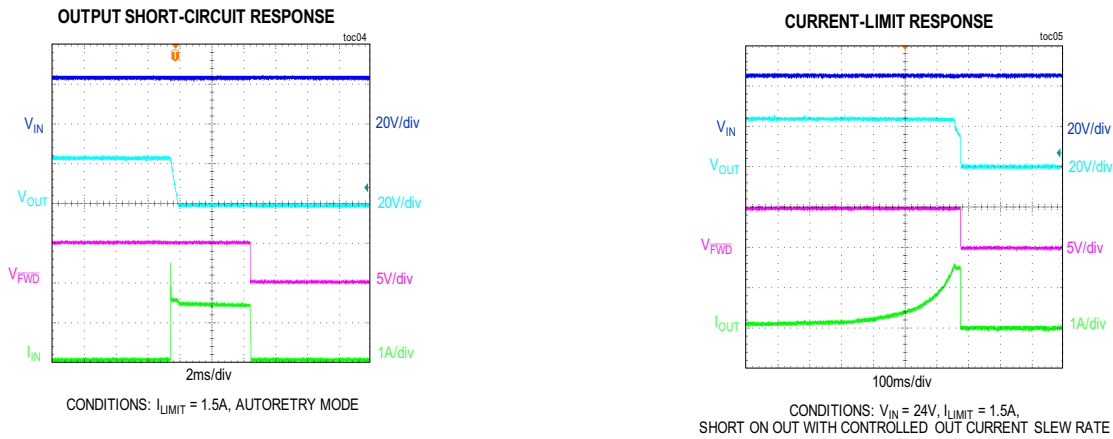
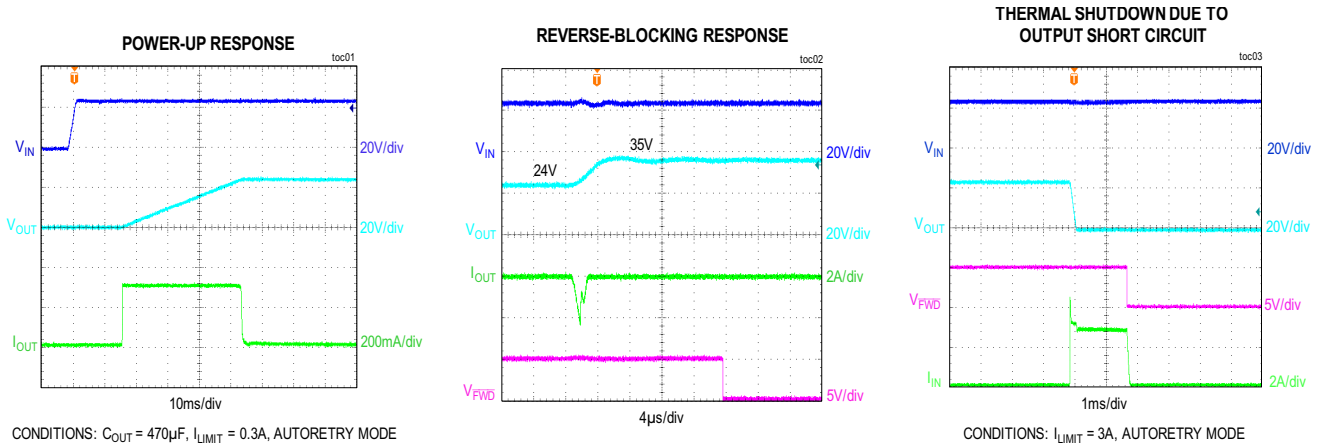
**Table 5. Output Load Capacitor (JU7) Settings**

SHUNT POSITION	DESCRIPTION
Installed	OUT is connected to C4 and C7
Not Installed*	OUT is not connected to C4 and C7

\*Default Position

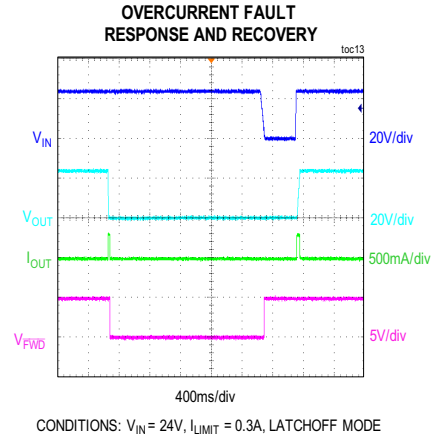
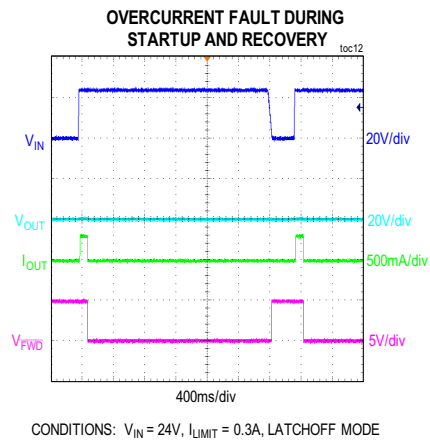
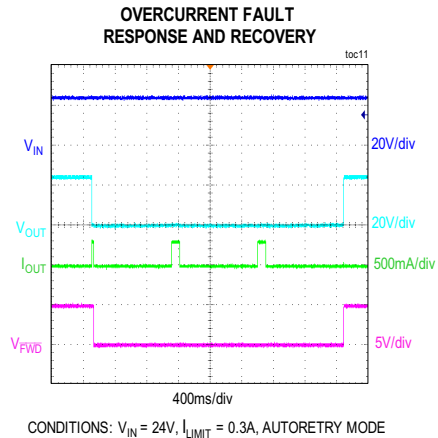
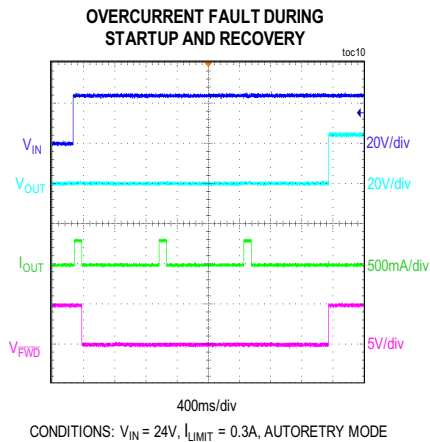
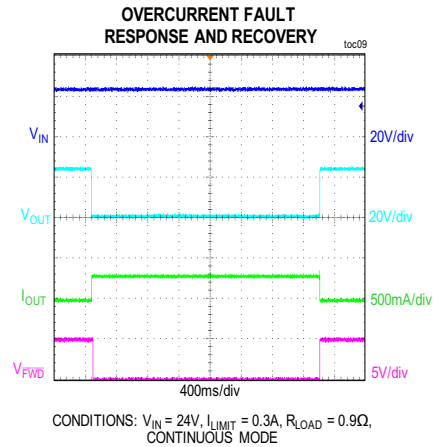
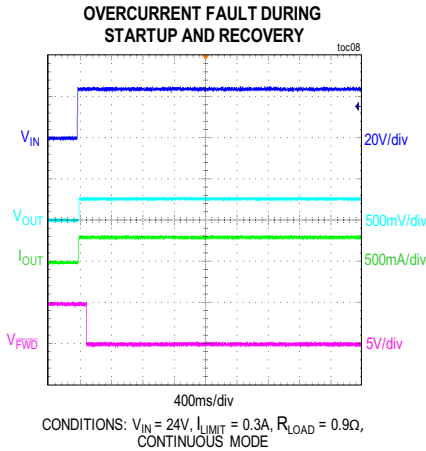
### MAX17613C EV Kit Performance Report

( $C_{IN} = 0.47\mu\text{F}$ ,  $C_{OUT} = 4.7\mu\text{F}$ ,  $V_{IN} = 24\text{V}$ ,  $T_A = +25^\circ\text{C}$ , Autoretry mode unless otherwise noted.)



**MAX17613C EV Kit Performance Report (continued)**

( $C_{IN} = 0.47\mu F$ ,  $C_{OUT} = 4.7\mu F$ ,  $V_{IN} = 24V$ ,  $T_A = +25^\circ C$ , Autoretry mode unless otherwise noted.)



MAX17613CEVKIT#  
Evaluation Kit

Evaluates: MAX17613C - 4.5V to 60V,  
3A, Reverse-Voltage Protector with  
Forward Current Limit

## Component Suppliers

SUPPLIER	WEBSITE
Bourns, Inc	<a href="http://www.bourns.com">www.bourns.com</a>
Murata Americas	<a href="http://www.murata.com">www.murata.com</a>
Panasonic Corp.	<a href="http://www.panasonic.com">www.panasonic.com</a>
Little fuse	<a href="http://www.littelfuse.com">www.littelfuse.com</a>
TE connectivity	<a href="http://www.te.com">www.te.com</a>
SULLINS	<a href="http://www.sullinscorp.com">www.sullinscorp.com</a>
LUMEX	<a href="http://www.lumex.com">www.lumex.com</a>
KEYSTONE	<a href="http://www.keyelco.com">www.keyelco.com</a>
Amphenol	<a href="http://www.amphenol.com">www.amphenol.com</a>
DIODES INCORPORATED	<a href="http://www.diodes.com">www.diodes.com</a>

**Note:** Indicate that you are using the MAX17613C when contacting these component suppliers.

## Ordering Information

PART	TYPE
MAX17613CEVKIT#	EV Kit

MAX17613CEVKIT#  
Evaluation Kit

Evaluates: MAX17613C - 4.5V to 60V,  
3A, Reverse-Voltage Protector with  
Forward Current Limit

MAX17613CEVKIT# EV Kit Bill of Materials

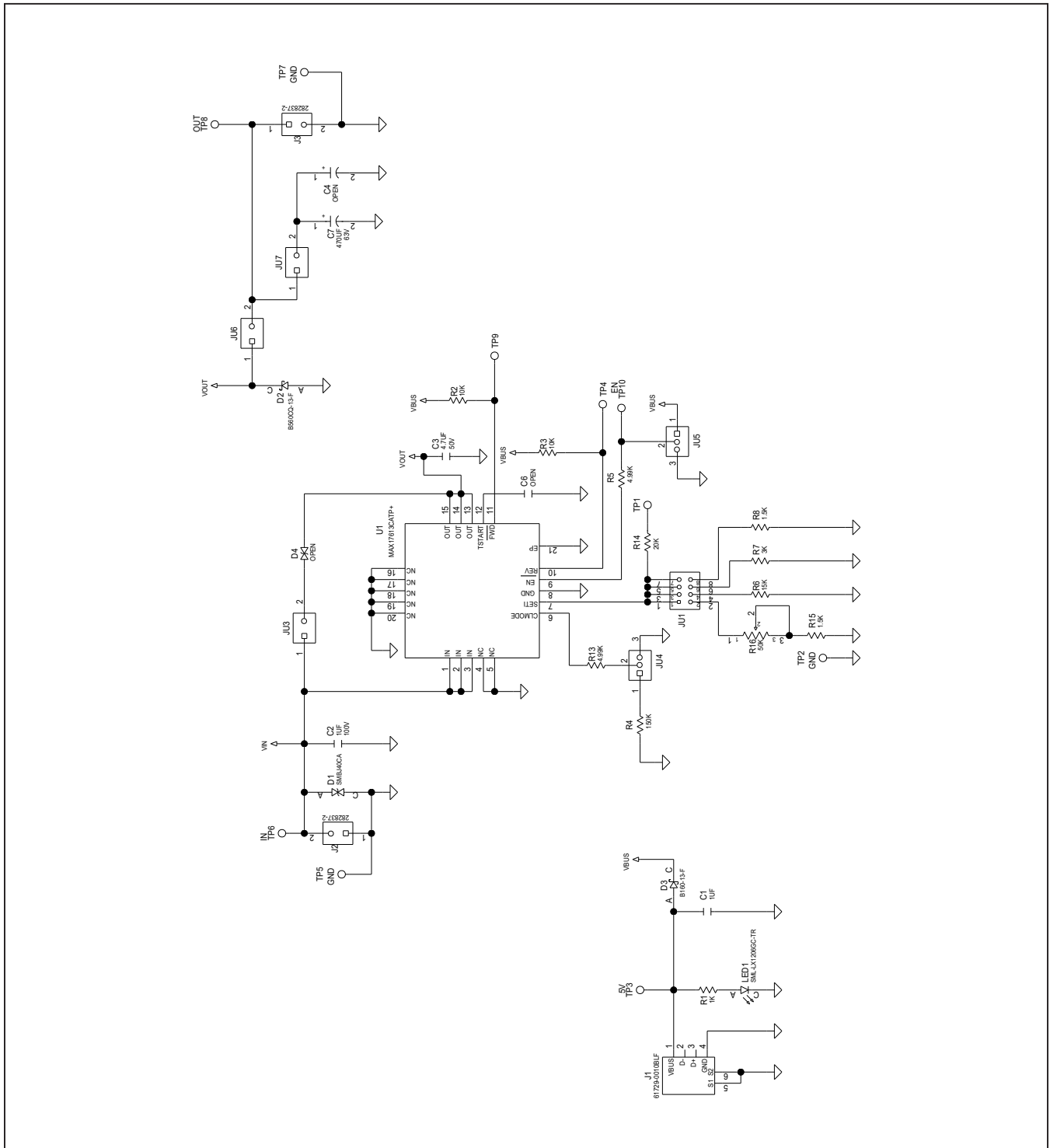
S.No	Designator	Description	Quantity	Manufacturer Part Number
1	C1	1µF, SMT Capacitor-X7R/25V (0603)	1	Murata GRM188R71E105KA12
2	C2	1µF, SMT Capacitor-X7R/100V (1206)	1	Murata GRM31CR72A105KA01
3	C3	4.7µF, SMT Capacitor-X7R/50V (1206)	1	Murata GRJ31CR71H475KE11L
4	C7	470µF, PTH Aluminum Capacitor-63V	1	Panasonic EEUFJR1J471B
5	D1	40V,600W, TVS Diode (DO-214AA)	1	Littlefuse SMBJ40CA
6	D2	60V, 5A, Diode (DO-214AB)	1	DIODES INCORPORATED B560CQ-13-F
7	D3	Power Schottky Diode, 60V, 1A (SMA)	1	DIODES INCORPORATED B160-13-f
8	LED1	2.2V, 20mA, LED (1206)	1	Lumex SML-LX1206GC-TR
9	R1	1kΩ, SMT Resistor 1% 100PPM (0805)	1	
10	R2, R3	10kΩ, SMT Resistor 1% 100PPM (0402)	2	
11	R4	150kΩ, SMT Resistor 1% 100PPM (0402)	1	
12	R5, R13	4.99kΩ, SMT Resistor 1% 100PPM (0402)	2	
13	R6	15kΩ, SMT Resistor 1% 100PPM (0402)	1	
14	R7	3kΩ, SMT Resistor 1% 100PPM (0402)	1	
15	R8	1.5kΩ, SMT Resistor 1% 100PPM (0402)	1	
16	R14	20kΩ, SMT Resistor 1% 100PPM (0402)	1	
17	R15	1.5kΩ, SMT Resistor 1% 100PPM (0402)	1	
18	R16	50kΩ, 0.5W, Trimmer Potentiometers 10%, 100PPM	1	BOURNS 3296W-503LF-ND
19	U1	4.5V to 60V, 3A, Reverse-Voltage protector with Forward Current-Limit	1	MAXIM MAX17613CATP+T
20	TP1, TP2, TP4, TP5, TP7, TP9	Black Test Point	6	KEYSTONE 5001
21	TP3, TP6, TP8	Red Test Point	3	KEYSTONE 5000
22	SU1, SU3-SU7	Shunt Connector, Black Closed Top	6	SULLINS STC02SYAN
23	J1	USB B connector	1	Amphenol 61729-0010BLF
24	J2, J3	2-Pin Green PC Terminal Block	2	TE Connectivity 282837-2
25	JU1	2x4 Dual-Row Header	1	SULLINS PBC04DAAN
26	JU3, JU6, JU7	2-Pin Single-Row Header	3	SULLINS PEC02SAAN
27	JU4, JU5	3-Pin Single-Row Header	2	SULLINS PEC03SAAN
28	C6	OPEN, SMT Capacitor (0603)	0	
29	C4	OPEN, Capacitor, 470µF, 12.5mm Dia (PTH)	0	
30	D4	OPEN, 40V,600W, TVS Diode (DO-214AA)	0	

Default Jumper Table	
Jumper	Shunt Position
JU1	3-4 short
JU3	Open
JU4	Open
JU5	1-2 short
JU6	Short
JU7	Open

MAX17613CEVKIT#  
Evaluation Kit

Evaluates: MAX17613C - 4.5V to 60V,  
3A, Reverse-Voltage Protector with  
Forward Current Limit

MAX17613CEVKIT# EV Kit Schematic

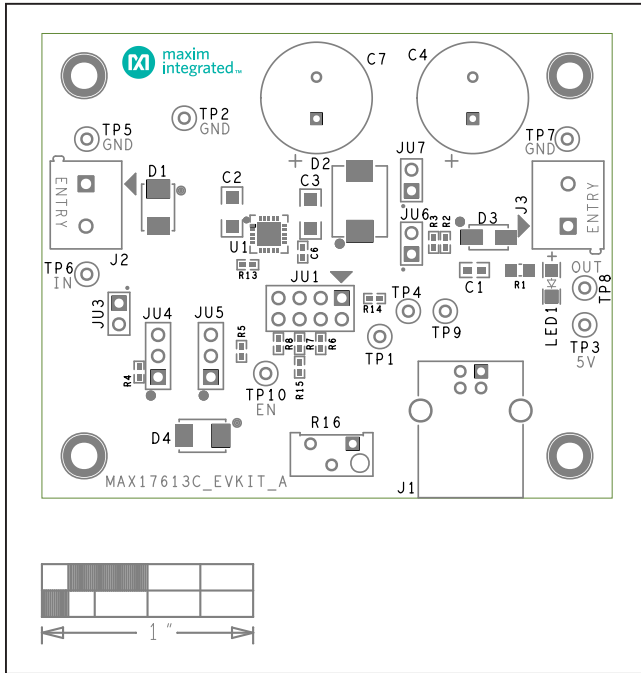




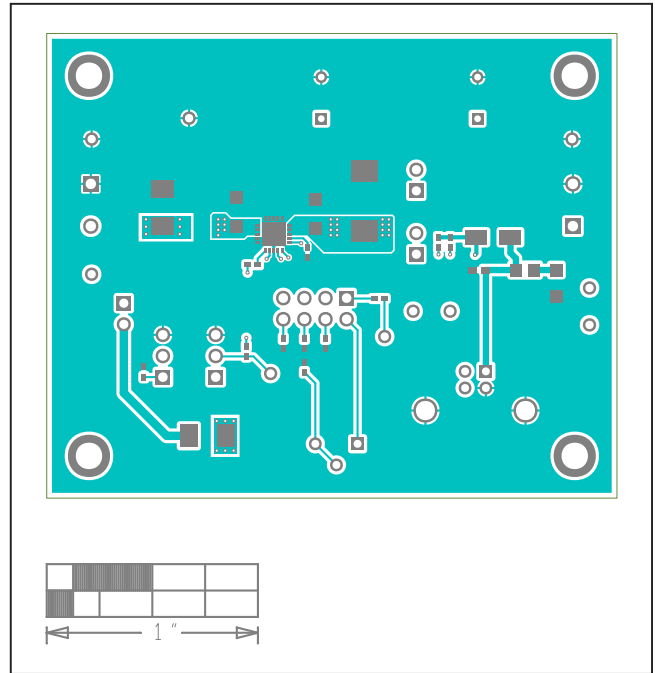
# MAX17613CEVKIT# Evaluation Kit

Evaluates: MAX17613C - 4.5V to 60V,  
3A, Reverse-Voltage Protector with  
Forward Current Limit

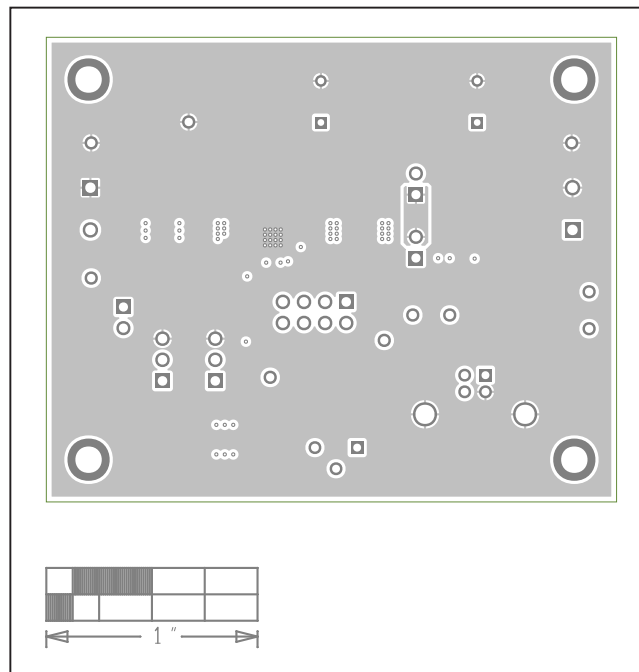
## MAX17613CEVKIT# EV Kit PCB Layout



MAX17613CEVKIT# EV Kit—Top Silkscreen



MAX17613CEVKIT# EV Kit—Top Layer

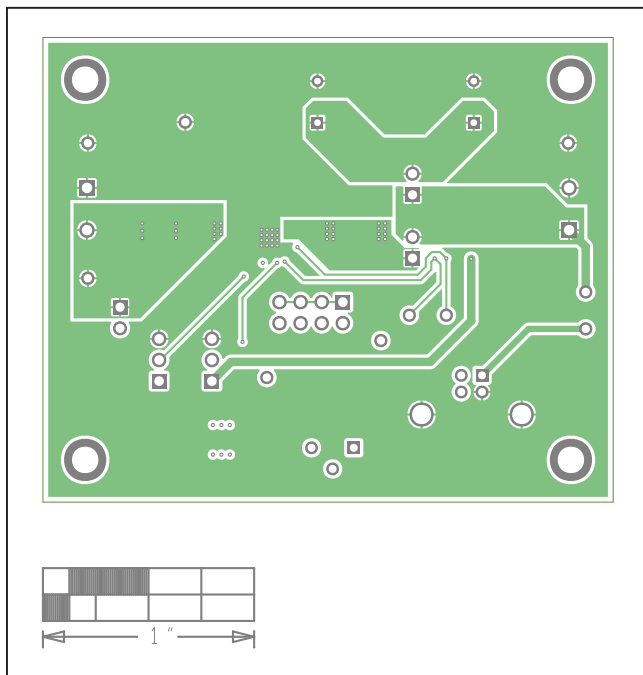


MAX17613CEVKIT# EV Kit—Layer 2

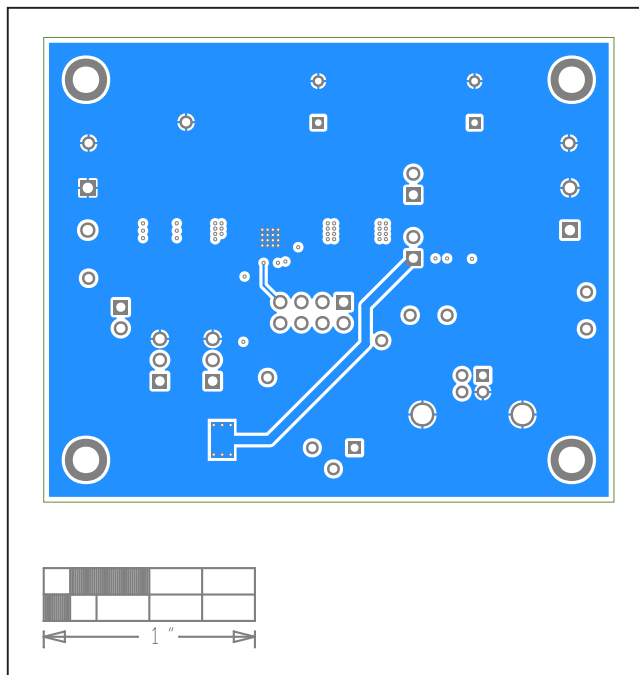
MAX17613CEVKIT#  
Evaluation Kit

Evaluates: MAX17613C - 4.5V to 60V,  
3A, Reverse-Voltage Protector with  
Forward Current Limit

**MAX17613CEVKIT# EV Kit PCB Layout (continued)**



MAX17613CEVKIT# EV Kit—Layer 3



MAX17613CEVKIT# EV Kit—Bottom Layer

MAX17613CEVKIT#  
Evaluation Kit

Evaluates: MAX17613C - 4.5V to 60V,  
3A, Reverse-Voltage Protector with  
Forward Current Limit

## Revision History

REVISION NUMBER	REVISION DATE	DESCRIPTION	PAGES CHANGED
0	4/19	Initial release	—

For pricing, delivery, and ordering information, please visit Maxim Integrated's online storefront at <https://www.maximintegrated.com/en/storefront/storefront.html>.

*Maxim Integrated cannot assume responsibility for use of any circuitry other than circuitry entirely embodied in a Maxim Integrated product. No circuit patent licenses are implied. Maxim Integrated reserves the right to change the circuitry and specifications without notice at any time.*